

(19) World Intellectual Property
Organization
International Bureau



(43) International Publication Date
31 March 2005 (31.03.2005)

PCT

(10) International Publication Number
WO 2005/029367 A1

(51) International Patent Classification⁷: **G06F 17/30**

(21) International Application Number:
PCT/US2004/029618

(22) International Filing Date:
10 September 2004 (10.09.2004)

(25) Filing Language: English

(26) Publication Language: English

(30) Priority Data:
10/661,741 12 September 2003 (12.09.2003) US

(71) Applicant (for all designated States except US):
GOOGLE INC. [US/US]; 1600 Amphitheatre Park-
way, Mountain View, California 94043 (US).

(72) Inventors; and

(75) Inventors/Applicants (for US only): **TONG, Simon**

[GB/US]; 541 Del Medio Avenue, #319, Mountain View,
California 94040 (US). **PEARSON, Mark** [US/US];
Room 411, International House, 2299 Piedmont Avenue,
Berkeley, California 94720 (US).

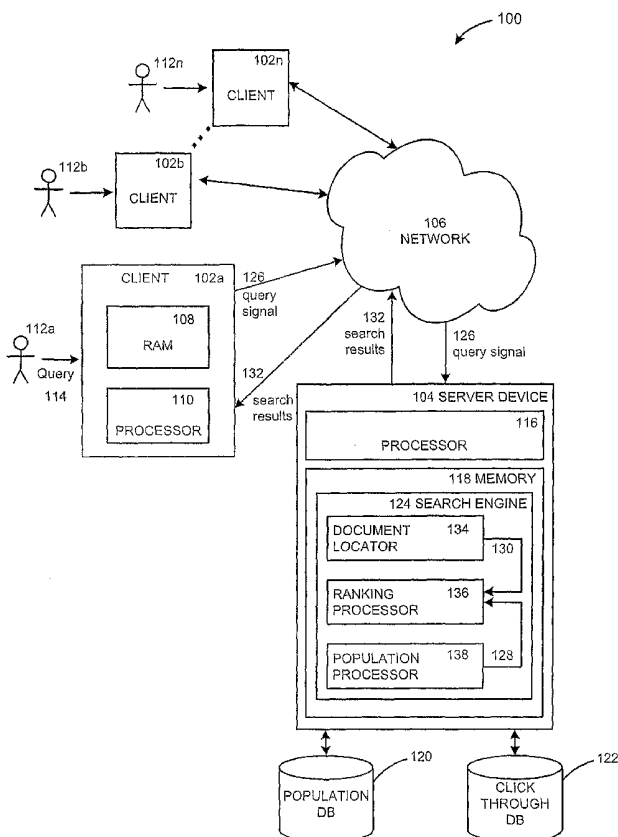
(74) Agents: **GARDNER, J., Steven** et al.; Kilpatrick Stock-
ton LLP, 1001 West Fourth Street, Winston-Salem, North
Carolina 27101-2400 (US).

(81) Designated States (unless otherwise indicated, for every
kind of national protection available): AE, AG, AL, AM,
AT, AU, AZ, BA, BB, BG, BR, BW, BY, BZ, CA, CH, CN,
CO, CR, CU, CZ, DE, DK, DM, DZ, EC, EE, EG, ES, FI,
GB, GD, GE, GH, GM, HR, HU, ID, IL, IN, IS, JP, KE,
KG, KP, KR, KZ, LC, LK, LR, LS, LT, LU, LV, MA, MD,
MG, MK, MN, MW, MX, MZ, NA, NI, NO, NZ, OM, PG,
PH, PL, PT, RO, RU, SC, SD, SE, SG, SK, SL, SY, TJ, TM,
TN, TR, TT, TZ, UA, UG, US, UZ, VC, VN, YU, ZA, ZM,
ZW.

(84) Designated States (unless otherwise indicated, for every
kind of regional protection available): ARIPO (BW, GH,

[Continued on next page]

(54) Title: METHODS AND SYSTEMS FOR IMPROVING A SEARCH RANKING USING POPULATION INFORMATION



(57) Abstract: Systems and methods that improve search rankings for a search query by using data associated with queries related to the search query are described. In one aspect, a search query is received, a population associated with the search query is determined, an article (such as a webpage) associated with the search query is determined, and a ranking score for the article based at least in part on data associated with the population is determined. Algorithms and types of data associated with a population useful in carrying out such systems and methods are described.



GM, KE, LS, MW, MZ, NA, SD, SL, SZ, TZ, UG, ZM, ZW), Eurasian (AM, AZ, BY, KG, KZ, MD, RU, TJ, TM), European (AT, BE, BG, CH, CY, CZ, DE, DK, EE, ES, FI, FR, GB, GR, HU, IE, IT, LU, MC, NL, PL, PT, RO, SE, SI, SK, TR), OAPI (BF, BJ, CF, CG, CI, CM, GA, GN, GQ, GW, ML, MR, NE, SN, TD, TG).

Published:

— *with international search report*

For two-letter codes and other abbreviations, refer to the "Guidance Notes on Codes and Abbreviations" appearing at the beginning of each regular issue of the PCT Gazette.

5 **METHODS AND SYSTEMS FOR IMPROVING A SEARCH RANKING USING
POPULATION INFORMATION**

FIELD OF THE INVENTION

10 The invention generally relates to search engines. More particularly, the invention relates to methods and systems for improving a search ranking using population information.

BACKGROUND OF THE INVENTION

15 Conventional search engines operating in a networked computer environment such as the World Wide Web or in an individual computer can provide search results in response to entry of a user's search query. In many instances, the search results are ranked in accordance with the search engine's scoring or ranking system or method. For example, conventional search engines score or rank documents of a search result for a particular query by the number of times a
20 keyword or particular word or phrase appears in each document in the search results. Documents include, for example, web pages of various formats, such as HTML, XML, XHTML; Portable Document Format (PDF) files; and word processor and application program document files. Other search engines base scoring or ranking results on more than the content of the document. For example, one known method, described in an article entitled "The Anatomy of a Large-Scale
25 Hypertextual Search Engine," by Sergey Brin and Lawrence Page, assigns a degree of importance to a document, such as a web page, based on the link structure of the web page. Other conventional methods involve selling a higher score or rank in search results for a particular query to third parties that want to attract users or customers to their websites.

In some instances, a user in a particular location may enter a search query in a search engine to obtain search results relevant to the user. For example, a user in Japan may enter a search query to obtain search results that include Japanese language websites. In response to such queries, conventional search engines can return unreliable search results since there is relatively little data to rank or score search results according to the user's location that are relevant or useful to the user for the search query.

Conventional search engines can determine location information associated with a user from the type of web browser application used to access the search engine. For example, when a user downloads a web browser application from the Internet, the user may have the option to download a particular version of the application depending upon the user's preferred language, e.g. Japanese or French versions. When a user uses the French version of a web browser application to access a search engine via the Internet, the search engine can often determine that the user is likely located in France merely by detecting use of the French version of the web browser application.

Other conventional search engines obtain location information by the country domain suffix a particular user used in a search query. For example, a Japanese user requesting the Japanese version of a search engine may input the web address for the search engine with the country domain suffix of "co.jp" instead of the domain name suffix ".com." Based on such input, a search engine could determine that the user is likely located in Japan.

If a search engine returns more than one search result in response to a search query, the search results may be displayed as a list of links to the documents associated with the search results. A user may browse and visit a website associated with one or more of the search results to evaluate whether the website is relevant to the user's search query. For example, a user may manipulate a mouse or another input device and "click" on a link to a particular search result to

view a website associated with the search result. In many instances, the user will browse and visit several websites provided in the search result, clicking on links associated with each of the several websites to access various websites associated with the search results before locating useful or relevant information to address the user's search query.

- 5 Clicking on multiple links to multiple websites associated with a single set of search results can be time consuming. It is desirable to improve the ranking algorithm used by search engines and to therefore provide users with better search results.

SUMMARY

- 10 Embodiments of the present invention comprise systems and methods that improve search rankings for a search query by using population information associated with the search query are described. One aspect of the present invention comprises receiving a search query, and determining a population associated with the search query. Such populations may be defined and determined in a variety of ways. Another aspect of an embodiment of the present invention
- 15 comprises determining an article (such as a webpage) associated with the search query, and determining a ranking score for the article based at least in part on data associated with the population. A variety of algorithms using population information may be applied in such systems and methods.

20 BRIEF DESCRIPTION OF THE DRAWINGS

 These and other features, aspects, and advantages of the present invention are better understood when the following Detailed Description is read with reference to the accompanying drawings, wherein:

FIG. 1 illustrates a block diagram of a system in accordance with one embodiment of the present invention;

FIG. 2 illustrates a flow diagram of a method in accordance with one embodiment of the present invention; and

5 FIG. 3 illustrates a flow diagram of a subroutine of the method shown in FIG. 2.

DETAILED DESCRIPTION

The present invention comprises methods and systems for improving a search ranking by using population information. Reference will now be made in detail to exemplary
10 embodiments of the invention as illustrated in the text and accompanying drawings. The same reference numbers are used throughout the drawings and the following description to refer to the same or like parts.

Various systems in accordance with the present invention may be constructed. FIG. 1 is a diagram illustrating an exemplary system in which exemplary embodiments of the present
15 invention may operate. The present invention may operate in, and be embodied in, other systems as well.

The system **100** shown in FIG. 1 includes multiple client devices **102a-n**, a server device **104**, and a network **106**. The network **106** shown includes the Internet. In other embodiments, other networks, such as an intranet may be used. Moreover, methods according to
20 the present invention may operate in a single computer. The client devices **102a-n** shown each include a computer-readable medium, such as a random access memory (RAM) **108**, in the embodiment shown coupled to a processor **110**. The processor **110** executes a set of computer-executable program instructions stored in memory **108**. Such processors may include a microprocessor, an ASIC, and state machines. Such processors include, or may be in

communication with, media, for example, computer-readable media, which stores instructions that, when executed by the processor, cause the processor to perform the steps described herein. Embodiments of computer-readable media include, but are not limited to, an electronic, optical, magnetic, or other storage or transmission device capable of providing a processor, such as the processor in communication with a touch-sensitive input device, with computer-readable instructions. Other examples of suitable media include, but are not limited to, a floppy disk, CD-ROM, magnetic disk, memory chip, ROM, RAM, an ASIC, a configured processor, all optical media, all magnetic tape or other magnetic media, or any other medium from which a computer processor can read instructions. Also various other forms of computer-readable media may transmit or carry instructions to a computer, including a router, private or public network, or other transmission device or channel, both wired and wireless. The instructions may comprise code from any computer-programming language, including, for example, C, C++, C#, Visual Basic, Java, and JavaScript.

Client devices **102a-n** may also include a number of external or internal devices such as a mouse, a CD-ROM, a keyboard, a display, or other input or output devices. Examples of client devices **102a-n** are personal computers, digital assistants, personal digital assistants, cellular phones, mobile phones, smart phones, pagers, digital tablets, laptop computers, a processor-based device and similar types of systems and devices. In general, a client device **102a-n** may be any type of processor-based platform connected to a network **106** and that interacts with one or more application programs. The client devices **102a-n** shown include personal computers executing a browser application program such as Internet Explorer™, version 6.0 from Microsoft Corporation; Netscape Navigator™, version 7.1 from Netscape Communications Corporation; and Safari™, version 1.0 from Apple Computer.

Through the client devices **102a-n**, users **112a-n** can communicate over the network **106** with each other and with other systems and devices coupled to the network **106**. Users

112a-n can be located in different locations, countries, or regions. As shown in FIG. 1, a server device 104 is also coupled to the network 106. In the embodiment shown, a user 112a-n can generate a search query 114 at a client device 102a-n to transmit to the server device 104 via the network 106. For example, a user 112a in one country types a textual search query 114 into a query field of a web page displayed on the client device 102a. The client device 102a then transmits an associated search query signal 126 reflecting the search query 114 via the network 106 to the server device 104.

The server device 104 shown includes a server executing a search engine application program such as the Google™ search engine. Similar to the client devices 102a-n, the server device 104 shown includes a processor 116 coupled to a computer readable memory 118. Server device 104, depicted as a single computer system, may be implemented as a network of computer processors. Examples of a server device 104 are servers, mainframe computers, networked computers, a processor-based device and similar types of systems and devices. Client processors 110 and the server processor 116 can be any of a number of well-known computer processors, such as processors from Intel Corporation of Santa Clara, California; and Motorola Corporation of Schaumburg, Illinois.

Memory 118 contains the search engine application program, also known as a search engine 124. The search engine 124 locates relevant information in response to a search query 114 from a user 112a-n.

The server device 104, or related device, has previously performed a search of the network 106 to locate articles, such as web pages, stored at other devices or systems connected to the network 106, and indexed the articles in memory 118 or another data storage device. Articles include, documents, for example, web pages of various formats, such as HTML, XML, XHTML, Portable Document Format (PDF) files, and word processor, database, and application program

document files, audio, video, or any other information of any type whatsoever made available on a network (such as the Internet), a personal computer, or other computing or storage means. The embodiments described herein are described generally in relation to documents, but embodiments may operate on any type of article.

5 The search engine **124** responds to the associated search query signal **126** reflecting the search query **114** by returning a set of relevant information or search results **132** to client device **102a-n** from which the search query **114** originated.

 The search engine **124** shown includes a document locator **134**, a ranking processor **136**, and a population processor **138**. In the embodiment shown, each comprises computer code
10 residing in the memory **118**. The document locator **134** identifies a set of documents that are responsive to the search query **114** from a user **112a**. In the embodiment shown, this is accomplished by accessing an index of documents, indexed in accordance with potential search queries or search terms. The ranking processor **136** ranks or scores the search result **132** including the located set of web pages or documents based upon relevance to a search query **114**
15 and/or any another criteria. The population processor **138** determines or otherwise measures a population signal such as a population signal **128** that reflects or otherwise corresponds to a population associated with a user **112a-n**. Note that other functions and characteristics of the document locator **134**, ranking processor **136**, and population processor **138** are further described below.

20 Server device **104** also provides access to other storage elements, such as a population data storage element, in the example shown a population database **120**, and a selection data storage element, in the example shown, a selection data database **122**. The specific selection database shown is a clickthrough database, but any selection data storage element may be used. Data storage elements may include any one or combination of methods for storing data,

including without limitation, arrays, hashtables, lists, and pairs. Other similar types of data storage devices can be accessed by the server device 104. The population database 120 stores population information associated with users 112a-n inputting search queries. Examples of population information associated with users 112a-n includes information about the locations of
5 users 112a-n, information about the populations with which users 112a-n are associated, and information about groups with which users 112a-n are associated.

Examples of locations of users can include, but are not limited to, a continent, a region, a country, a state, a county, or a city. By way of example, locations of users can be identified by country, such as France, Germany, Japan, and the United States.

10 Examples of populations with which users are associated can include, but are not limited to, a gender, a demographic, an ethnicity, a continent, a region, a country, a state, a county, or a city. By way of example, populations with which users are associated with can be identified by age ranges of the user, such as "under 18 years old," "18-24 years old," "25-34 years old," "35-49 years old," "50-62 years old," and "over 62 years old."

15 Examples of groups with which users are associated, can include, but are not limited to, a gender, a demographic group, an ethnic group, persons with a shared characteristic, persons with a shared interest, and persons grouped by a predetermined selection. By way of example, groups with which users can be associated with can be identified as "all persons interested in collecting ancient shark teeth," and "all persons not interested in collecting ancient shark teeth."

20 Population information can also include self identification-type data or automatic identification-type data. Self identification-type data includes, but is not limited to, user registration data, user preference data, and other user selected data. By way of example, self-identification data is a language preference selection that a user inputs into a browser application program. Automatic identification-type data includes, but is not limited to, the Internet protocol

address of a user's location, default data obtained from a user's browser application program, cookies, and other data collected from a user's application program when the user's application program interacts with a search engine. By way of example, automatic-identification data may comprise the domain of a user's network address on the Internet, or may be information stored in
5 a "cookie" obtained by or accessed by a user's browser application program.

The search engine **124** determines population information or otherwise executes a set of instructions to determine population information associated with users **112a-n**, and stores population-type information in the population database **120**. Alternatively, the population processor **138** determines population information or otherwise executes a set of instructions to
10 determine population information associated with users **112a-n**, and stores population-type information in the population database **120**.

It should be noted that the present invention may comprise systems having different architecture than that which is shown in FIG. 1. For example, in some systems according to the present invention, the population database **120** and processor **138** may not be part of the search
15 engine **124**, and may carry out modification of population data or other operations offline. Also, in other embodiments, the population processor **138** may affect the output of the document locator **134** or other system. The system **100** shown in FIG. 1 is merely exemplary, and is used to explain the exemplary methods shown in FIGS. 2-3.

In the embodiment shown, the population database **120** contains data gathered and
20 stored prior to carrying out the example method of the present invention as shown in FIGS. 2-3. Still referring to FIG. 1, the population processor **138** shown records population information associated with users **112a-n** by obtaining and analyzing the location of a user inputting a search query and selecting search results for the search query. For example, when a user **112a** in Japan types in a first search query such as "boating," the population processor **138** determines that the

user **112a** is transmitting the search query from an Internet protocol address located in Japan, and is also using Japanese language preferences for the browser application program. Furthermore, when the user **112a** selects particular search results returned by the search engine in response to the search query, the population processor **138** determines that the user **112a** selects particular documents in the Japanese language. Thus, when a user **112a** in Japan inputs the query “boating,” search results relevant to the user **112a** in Japan may be returned such as “boating.co.jp.” Other types of population information can be determined by the invention and stored by the population database **120**.

By way of another example, the population database **120** can store information that a user is associated with sub-populations of a population. For example, the population processor **138** determines that a user **112a** in Europe, a region in the world, is from Luxembourg, a country in Europe. The population database **120** can also store information that another user in Europe is from France, another country in Europe. Thus, while each user is associated with the population of “Europe,” each user is associated with a respective sub-population, “Luxembourg” and “France.” Populations and sub-populations can include, but are not limited to, continents, regions, countries, states, counties, cities, genders, demographic groups, ethnic groups, languages spoken, universal resource locators, internet protocol addresses, domain names, internet service providers, groups, persons with shared characteristics, persons with shared interests, and persons grouped by a predetermined selection. Various levels of sub-populations can exist for a population. For example, “Parisians” are a sub-population to “France” which is a sub-population to “Europe” which is a sub-population to the “World.” Subpopulation information can be useful if there is an insufficient number of user clicks from users from a particular location or population such as France. However, since France is a sub-population of “Europe,” click information corresponding to users in “Europe” could be used to augment the click information for a query from the user in France. Generally, if click information for a sub-population is sparse

or does not exist, information from a higher population level can be used to augment the click information.

In determining population and sub-population information, the population processor 138 can also determine a weight for each type of information. For example, the population processor 138 can determine to weight that a user is from a particular region less than the weight for information that a user is from a particular country so that improved search results for subsequent search queries can be obtained from region and country information. Thus, information that a user is from a particular region (Europe) can be weighted less than information that a user is from a particular country (France). Other types of weighting or similar, population-type data can be defined by the invention and stored by the stored by a population database 120.

The population database 120 shown includes a list of user locations for a particular query. For example, for the search query "boating," population information such as the determined location of users who input the query "boating" are stored and associated with the search query "boating." The user's locations can be "France," "Japan," and the "United States." These locations are used for example purposes. In other embodiments, the number of locations can be greater or fewer, or other countries, locations, populations, or sub-populations can be used.

An example of information stored in a population database implemented by various embodiments of the invention is as follows:

Query	Locations
Q1	Japan, France, United States
Q2	Europe, Asia, North America

In the table shown above, the first column lists unique queries and the second column lists corresponding locations of users. Each query represents a search query input by a user. The corresponding locations of users represents the determined location of users who input the respective query. Thus, in for query “Q1” shown above, determined locations of users who previously input the query “Q1” includes “Japan,” “France,” and the “United States.” When the table is implemented by the invention, the search engine 124 can call upon the determined locations of users in the “Location” column for a particular query such as “Q1.” When a new query is input by a user, the new query is inserted into the “Query” column. Likewise, when a location of a user is determined for the new query, the new location is inserted into the second column titled “Location.”

The clickthrough database 122 shown stores data associated with users’ selection of a search result 132 from a search engine 124, such as from a list of documents located in response to a search query 114. For example, a user 112a enters an input at a client device 102a-n, such as manipulating a mouse or another input device to click on one or more URLs associated with web pages or documents of a search result 132. A user “click” is generated by the user’s selection of a document located in the search result 132. This “click” on a document is stored in the clickthrough database 122 as a selection associated with the document’s presence in a search result returned for a particular search query. Many other such selection-type data, associated with users’ selections of documents in search results, are stored there as well.

User clicks are referred to as “clickthrough” data. In the embodiment shown, the search engine 124 measures and stores the clickthrough data as well as other data related to each of the documents located in the search result 132.

Clickthrough data is generally an indicator of quality in a search result. Quality signals or clickthrough data can include, but is not limited to, whether a particular URL or

document is clicked by a particular user; how often a URL, document, or web page is clicked by one or more users; and how often a particular user clicks on specific documents or web pages. Other types of quality signals similar to clickthrough data, such as user inputs or observational type data, can be stored by a clickthrough database 122 or similar data storage devices.

5 Other data related to documents located in a search result 132 that can be stored in a clickthrough database 122 or other data storage device can include, but is not limited to, how often a particular URL, document, or web page is shown in response to a search query 114; how many times a particular search query 114 is asked by users 112a-n from a particular location; how many times a particular search query 114 is asked by users 112a-n from a particular
10 population; how many times a particular document is selected by users 112a-n from a particular location, how many times a particular document is selected by users 112a-n from a particular population; how many times a particular document is by selected by users 112a-n for a particular search query 114; the age or time a particular document has been posted on a network 106, and identity of a source of a particular document on a network 106.

15 Population information from the population database 120 and selection data from the selection database (shown as a clickthrough database 122) can be processed by the population processor 138 and stored for subsequent use. For example, the population processor 138 retrieves clickthrough data for a particular search query. The clickthrough data for the particular search query is apportioned based on users' locations. The search engine 124 calls to the
20 population database 120 for location information for all users entering a particular search query and selecting documents for the search result for the query. If the population processor 138 determines that users from three locations, Japan, France, and the United States, submitted selection data for a particular query 114, a respective designation for each set of users from each location can be defined by the population processor 138. Thus, users from Japan can be
25 designated as "J," users from France can be designated as "F," and users from the United States

can be designated as "US." The population processor 138 then apportions the number of clicks collected by the clickthrough database 122 for the particular set of documents to each respective designation based on user location.

One example of information stored in a population database implemented by an
 5 embodiment of the invention is as follows:

Query	Document	Total Number of All Clicks	Japan	France	United States
Q	D ₁	101	1	20	80
Q	D ₂	207	2	5	200
...
Q	D _i	#(Q,D _i ,A)	#(Q,D _i ,J)	#(Q,D _i ,F)	#(Q,D _i ,U)
...
Q	D _N	#(Q,D _N ,A)	#(Q,D _N ,J)	#(Q,D _N ,F)	#(Q,D _N ,U)
Q	D _{total}	1500	100	300	1100

In the example provided above for the population database 120 shown, for the search query "Q," the total number of user clicks on document "D₁" was "101." The total number of user clicks on document "D₁" by users located in Japan was "1," the total number of user clicks
 10 on document "D₁" by users located in France was "20," and the total number of user clicks on document "D₁" by users located in the United States was "80."

In the embodiment shown in FIG. 1, the server 104 is in communication with the population database 120 and the clickthrough database 122. The server 104 carries out a process by which the data in the two databases 120, 122 are used to improve the search results provided
 15 in response to a search query 114 from a user 112a.

Various methods in accordance with the present invention may be carried out. One exemplary method according to the present invention comprises receiving a search query, determining a population associated with the search query, determining an article (such as a web page) associated with the search query, and determining a ranking score for the article based at least in part on data associated with the population. This population information is thus used to impact the ranking score for the article. Preferably, this population information indicates behavior of the population determined (e.g., a group or sub-group) relative to the search query and/or the article. For example, this information may indicate the preferred articles selected by others in the same, similar, or related population in relation to the same, similar, or related query.

A ranking score for a second article, a third article, a fourth article, etc., associated with the search query may also be determined based at least in part on information associated with the population. These articles may then be ranked against each other based on the ranking score and presented in a ranked order to the person submitting the search query. Preferably, this results in a ranking that provides the most relevant articles to the user first.

The population associated with the query can be one or more of a variety of populations. Examples include, but are not limited to demographic data such as age, age range, sex, race, primary language, secondary language, location, income, income range, a continent, a region, a country, a state, a county, a city, a gender, an ethnic group, a group, persons with a shared characteristic, persons with a shared interest, persons grouped by a predetermined selection, and internet service provider data (or the likely or possible data for any of these). In other words, the population may be any group determined by any characteristics selected.

The population associated with the search query may be determined in one or more of a variety of ways. For example, demographic data associated with a sender of the search query may be determined in order to determine the population of interest, and this data can be any one

or more of the above-mentioned populations or others. For example, a likely geographic location for the sender of the search query may be determined by identifying the Internet Protocol address from which the search query was sent, an address input by the sender to access a search engine, or demographic data input by the sender. The population associated with the search query may
5 also be determined in other ways, such as determining demographic data associated with the search query. This may be accomplished by, for example, determining the language of the search query or determining data associated with previous senders of the search query.

As can be seen, determining a population associated with the search query can comprise determining self-identification data, automatic-identification data, or other data or
10 information associated with a user transmitting the search query, such as user registration data, user preference data, and user selected data. For example, in registering for membership or access to a web site, a user may input registration information. The user may express preferences during such a registration process (e.g., preferred language) or may express preferences in other ways (such as in selection of web pages or domain use). Automatic-
15 identification data may comprise, for example, an IP address, a domain, default data obtained an application associated with the user, or other automatically-procured or automatically-provided information. There can be, of course, some overlap between self-identification data and automatic-identification data.

Data associated with the population determined may itself be determined in one or
20 more of a variety of ways. For example, a selection score for the article in a context of the population may be determined. As an illustration, it may be determined that a certain number of members of the population associated with the search query at hand had previously clicked on the article at issue. This selection score may indicate the relative interest of members of the population in the article at issue.

Again, there are a wide variety of data that can comprise the population information. Other examples include a number of members of the population, a number of members of the population that selected a result returned for the search query previously, a number of members of the population that input the search query, a number of members of the population to which
5 search results for the search query were shown, a total selection score, and a total number of members of the population that selected the article. There are many other examples.

In some instances, more than one populations associated with the search query may be determined and used in order to provide improved search results. In one embodiment, for example, a second population associated with the search query is determined, determining the
10 ranking score for the article is further based at least in part on data associated with the second population.

These and other aspects of embodiments of the present invention are described further herein. These exemplary aspects of embodiments of the present invention may be repeated or iterated to improve search results. Moreover, these and other steps taken in methods according
15 to the present invention may be stored in the form of program code in a computer-readable medium, such as memory associated with a processor, a disk, or other computer-readable medium.

FIGS. 2-3 illustrate an exemplary method **200** in accordance with the present invention in detail. This exemplary method is provided by way of example, as there are a variety
20 of ways to carry out methods according to the present invention. The method **200** shown in FIG. 2 can be executed or otherwise performed by any of various systems. The method **200** is described below as carried out by the system **100** shown in FIG. 1 by way of example, and various elements of the system **100** are referenced in explaining the example method of FIGS. 2-

3. The method **200** shown provides an improvement of a search ranking using population information.

Each block shown in FIGs. 2-3 represents one or more steps carried out in the exemplary method **200**. Referring to FIG. 2, in block **202**, the example method **200** begins.

5 Block **202** is followed by block **204**, in which a population database **120** is provided. This may be accomplished by, for example, constructing such a database or establishing communication with such a database. As described with reference to FIG. 1, the population database **120** stores population-type information for documents selected in a search result for a search query **114** and other search queries.

10 Block **204** is followed by block **206**, in which a selection database, in this case a clickthrough database **122**, is provided. This may be accomplished by, for example, constructing such a database or establishing communication with such a database. As described with reference to FIG. 1, the clickthrough database **122** stores data associated with users' clicks or inputs to a search result **132** provided by the search engine **124**, such as a list of documents, such
15 as web pages, provided in response to a search query **114** from a user **112a**.

Block **206** is followed by block **208**, in which a search query, in the form of a search query signal is received by the server. In the embodiment shown, a user **112a** generates a search query **114** at a client device **102a**. The client device **102a** transmits an associated search query signal **126** reflecting the search query **114** to the server device **104** via a network **106**. The
20 search engine **124** receives the search query signal **126** and processes the search query **114**. For example, if the user **112a** types a search query "boating" into the search or query field of a search page on a browser application program, the client **102a** transmits a search query signal **126** that includes the text "boating" or some other representation or indication of "boating." The

search engine 124 receives the signal 126 and determines that “boating” is the desired search query 114.

Block 208 is followed by block 210, in which article data, in the case shown, document data, is determined and received. In this block 210 in the embodiment shown, the search engine 124 conducts a search for relevant documents in a search database (not shown) or memory 118 that have previously been indexed from the network 106. The search engine 124 receives document data from the search database or memory 118 in response to the search query signal 126 reflecting the search query 114 from the user 112a. The document data is also referred to as the initial search result for the search query 114. Document data can include, but is not limited to, a universal resource locator (URL) that provides a link to a document, web page, or to a location from which a document or web page can be retrieved or otherwise accessed by the user 112a via the network 106. Note that document data is sometimes referred to as a “document” throughout the text of the specification. Alternatively, the document locator 134 obtains or otherwise receives document data in response to a search query signal 126 reflecting a search query 114.

For example, in block 210 shown, the search engine 124 shown would determine a list of documents responsive to the search query “boating.” This list of documents would comprise the determined document data. An initial search result list for “boating” could comprise a list of 15 documents. In the embodiment shown, this initial determination of document data may be by means of a conventional search engine query and results return.

Block 210 is followed by block 212, in which a population signal is determined for each article of interest. In the embodiment shown, the search engine 124 generates a population signal 128 for each document of the initial search result list determined in block 210 using a

population function. For example, a population signal may be determined for each of the 15 documents identified in the initial search result determined in block 210.

The population signal indicates a rating or score for the article of interest, and this rating or score reflects the relative interest of those in the same population group as the searching user. For example, articles previously selected by users in the same population group as the querying user 112a when carrying out the same query “Q” as input by the user 112a may receive a higher score for a population signal than articles previously selected only by users in population groups of which the user is not a member. This is but one example, however, and many variables and permutations may be used. This rating or score reflected in the population signal may be used alone or in combination with other scoring or rating signals to score or rank the document, and to rank and compare groups of documents to, for example, provide a search result for the query sent by the user.

In the embodiment shown, the population signal is determined by a population signal function. The population signal function may comprise an algorithm for calculating the population signal based on one or more variables. The population signal function in the embodiment shown comprises a set of instructions processed by the population processor 138. The algorithm is stored in memory 118.

Any one or more of a variety of population signal functions may be implemented by various embodiments of the invention. Examples of variables that may be included in a population signal function include, without limitation, one or more of the following:

- a total selection score for an article “d” for query “q,” (e.g., the total number of clicks by all users on document “d” returned in search results in the context of query “q”, or the total number of members of a population that selected a document “d”);

- a selected or calculated weight of relationship between the selection score for article “d” for a query “q” (e.g., the total number of clicks by all users in population “pop” on the document “d” returned in search results in the context of search query “q.”);
- a selection score for document “d” for query “q” in the context of members of a population “pop” (e.g., a number of clicks for a document by members of the population when the document is returned for a search for query “q”);
- a smoothing factor that reflects how much data is needed to trust a click signal (e.g., a factor that reflects reliability or trust in the number of clicks by all users on document “d” returned in search results for query “q”);
- a selection score for document “d” (e.g. number of clicks on document “d”) for query “q” in the context of all users regardless of a population;
- a total selection score for a set of documents (e.g., the number of clicks on all documents returned for query “q”) by all users regardless of population;
- a selection score for a set of documents (e.g., the number of clicks on all documents returned for query “q”) by all users in a population “pop”;
- a total selection score for document “d” (e.g. number of clicks on document “d”) by all users in a population “pop” for any query “q_i”;
- a selection score for document “d” (e.g. number of clicks on document d”) by all users regardless of population for any query “q_i”;
- a number of times a query “q” was input by users in a population “pop”;
- a number of times a query “q” was input by all users regardless of population;
- a number of members of a population (e.g., a number of members of a population that input a particular search query, selected a result returned for a particular search query, or were shown search results for a particular search query);

- one or more other ranking factors or scores, based on population, the article under consideration, and/or other factors.

There are a variety of other variables that may be included, and these are only examples. Moreover, these and other variables may be limited or defined by designated time period, a designated number of users, the number of users who are self-identified or automatically identified in a population, by those who input a query “Q,” or by other limitations or refinements. Variables, limitations, definitions, or other data associated with population data are generally referred to as population information or population data.

An example of a population signal function is as follows:

$$(1) \quad S(q, d_j) = \frac{\#(q, d_j, P) + \mu \left[\frac{\#(q, d_j)}{\sum_{i=1}^N \#(q, d_i)} + \mu \right]}{\sum_{i=1}^N \#(q, d_i, P) + \mu}$$

wherein “ $S(q, d_j)$ ” is a score calculated for document “j” for a search query “q,” based upon the population information and clickthrough data for users of a particular population “P;”

“ $\#(q, d_j, P)$ ” is the number of times document “d” was clicked by users in population “pop” for search query “q;”

“ μ ” is a smoothing factor that reflects how much data is needed to trust a click signal such as the number of clicks by users of population “P” for a query “q;”

“ $\#(q, d_j)$ ” is the number of times document “d” was clicked by all users regardless of population for query “q;”

“ $\#(q, d_i)$ ” is the total number of user clicks on document “i” for query “q;” and

"# (q, d_i, P)" is the total number of user clicks for all users of population "P" for document "i" for query "q."

Another example of a population signal is as follows:

$$(2) \quad S(q, d_i) = \frac{\#(q, d_i, P) + \mu \left[\frac{\#(q, d_i)}{\sum_{i=1}^N SH(q, d_i)} + \mu \right]}{\sum_{i=1}^N SH(q, d_i, P) + \mu}$$

5 wherein "SH(q, d_i)" is the number of times document "i" was shown for query "q;"

"SH(q, d_i, P)" is the number of times document "i" was shown for query "q" for population "P;" and

the other variables are described with respect to example (1).

Another example of a population signal is as follows:

10

$$(3) \quad S(q, d_i) = \frac{\#(q, d_i, P) + \mu_1 \left[\frac{\#(q, d_i)}{\sum_{i=1}^N \#(q, d_i)} + \mu_2 \right]}{\sum_{i=1}^N \#(q, d_i, P) + \mu_1}$$

wherein "μ₁" is a smoothing factor that reflects how much data is needed to trust a click signal such as the number of clicks by users of population "P" for a query "q;"

“ μ_2 ” is a smoothing factor that reflects the how much data is needed to trust a click signal such as in the number of clicks by all users for a query “q;” and

the other variables are described with respect to examples (1) and / or (2).

For purposes of illustration, the algorithm from example (1) is embodied in the
5 example method according to the present invention shown in FIGs. 2-3. Other algorithms besides the examples shown in (1), (2), and (3) may be used in accordance with the present invention, and algorithm (1) is provided to illustrate examples. Such other algorithms may contain some, all, or none of the variables shown in examples (1), (2), and (3).

FIG. 3 illustrates an example of a subroutine **212** for carrying out the method **200**
10 shown in FIG. 2 in accordance with example (1). The subroutine **212** shown provides a population signal **128** for each document received in an initial search result **132**. In other embodiments, the number of documents so analyzed may be limited to less than all documents received. An example of subroutine **212** is as follows.

Referring to FIG. 3, the example subroutine **212** begins at block **300**. At block **300**, a
15 counter associated with the search engine **124** is set to a value such as “1.” For example, the population processor **138** can set a variable “i” in an associated memory **118** to an initial value of “1.” The counter or variable “i” counts the number of documents that are processed by the subroutine **212**, and the current value of “i” reflects which document in the list of documents in the document data is under operation.

20 Block **300** is followed by block **302**, in which another counter associated with the search engine **124** is set to a value such as “1.” For example, the population processor **138** can set a variable “j” in an associated memory **118** to an initial value of “1.” The counter or variable “j” counts the number of documents that are processed by the subroutine **212**, and the current

value of “j” reflects which document in the list of documents in the document data is under operation.

Block 302 is followed by block 304, in which a population is determined for querying user 112a. The search engine 124 determines a population, in this case “P.” For example, the
5 search engine 124 determines a population associated with the user inputting the search query “Q.” As previously described, self-identification data or automatic-identification data, or a combination of both, can be utilized by the search engine 124 to determine a population associated with the user. In this embodiment, the search engine 124 determines from a user’s Internet Protocol address that the user is likely from France, designated as population “F,”
10 therefore the search engine 124 cross-references population information of users from France that have previously selected document “D₁” for the query “Q.” Upon determining a population “P” for the querying user, the search engine 124 can call to the population database 120 to obtain any corresponding population information as needed. For example, the search engine 124 can retrieve data from the population database 120 and determine that a total of “20” users in France,
15 population “F,” have previously selected a particular document “D₁” for the search query “Q.” Therefore, population information for a particular population “P” can be applied by the search engine 124 to calculate a population signal for document “D₁” in accordance with the present invention.

Block 304 is followed by block 306, in which a number of documents for analysis is
20 determined. In block 210, the server 104 received document data associated with the search query 114. Among the data determined was the total number of documents in the list of documents responsive to the search query 114.

This number of documents is characterized by (and is set as) the variable “N.” For example, as mentioned earlier, a search result for the search query “boating” could have 15 documents, and the server 104 would set “N” to a value of “15.”

Note that in alternative embodiments, any total number of documents for a search query that has been defined or otherwise stored by the population database 120 or another data storage device for a particular query can be transmitted to, or otherwise determined by the search engine 124 or population processor 138. Further note that the number of documents for each search result for a particular search query can depend upon the population-type information previously stored in the population database 120 as well as clickthrough data stored in the clickthrough database 122, or on other similar types of data stored in other data storage devices.

Block 306 is followed by block 308, in which a variable “M” is determined. The variable “M” reflects the number of documents for which a population signal is determined. In most instances, “M” will have the same value as the variable “N,” or the number of documents determined in block 306 but it may be different. For example, as mentioned earlier, a search result for the search query “boating” could have 15 documents, wherein the server set the variable N = 15, and the server 104 would also set “M” to a value of “15.”

Block 308 is followed by block 310, in which a smoothing factor is determined. The search engine 124 determines a smoothing factor that reflects how much data is needed to trust a click signal such as user clicks from users from a particular population for a particular query. For example, the population processor 138 utilizes a predetermined equation or set of computer-executable instructions to determine the smoothing factor that accounts for how much data is needed to trust a click signal or the quality of the user clicks from all users and from users from a particular population for a particular query. The smoothing factor can be particularly useful if there are very few user clicks from users of a particular population or if user clicks from a

particular source is known or otherwise perceived not to be reliable or otherwise trustworthy. In that case, the smoothing factor can be set to a constant value or a value that can otherwise influence the weight or value of the data associated with a particular population. In most instances, the smoothing factor is applied to a population signal function or to a set of computer-executable instructions processed by the population processor 138.

As applied to an example, for the query “boating,” the population processor 138 determines a smoothing factor if there is an insufficient number of user clicks from users in France. Thus for the example in the table above, if query “Q” is “boating” and 20 user clicks from users in France is not a sufficient number of clicks to rely upon, then a smoothing factor is determined. The smoothing factor is represented by “ μ ” in the population signal function above in subroutine 212. This factor indicates the reliability or perceived trust in the number of clicks by users in France to the search query “boating.”

As applied to another example, for the query “cricket” by a user in France, the population processor 138 determines a smoothing factor if there is an insufficient number of user clicks from users in France. However, since France is a sub-population of “Europe,” the population processor 138 can use click information corresponding to users in “Europe” to augment the click information for the query “cricket” from the user in France. Generally, if click information for a sub-population is sparse or does not exist, information from a higher population level can be used to augment the click information. In some instances, there may be additional levels of populations and sub-populations that could be used in this manner, i.e., “Parisians” are a sub-population to “France” which is a sub-population to “Europe” which is a sub-population to the “World.”

Note that in some instances, a general smoothing factor can be determined. The search engine 124 determines a general smoothing factor that reflects the reliability or trust in

user clicks by all users for a particular document for a particular query. In the example shown, an assumption is made that the reliability or trust in user clicks from the local population is the same as the reliability or trust of user clicks from the general population, and the smoothing factor as determined above can be used as the general smoothing factor.

5 By way of further example, a general smoothing factor can be determined as follows.

The population processor 138 accesses the population database 120 or other data storage device to retrieve user click data. Using a predetermined equation or set of computer-executable instructions, the population processor 138 determines the number of user clicks by all users for all documents in a search result for a particular query. The general smoothing factor can then be
10 set as the number of clicks or selections by all users for all documents in a search result for a particular query.

If smoothing factors, values, or scores for a particular document for a particular query have previously been stored in the population database 120, the population processor 138 retrieves the smoothing factors, values, or scores for a particular query. For example, the
15 population database 120 may indicate that there is an insufficient number of clicks from all users for a document in a search result for the search query "boating," such as in the table above where only one user from Japan selected a document "D₁" for the query "Q." In this instance, the total number of clicks from all users for all documents in the search result for the search query "boating" should be used. A general population smoothing factor as determined above can then
20 be used in an algorithm to gradually transition between the two results. A determination can be made whether to use the number of clicks from all users for a document in a search result for the search query "boating," or the total number of clicks from all users for all documents in the search result for the search query "boating" so that improved search results can be obtained from population information and selection data.

Block 310 is followed by block 312, in which a number of selections, in this case clicks, by a particular population "P" is determined for the current document of interest (document "i") for a particular query ("Q"). The search engine 124 determines the number of clicks for document "i" when document "i" is returned in search results for query "Q." For example, the population processor 138 accesses population information stored by the population database 120 or other data storage devices as well as clickthrough data stored by the clickthrough database 122 or previously shared with the population database 120. The population processor 138 applies a predetermined equation or set of computer-executable instructions to some or all of the population information and clickthrough data to determine the number of clicks by a population on a document for a search query, also referred to as " $\#(q, d_i, P)$." For example, if the query "Q" is "boating," then it can be determined that there were 20 total user clicks by users in the France on document "D₁" for query "Q."

Block 312 is followed by block 314, in which a number of selections, in this case clicks, by all users is determined for the current document of interest (document "i") for a particular query ("Q"). The search engine 124 determines the number of clicks by all users for document "i" when document "i" is returned in search results for query "Q." For example, the population processor 138 accesses population information stored by the population database 120 or other data storage devices as well as clickthrough data stored by the clickthrough database 122 or previously shared with the population database 120. The population processor 138 applies a predetermined equation or set of computer-executable instructions to some or all of the population information and clickthrough data to determine the number of clicks by all users regardless of population on a document for a search query, also referred to as " $\#(q, d_i)$." For example, if the query "Q" is "boating," then it can be determined that there were 101 total user clicks by all users regardless of population on document "D₁" for query "Q."

Block 314 is followed by decision block 316, in which a decision is made whether all documents for a search query have been processed. The search engine 124 compares the counter or variable “i” initially set at a value of “1” in block 300 to the variable “N,” which has been set to a value in block 306 according to the number of documents to be processed for the search query “Q.” If not all the documents have been processed, then the counter or variable “i” will not equal the variable “N” and the “NO” branch is followed to block 318. In alternative embodiments, a maximum number of documents for analysis may be set. For example, “N” may be set to a maximum number that is less than the number of documents determined in block 306.

In block 318, a counter is incremented to track the number of documents that have been processed. For example, the counter or variable “i” initially set at a value of “1” is incremented to a next value such as “2.” The subroutine 212 then returns to block 312 to continue processing the next document. Subsequent documents are processed by blocks 312-314, and the counter or variable “i” at block 318 is subsequently incremented until all of the documents are processed, and the value of the counter or variable “i” equals “N.” Thus, in the example provided previously for “boating,” all 15 documents of the search result for the search query “boating” would be processed by blocks 312-314.

When all of the documents have been processed, the “YES” branch is followed from decision block 318, and the subroutine 212 continues at block 320.

At block 320, a sum of the number of selections, in this case clicks, by a particular population “P” for all documents (documents “i”) for a particular query (“Q”), and a sum of the number of selections, in this case clicks, by all users for all documents (documents “i”) for a particular query (“Q”) are determined. In the embodiment shown, the search engine 124 determines a sum of the number of selections, in this case clicks, by a particular population “P” for all documents (documents “i”) for a particular query (“Q”) that describes the total number of

clicks by the particular population "P" on documents associated with a search query "Q." For example, the population processor 138 determines a sum which reflects some or all user clicks from a particular population "F" on documents returned in response to a prior search for a search query "Q." The sum can then be applied by the search engine 124 or population processor 138
5 to a population signal function or to set of computer-executable instructions. Note that the number of selections determined in block 312 is summed by block 320 for all documents "i."

Furthermore, the search engine 124 determines a sum of the number of selections, in this case clicks, by all users for all documents (documents "i") for a particular query ("Q") that describes the total number of clicks by all users regardless of population on documents
10 associated with a search query "Q." For example, the population processor 138 determines a sum which reflects some or all user clicks from all users regardless of population on documents returned in response to a prior search for a search query "Q." The sum can then be applied by the search engine 124 or population processor 138 to a population signal function or to set of computer-executable instructions. Note that the number of selections determined in block 314 is
15 also summed by block 320 for all documents "i."

Block 320 is followed by block 322, in which a smoothing factor is determined. The search engine 124 determines a smoothing factor " μ " that reflects how much data is needed to trust a click signal such as user clicks from users from a particular population for a particular query. For example, the population processor 138 utilizes a predetermined equation or set of
20 computer-executable instructions to determine the smoothing factor that accounts for how much data is needed to trust a click signal such as the user clicks from all users and from users from a particular population for a particular query. The smoothing factor can be particularly useful if there are very few user clicks from users of a particular population or if user clicks from a particular source is known or otherwise perceived not to be reliable or otherwise trustworthy.
25 For example, as applied to the example for the query "Q" in the table above, since there is only a

single click from users in Japan on document "D1" for the query "Q," the smoothing factor " μ " can be set to a constant value such as "10." In this case, the smoothing factor can be used to affect or otherwise influence the weight or value of the data associated with a particular population. In most instances, the smoothing factor is applied to a population signal function or
5 to a set of computer-executable instructions processed by the population processor 138.

Note that in some instances, a general smoothing factor can be determined. The search engine 124 determines a general smoothing factor that reflects how much data is needed to trust a click signal such as user clicks by all users for a particular document for a particular query. In the example shown, an assumption is made that the amount of data needed to trust user
10 clicks from the local population is the same as the amount of data needed to trust user clicks from the general population, and the smoothing factor as determined above can be used as the general smoothing factor.

By way of further example, a general smoothing factor can be determined as follows. The population processor 138 accesses the population database 120 or other data storage device
15 to retrieve user click data. Using a predetermined equation or set of computer-executable instructions, the population processor 138 determines the number of user clicks by all for a particular document for a particular query.

If smoothing factors, values, or scores for a particular document for a particular query have previously been stored in the population database 120, the population processor 138
20 retrieves the smoothing factors, values, or scores for a particular query. For example, the population database 120 may indicate that there is an insufficient number of clicks from all users for a document in a search result for the search query "boating," and that the total number of clicks from all users for all documents in the search result for the search query "boating" should be used. A general population smoothing factor can gradually transition between the two results.

A determination can be made whether to use the number of clicks from all users for a document in a search result for the search query "boating," or the total number of clicks from all users for all documents in the search result for the search query "boating" so that improved search results can be obtained from population information and selection data.

5 Block 322 is followed by block 324, in which a number of selections, in this case clicks, by all users for each document (document "j") returned in a search result for a particular query ("Q"). The search engine 124 determines the number of clicks for document "j" regardless of population when document "j" is returned in search results for query "Q." For example, the population processor 138 accesses population information stored by the population database 120
10 or other data storage devices as well as clickthrough data stored by the clickthrough database 122 or previously shared with the population database 120. The population processor 138 applies a predetermined equation or set of computer-executable instructions to some or all of the population information and clickthrough data to determine the number of clicks by a population on a document for a search query, also referred to as " $\#(q,d_j)$." For example, if the query "Q" is
15 "boating," then it can be determined that there were 101 total user clicks by all users on document "D₁" for query "Q."

 Block 324 is followed by block 326, in which a number of selections, in this case clicks, by all users in a population "P" is determined for each document (document "j") returned in a search result for a particular query ("Q"). The search engine 124 determines the number of
20 clicks by all users in a population "P" for document "j" when document "j" is returned in search results for query "Q." For example, the population processor 138 accesses population information stored by the population database 120 or other data storage devices as well as clickthrough data stored by the clickthrough database 122 or previously shared with the population database 120. The population processor 138 applies a predetermined equation or set
25 of computer-executable instructions to some or all of the population information and

clickthrough data to determine the number of clicks by a population on a document for a search query, also referred to as " $\#(q,d_j,P)$." For example, if the query "Q" is "boating," then it can be determined that there were 20 total user clicks by all users in the population of France on document "D₁" for query "Q."

5 Block 326 is followed by block 328, in which a population signal for a document for a particular search query is determined. The search engine 124 determines a population signal 128 for a particular document in a search result 132. For example, the population processor 138 uses a number of factors such as the number of times a search query was asked by users of a particular population; the number of times a search query was asked by all users; the number of
10 times a search query was asked and a particular document was clicked by users of a particular population; the number of times a search query was asked and a particular document was clicked by users of all populations; the number of times a document was clicked by users of a particular population for any search query; the number of times a document was clicked by all users for any search query; the smoothing factor, if needed; and the population click weight, if needed, to
15 determine a population signal 128 for a particular document in a search result.

 In the embodiment shown, this population signal 128 is calculated using the data determined in previous blocks 300-324 discussed and the algorithm shown in example (1). As applied to the prior example for the query "boating," the population processor 138 determines a population signal 128 for a particular document in a search result 132. As represented by
20 " $S(Q,D_j)$ " in the population signal function as shown above in subroutine 212, a weighted value representing the weighted total number of user clicks on document "j" after counting clicks by users of a particular population "F" is determined by the population processor 138. This is carried out by performing the mathematical functions as indicated by the algorithm described above to calculate the $S_j(Q,D_j)$ for document "j."

Block 328 is followed by decision block 330, in which a decision is made whether all documents for a search query have been processed. The search engine 124 compares the counter or variable “j” initially set at a value of “1” in block 302 to the variable “M,” which has been set to a value according to the number of documents to be processed for the search query. If all the documents have been processed, then the counter or variable “j” will equal the variable “M” and the “YES” branch is followed to block 332. In alternative embodiments, a maximum number of documents for analysis may be set. For example, “M” may be set to a maximum number that is less than the number of documents determined in block 302.

In block 332, the subroutine 212 ends.

If however in decision block 330, not all of the documents have been processed and the counter or variable “j” is not equal to the variable “M,” then the “NO” branch is followed to block 334.

In block 334, a counter is incremented to track the number of documents that have been processed. For example, the counter or variable “j” initially set at a value of “1” is incremented to a next value such as “2.” The subroutine 212 then returns to block 324 to continue processing the next document. Subsequent documents are processed by blocks 324-328, and the counter or variable “j” at block 334 is subsequently incremented until all of the documents are processed, and the value of the counter or variable “j” equals “M.” Thus, in the example provided previously for “boating,” all 15 documents of the search result for the search query “boating” would be processed by blocks 324-328.

When all of the documents have been processed, the “YES” branch is followed from decision block 332, and the subroutine 212 ends at block 332.

Referring again to FIG. 2, subroutine 212 is followed by block 214, in which the population signal for each document is provided to the ranking processor. For example, in the

embodiment shown, the calculated score " $S(Q,D_j)$ " for each document "1 - N" would be included in "N" population signals. The population signal 128 for each document is transmitted to the ranking processor 136 for determining subsequent rankings or scores of search results in response to other search queries. The ranking processor 136 includes a ranking or scoring
5 function or set of computer-executable instructions that incorporates the population signal 128 and/or other output from the population processor 138. For example, a weighted value generated from subroutine 212 is transmitted to the ranking processor 136, which utilizes a population signal 128 such as a weighted value to rank or otherwise score subsequent search results. Other signals 130 generated for each document by the search engine 124 or another system or method
10 can also be transmitted to the ranking processor 136 to rank or score subsequent search results.

Block 214 is followed by block 216, in which search results are provided. The ranking processor 136 generates a ranking or scoring of each document located in a search result 132 in response to a search query 114. Using the population signal 128 from block 214, such as a weighted value, the ranking processor 136 affects the ranking or scoring of one or more
15 documents located in a search result 132. Note that the ranking processor 136 can use other signals such as those shown in FIG. 1 as 130 in conjunction with the population signal 128 to rank or otherwise score documents of a search result 132. In some instances, the ranking processor 136 can further decide whether to utilize a particular population signal 128 and/or other signals 130 during processing of a score or ranking for a search result 132.

20 Block 216 is followed by block 218, in which the method 200 ends.

In other embodiments of the invention, the method 200 can be utilized in an iterative manner to determine a new or updated population signal whenever new or changes to data in the population database 120 and/or clickthrough database 122 or other data storage devices is received or otherwise obtained. When a new or updated population signal is determined, the

signal can then be transmitted to the ranking processor 136 to change or to update the ranking or scores for a search result 132.

While the above description contains many specifics, these specifics should not be construed as limitations on the scope of the invention, but merely as exemplifications of the disclosed embodiments. Those skilled in the art will envision many other possible variations that are within the scope of the invention.

CLAIMS

That which is claimed:

1. A method for determining a search ranking score, comprising:
 - (a) receiving a search query;
 - 5 (b) determining a first population associated with the search query;
 - (c) determining a first article associated with the search query; and
 - (d) determining a first ranking score for the first article based at least in part on data associated with the first population.
- 10 2. The method of claim 1, wherein determining the first population associated with the search query comprises determining a demographic data associated with a sender of the search query.
3. The method of claim 2, wherein determining the demographic data associated with the
15 sender comprises determining a likely geographic location for the sender.
4. The method of claim 3, wherein determining the likely geographic location for the sender comprises determining at least one of the following: the Internet Protocol address from which the search query was sent; an address input by the sender to access a search engine; and
20 demographic data input by the sender.
5. The method of claim 2, wherein determining the demographic data for the sender comprises determining at least one of the following: age, age range, sex, race, primary language, secondary language, location, income, income range, a continent, a region, a country, a state, a
25 county, a city, a gender, an ethnic group, a group, persons with a shared characteristic, persons

with a shared interest, persons grouped by a predetermined selection, and internet service provider data.

6. The method of claim 1, wherein determining the first population associated with the
5 search query comprises determining a demographic data associated with the search query.

7. The method of claim 6, wherein determining the demographic data associated with the
search query comprises at least one of the following: determining the language of the search
query; and determining data associated with previous senders of the search query.

10

8. The method of claim 1, wherein determining the first population associated with the
search query comprises determining a self-identification data associated with a user transmitting
the search query.

15 9. The method of claim 8, wherein the self-identification data is selected from at least one of
the following: user registration data, user preference data, and user selected data.

10. The method of claim 1, wherein determining the first population associated with the
search query comprises determining an automatic-identification data associated with a user
20 transmitting the search query.

11. The method of Claim 10, wherein the automatic-identification data comprises at least one
of the following: an IP address, a domain, and default data obtained an application associated
with the user.

25

12. The method of claim 1, wherein the data associated with the first population comprises a selection score for the first article in a context of the first population.

13. The method of claim 12, wherein the selection score for the first article in the context of
5 the first population comprises a number of clicks for the first article by members of the first population.

14. The method of claim 1, wherein the data associated with the first population comprises a number of members of the first population.

10

15. The method of claim 14, wherein the number of members of the first population comprises a number of members of the first population that selected a result returned for the search query.

15 16. The method of claim 14, wherein the number of members of the first population comprises a number of members of the first population that input the search query.

17. The method of claim 14, wherein the number of members of the first population comprises a number of members of the first population to which search results for the search
20 query were shown.

18. The method of claim 1, wherein the data associated with the first population comprises a total selection score.

19. The method of claim 18, wherein the total selection score comprises a total number of members of the first population that selected the first article.

20. The method of claim 1, further comprising determining a second population associated with the search query; and wherein determining the first ranking score for the first article is further based at least in part on data associated with the second population.

21. The method of claim 1, further comprising
(e) determining a second article associated with the search query; and
10 (d) determining a second ranking score for the second article based at least in part on data associated with the first population.

22. The method of claim 21, further comprising ranking the first article and the second article based at least in part on the first ranking score and the second ranking score.

15

23. A computer-readable medium containing program code, comprising:
(a) program code for receiving a search query;
(b) program code for determining a first population associated with the search query;
(c) program code for determining a first article associated with the search query; and
20 (d) program code for determining a first ranking score for the first article based at least in part on data associated with the first population.

24. The computer-readable medium of claim 23, wherein the program code for determining a first population associated with the search query is adapted for determining a demographic data
25 associated with a sender of the search query.

25. The computer-readable medium of claim 24, wherein determining a demographic data associated with a sender comprises determining a likely geographic location for the sender.

5 26. The computer-readable medium of claim 25, wherein determining a likely geographic location for a sender comprises determining at least one of the following: the Internet Protocol address from which the search query was sent; an address input by the sender to access a search engine; and demographic data input by the sender.

10 27. The computer-readable medium of claim 24 wherein determining the demographic data for a sender comprises determining at least one of the following: age, age range, sex, race, primary language, secondary language, location, income, income range, a continent, a region, a country, a state, a county, a city, a gender, an ethnic group, a group, persons with a shared characteristic, persons with a shared interest, persons grouped by a predetermined selection, and
15 internet service provider data.

28. The computer-readable medium of claim 23, wherein determining the first population associated with the search query comprises determining a demographic data associated with the search query.

20

29. The computer-readable medium of claim 28, wherein determining the demographic data associated with the search query comprises at least one of the following: determining the language of the search query; and determining data associated with previous senders of the search query.

25

30. The computer-readable medium of claim 23, wherein determining the first population associated with the search query comprises determining a self-identification data associated with a user transmitting the search query.

5 31. The computer-readable medium of claim 31, wherein the self-identification data is selected from at least one of the following: user registration data, user preference data, and user selected data.

32. The computer-readable medium of claim 23, wherein determining the first population
10 associated with the search query comprises determining an automatic-identification data associated with a user transmitting the search query.

33. The computer-readable medium of claim 32, wherein the automatic-identification data comprises at least one of the following: an IP address, a domain, and default data obtained an
15 application associated with the user.

34. The computer-readable medium of claim 23, wherein the data associated with the first population comprises a selection score for the first article in a context of the first population.

20 35. The computer-readable medium of claim 34, wherein the selection score for the first article in the context of the first population comprises a number of clicks for the first article by members of the first population.

36. The computer-readable medium of claim 23, wherein the data associated with the first
25 population comprises a number of members of the first population.

37. The computer-readable medium of claim 36, wherein the number of members of the first population comprises a number of members of the first population that selected a result returned for the search query.

5

38. The computer-readable medium of claim 36, wherein the number of members of the first population comprises a number of members of the first population that input the search query.

39. The computer-readable medium of claim 36, wherein the number of members of the first
10 population comprises a number of members of the first population to which search results for the search query were shown.

40. The computer-readable medium of claim 23, wherein the data associated with the first population comprises a total selection score.

15

41. The computer-readable medium of claim 40, wherein the total selection score comprises a total number of members of the first population that selected the first article.

42. The computer-readable medium of claim 23, further comprising determining a second
20 population associated with the search query; and wherein determining the first ranking score for the first article is further based at least in part on data associated with the second population.

43. The computer-readable medium of claim 23 further comprising:
- (e) program code for determining a second article associated with the search query; and
 - (f) program code for determining a second ranking score for the second article based at least in part on data associated with the first population.

5

44. The computer-readable medium of claim 43 further comprising ranking the first article and the second article based at least in part on the first ranking score and the second ranking score.

1/3

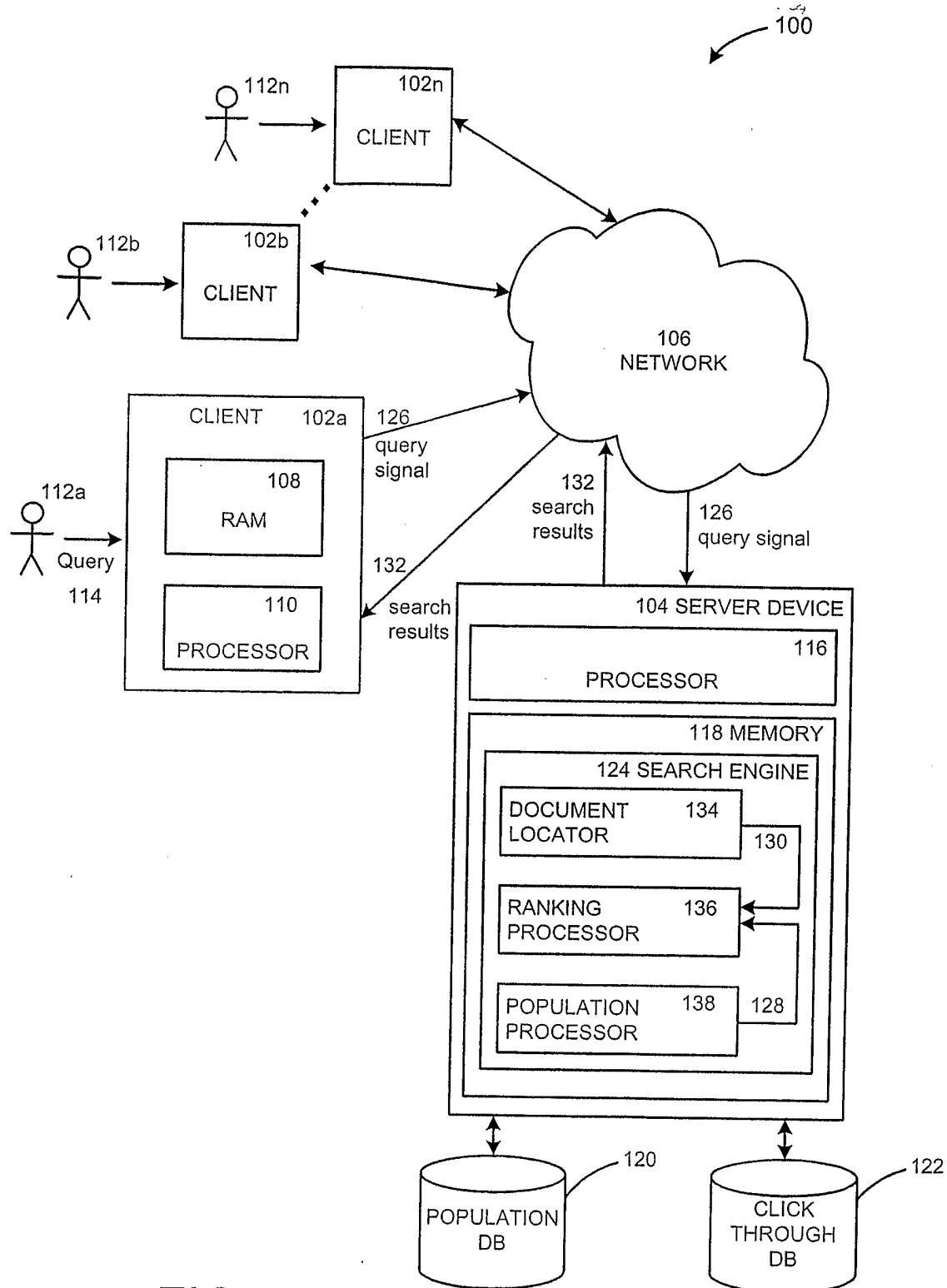


FIG. 1

2/3

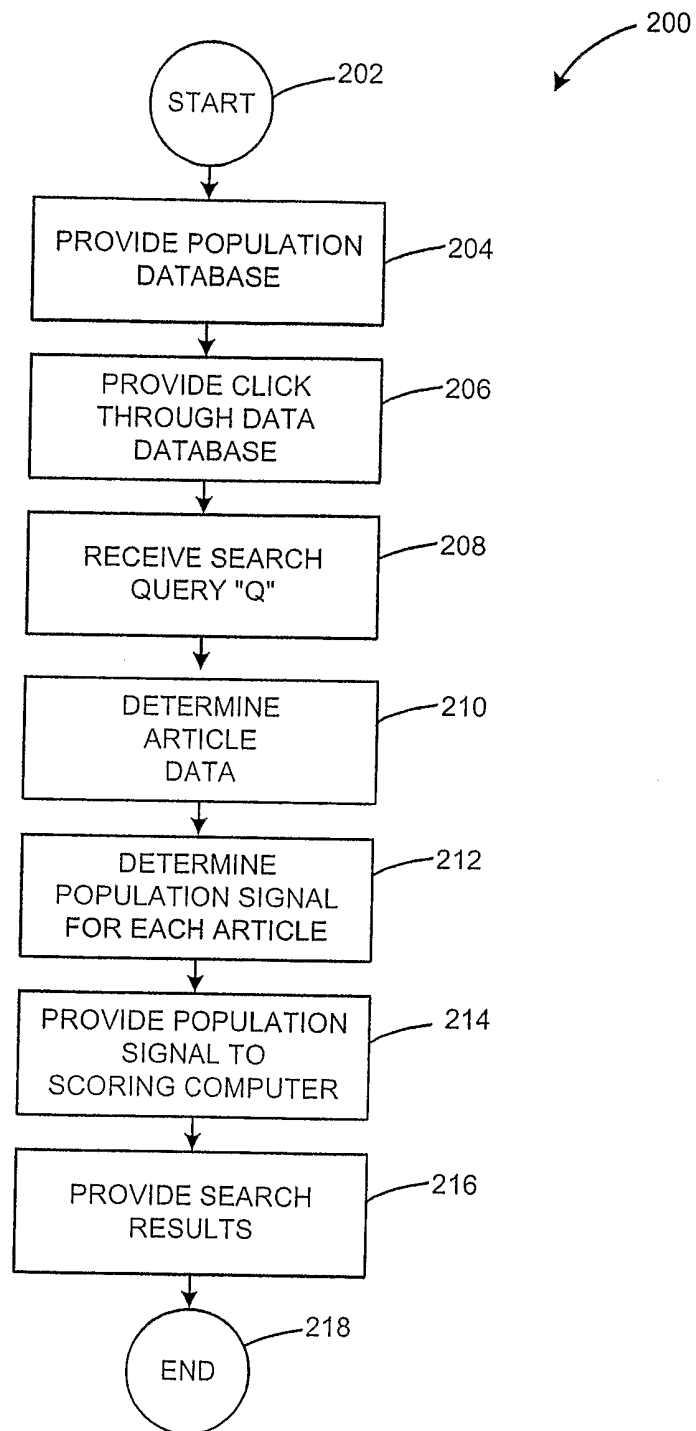
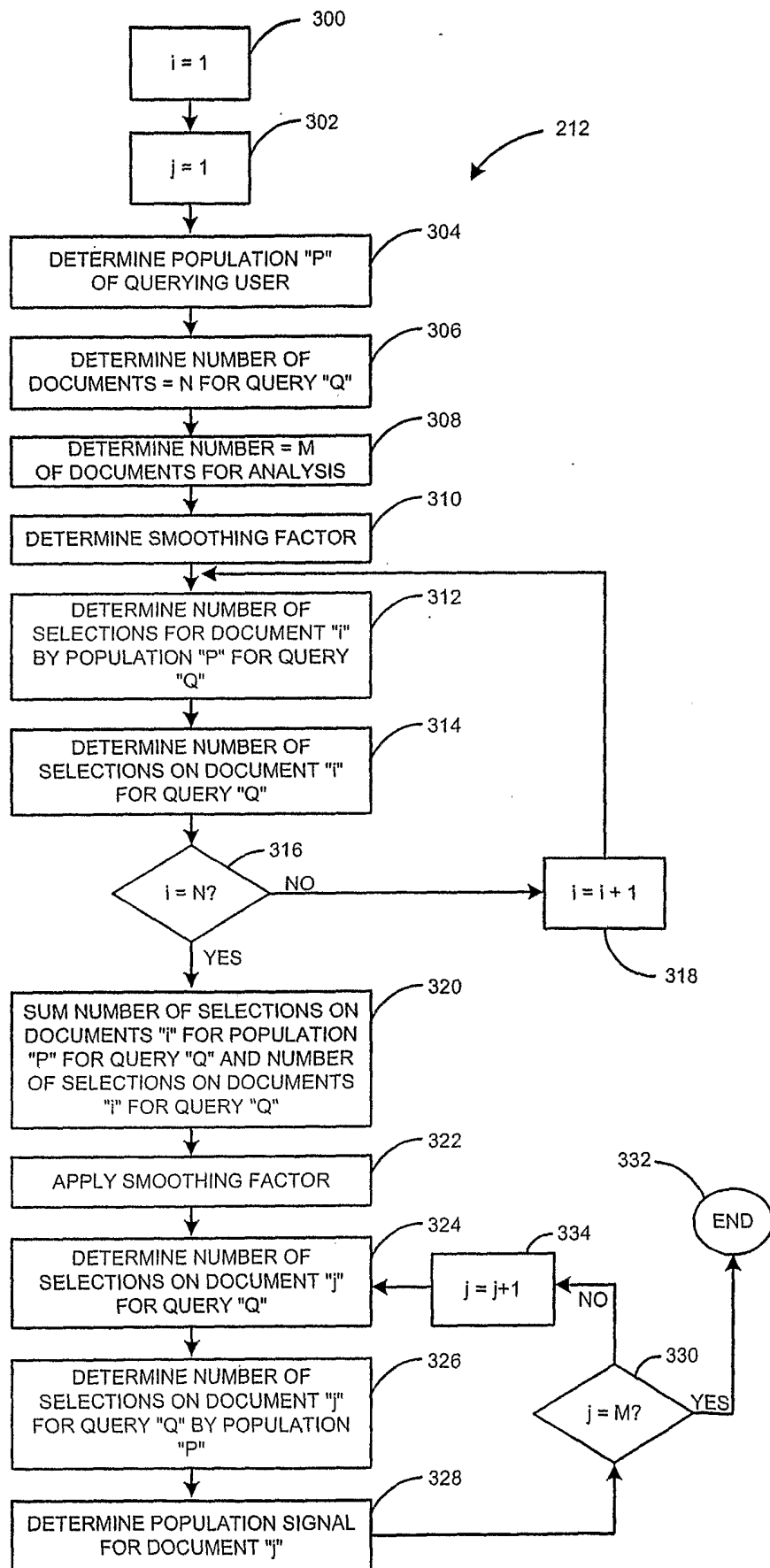


FIG. 2

3/3

FIG. 3



INTERNATIONAL SEARCH REPORT

International Application No
PCT/US2004/029618

A. CLASSIFICATION OF SUBJECT MATTER
IPC 7 G06F17/30

According to International Patent Classification (IPC) or to both national classification and IPC

B. FIELDS SEARCHED

Minimum documentation searched (classification system followed by classification symbols)
IPC 7 G06F

Documentation searched other than minimum documentation to the extent that such documents are included in the fields searched

Electronic data base consulted during the international search (name of data base and, where practical, search terms used)

EPO-Internal, WPI Data, INSPEC

C. DOCUMENTS CONSIDERED TO BE RELEVANT

Category °	Citation of document, with indication, where appropriate, of the relevant passages	Relevant to claim No.
X	US 6 539 377 B1 (CULLISS GARY A) 25 March 2003 (2003-03-25) abstract column 1, line 24 - column 2, line 52 column 3, line 11 - column 3, line 65 column 5, line 21 - column 6, line 29 column 7, line 8 - column 8, line 39 column 11, line 35 - column 11, line 38	1-44
X	WO 01/67297 A (BEZEM SHLOMO ; JACOBSON RON (IL); KLEINBERGER PAUL (IL); TZUNAMI INC () 13 September 2001 (2001-09-13) abstract page 5, line 3 - page 7, line 17 page 8, line 20 - page 10, line 6 page 12, line 1 - page 13, line 9 page 13, line 25 - page 14, line 13 page 20, line 1 - page 20, line 13 ----- -/--	1-44

☒ Further documents are listed in the continuation of box C.

☒ Patent family members are listed in annex.

° Special categories of cited documents :

A document defining the general state of the art which is not considered to be of particular relevance

E earlier document but published on or after the international filing date

L document which may throw doubts on priority claim(s) or which is cited to establish the publication date of another citation or other special reason (as specified)

O document referring to an oral disclosure, use, exhibition or other means

P document published prior to the international filing date but later than the priority date claimed

T later document published after the international filing date or priority date and not in conflict with the application but cited to understand the principle or theory underlying the invention

X document of particular relevance; the claimed invention cannot be considered novel or cannot be considered to involve an inventive step when the document is taken alone

Y document of particular relevance; the claimed invention cannot be considered to involve an inventive step when the document is combined with one or more other such documents, such combination being obvious to a person skilled in the art.

* & * document member of the same patent family

Date of the actual completion of the international search

10 December 2004

Date of mailing of the international search report

21/12/2004

Name and mailing address of the ISA

European Patent Office, P.B. 5818 Patentlaan 2
NL - 2280 HV Rijswijk
Tel. (+31-70) 340-2040, Tx. 31 651 epo nl,
Fax: (+31-70) 340-3016

Authorized officer

Boyadzhiev, Y

INTERNATIONAL SEARCH REPORT

International Application No
PCT/US2004/029618

C.(Continuation) DOCUMENTS CONSIDERED TO BE RELEVANT		
Category *	Citation of document, with indication, where appropriate, of the relevant passages	Relevant to claim No.
A	US 6 353 849 B1 (LINSK STEVEN J) 5 March 2002 (2002-03-05) abstract column 1, line 12 - column 2, line 42 column 3, line 11 - column 4, line 45 -----	1-44
A	WO 00/77689 A (TRIAGO INC) 21 December 2000 (2000-12-21) page 6, line 1 - page 7, line 7 page 9, line 2 - page 9, line 7 page 10, line 1 - page 11, line 1 page 12, line 8 - page 13, line 24 page 18, line 1 - page 18, line 22 -----	1-44

INTERNATIONAL SEARCH REPORT

International Application No
PCT/US2004/029618

Patent document cited in search report	Publication date	Patent family member(s)	Publication date
US 6539377	B1	25-03-2003	US 6182068 B1 30-01-2001
		US 6078916 A	20-06-2000
		US 6014665 A	11-01-2000
		US 6006222 A	21-12-1999
		US 2003187837 A1	02-10-2003
		AU 2035199 A	22-02-1999
		WO 9906924 A1	11-02-1999
WO 0167297	A	13-09-2001	AU 4100001 A 17-09-2001
		WO 0167297 A1	13-09-2001
US 6353849	B1	05-03-2002	US 6138142 A 24-10-2000
WO 0077689	A	21-12-2000	AU 7823400 A 02-01-2001
		CA 2376789 A1	21-12-2000
		EP 1203323 A1	08-05-2002
		WO 0077689 A1	21-12-2000