

(19) World Intellectual Property
Organization
International Bureau



(43) International Publication Date
10 February 2005 (10.02.2005)

PCT

(10) International Publication Number
WO 2005/013153 A1

(51) International Patent Classification⁷: **G06F 17/30**

(21) International Application Number:
PCT/US2004/024306

(22) International Filing Date: 27 July 2004 (27.07.2004)

(25) Filing Language: English

(26) Publication Language: English

(30) Priority Data:
10/629,479 28 July 2003 (28.07.2003) US

(71) Applicant (for all designated States except US):
GOOGLE INC. [US/US]; 1600 Amphitheatre Park-
way, Bldg. 41, Mountain View, CA 94043 (US).

(72) Inventors; and

(75) Inventors/Applicants (for US only): **BRIN, Sergey**

[US/US]; 555 Bryant Street, #163, Palo Alto, CA 94301 (US). **GOMES, Benedict** [US/US]; 79 Eldora, Mountain View, CA 94041 (US). **TONG, Simon** [GB/US]; 541 Del Medio Way, Apt. 319, Mountain View, CA 94040 (US).

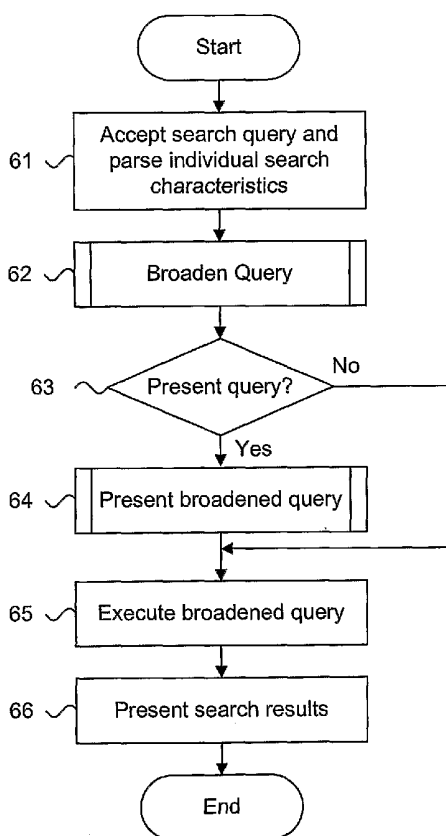
(74) Agent: **INOUE, Patrick, Joseph, Sus**; 810 Third Avenue, Ste 258, Seattle, WA 98104 (US).

(81) Designated States (unless otherwise indicated, for every kind of national protection available): AE, AG, AL, AM, AT, AU, AZ, BA, BB, BG, BR, BW, BY, BZ, CA, CH, CN, CO, CR, CU, CZ, DE, DK, DM, DZ, EC, EE, EG, ES, FI, GB, GD, GE, GH, GM, HR, HU, ID, IL, IN, IS, JP, KE, KG, KP, KR, KZ, LC, LK, LR, LS, LT, LU, LV, MA, MD, MG, MK, MN, MW, MX, MZ, NA, NI, NO, NZ, OM, PG, PH, PL, PT, RO, RU, SC, SD, SE, SG, SK, SL, SY, TJ, TM, TN, TR, TT, TZ, UA, UG, US, UZ, VC, VN, YU, ZA, ZM, ZW.

(84) Designated States (unless otherwise indicated, for every kind of regional protection available): ARIPO (BW, GH,

[Continued on next page]

(54) Title: PROVIDING A USER INTERFACE WITH SEARCH QUERY BROADENING



(57) Abstract: A system (10) and method (60) for providing a user interface (37) with search query broadening is presented. A query (40) defining a search executable on potentially retrievable information (22) is accepted. The query (40) is parsed. A broadened query (40) is provided. At least one of the broadened query (40) and results of a search (52) executed on the broadened query (40) is presented.



GM, KE, LS, MW, MZ, NA, SD, SL, SZ, TZ, UG, ZM, ZW), Eurasian (AM, AZ, BY, KG, KZ, MD, RU, TJ, TM), European (AT, BE, BG, CH, CY, CZ, DE, DK, EE, ES, FI, FR, GB, GR, HU, IE, IT, LU, MC, NL, PL, PT, RO, SE, SI, SK, TR), OAPI (BF, BJ, CF, CG, CI, CM, GA, GN, GQ, GW, ML, MR, NE, SN, TD, TG).

Published:

— with international search report

— before the expiration of the time limit for amending the claims and to be republished in the event of receipt of amendments

For two-letter codes and other abbreviations, refer to the "Guidance Notes on Codes and Abbreviations" appearing at the beginning of each regular issue of the PCT Gazette.

5 **PROVIDING A USER INTERFACE WITH SEARCH QUERY BROADENING**

TECHNICAL FIELD

The present invention relates in general to query processing and, in particular, to a system and method for providing a user interface with search query broadening.

BACKGROUND ART

10 Although the Internet traces back to the late 1960s, the widespread availability and acceptance of personal computing and internetworking have resulted in the explosive growth and unprecedented advances in information sharing technologies. In particular, the Worldwide Web (“Web”) has revolutionized accessibility to untold volumes of information in stored electronic form to a worldwide audience, including written, spoken (audio) and visual (imagery and video)
15 information, both in archived and real-time formats. In short, the Web has provided desktop access to every connected user to a virtually unlimited library of information in almost every language worldwide.

Information exchange on the Web operates under a client-server model. Individual clients execute Web content retrieval and presentation applications, typically in the form of Web
20 browsers. The Web browsers send request messages for Web content to centralized Web servers, which function as data storage and retrieval repositories. The Web servers parse the request messages and return the requested Web content in response messages.

Search engines have evolved in tempo with the increased usage of the Web to enable users to find and retrieve relevant Web content in an efficient and timely manner. As the amount
25 and types of Web content has increased, the sophistication and accuracy of search engines has likewise improved. Generally, search engines strive to provide the highest quality results in response to a search query. However, determining quality is difficult, as the relevance of retrieved Web content is inherently subjective and dependent upon the interests, knowledge and attitudes of the user.

30 Existing methods used by search engines are based on matching search query terms to terms indexed from Web pages. More advanced methods determine the importance of retrieved Web content using, for example, a hyperlink structure-based analysis, such as described in S. Brin and L. Page, “The Anatomy of a Large-Scale Hypertextual Search Engine,” (1998) and in

U.S. Patent No. 6,285,999, issued September 4, 2001 to Page, the disclosures of which are incorporated by reference.

A typical search query scenario begins with either a natural language question or individual terms, often in the form of keywords, being submitted to a search engine. The search engine executes a search against a data repository describing information characteristics of potentially retrievable Web content and identifies the candidate Web pages. Searches can often return thousands or even millions of results, so most search engines typically rank or score only a subset of the most promising results. The top Web pages are then presented to the user, usually in the form of Web content titles, hyperlinks, and other descriptive information, such as snippets of text taken from the Web pages.

Providing quality search results is complicated by several factors. First, a given search query can often be expressed in multiple forms based on the individual terms, which constitute the search query. For instance, a particular term may have synonyms, alternate spellings, share a common root form, or have a semantic meaning similar to other words. Likewise, a particular term may share a conceptual meaning with other related words. Moreover, an individual term could be part of a compound term, which, when combined with one or more other terms, may also have multiple forms.

In addition, the choice of terms selected by a user submitting a search query can affect search result quality. A user may simply fail to realize the scope of the search and could provide a set of individual terms that inadvertently limit the search to a portion of potentially responsive results. Similarly, the user could possess a limited vocabulary due to, for instance, an unfamiliarity with the subject matter of the search, and consequently poorly frame or even mischaracterize the query. Finally, the user might misunderstand the techniques employed by a particular search engine and provide terms that are ill-suited to the search engine.

Accordingly, there is a need for an approach to broadening a search query. Broadening search characteristics may be used, such as synonyms, alternate spellings, terms that share a common root form, or have a semantic meaning similar to other words, as well as search characteristics that share a conceptual meaning with other related words. The broadened search scope can result in increased search quality.

There is a further need for an approach to providing a user interface presenting broadened search queries. In one example, individual search characteristics occurring as part of a compound term would be identified and considered when providing one or more broadening search characteristics. Such broadened search characteristics may be flexibly presented to the user in multiple display formats.

DISCLOSURE OF INVENTION

An embodiment provides a system and method for providing a user interface with search query broadening. A query defining a search executable on potentially retrievable information is accepted. The query is parsed. A broadened query is provided. At least one of the broadened query and results of a search executed on the broadened query is presented.

Still other embodiments of the present invention will become readily apparent to those skilled in the art from the following detailed description, wherein are described embodiments of the invention by way of illustrating the best mode contemplated for carrying out the invention. As will be realized, the invention is capable of other and different embodiments and its several details are capable of modifications in various obvious respects, all without departing from the spirit and the scope of the present invention. Accordingly, the drawings and detailed description are to be regarded as illustrative in nature and not as restrictive.

DESCRIPTION OF DRAWINGS

FIGURE 1 is a block diagram showing a system for providing a user interface with search query broadening, in accordance with the present invention.

FIGURE 2 is a block diagram showing a computer system for use in the system of FIGURE 1.

FIGURES 3A-3B are diagrams showing, by way of example, a search query presented relative to broadened search characteristics determined in accordance with the present invention.

FIGURE 4 is a screen shot showing, by way of example, a Web page containing search results retrieved through broadened search characteristics.

FIGURE 5 is a flow diagram showing a method for providing a user interface with search query broadening, in accordance with the present invention.

FIGURE 6 is a flow diagram showing a routine for broadening a query for use in the method of FIGURE 5.

FIGURE 7 is a flow diagram showing a routine for presenting a broadened query for use in the method of FIGURE 5.

BEST MODE FOR CARRYING OUT THE INVENTION

FIGURE 1 is a block diagram showing a system 10 for providing a user interface with search query broadening, in accordance with the present invention. A plurality of individual clients 12 are communicatively interfaced to a server 11 via an internetwork 13, such as the Internet, or other form of communications network, as would be recognized by one skilled in the art. The individual clients 12 are operated by users 19 who transact requests for Web content and other operations through their respective client 12.

In general, each client 12 can be any form of computing platform connectable to a network, such as the internetwork 13, and capable of interacting with application programs. Exemplary examples of individual clients include, without limitation, personal computers, digital assistances, “smart” cellular telephones and pagers, lightweight clients, workstations, “dumb” terminals interfaced to an application server, and various arrangements and configurations thereof, as would be recognized by one skilled in the art. The internetwork 13 includes various topologies, configurations, and arrangements of network interconnectivity components arranged to interoperatively couple with enterprise, wide area and local area networks and include, without limitation, conventionally wired, wireless, satellite, optical, and equivalent network technologies, as would be recognized by one skilled in the art.

For Web content exchange and, in particular, to transact searches, each client 12 executes a Web browser 18 (“Web browser”), which preferably implements a graphical user interface and through which search queries are sent to a Web server 20 executing on the server 11, as further described below with reference to FIGURE 2. Each search query describes or identifies information, generally in the form of Web content, which is potentially retrievable via the Web server 20. The search query provides search characteristics, typically expressed as individual terms, such as keywords and the like, and attributes, such as language, character encoding and so forth, which enables a search engine 21, also executing on the server 11, to identify and send back Web pages. Other styles, forms or definitions of search queries and characteristics are feasible, as would be recognized by one skilled in the art.

The Web pages are sent back to the Web browser 18 for presentation, usually in the form of Web content titles, hyperlinks, and other descriptive information, such as snippets of text taken from the Web pages. The user can view or access the Web pages on the graphical user interface and can input selections and responses in the form of typed text, clicks, or both. The server 11 maintains an attached storage device 15 in which Web content 22 is maintained. The Web content 22 could also be maintained remotely on other Web servers (not shown) interconnected either directly or indirectly via the internetwork 13 and which are preferably accessible by each client 12.

The search engine 21 preferably identifies the Web content 22 best matching the search characteristics to provide high quality Web pages, such as described in S. Brin and L. Page, “The Anatomy of a Large-Scale Hypertextual Search Engine” (1998) and in U.S. Patent No. 6,285,999, issued September 4, 2001 to Page, the disclosures of which are incorporated by reference. In identifying matching Web content 22, the search engine 21 operates on information characteristics describing potentially retrievable Web content, as further described below with

reference to FIGURE 2. Note the functionality provided by the server 20, including the Web server 20 and search engine 21, could be provided by a loosely- or tightly-coupled distributed or parallelized computing configuration, in addition to a uniprocessing environment.

The individual computer systems, including server 11 and clients 12, include general purpose, programmed digital computing devices consisting of a central processing unit (processors 13 and 16, respectively), random access memory (memories 14 and 17, respectively), non-volatile secondary storage 15, such as a hard drive or CD ROM drive, network or wireless interfaces, and peripheral devices, including user interfacing means, such as a keyboard and display. Program code, including software programs, and data is loaded into the RAM for execution and processing by the CPU and results are generated for display, output, transmittal, or storage. The Web browser 18 is an HTTP-compatible Web browser, such as the Internet Explorer, licensed by Microsoft Corporation, Redmond, WA; Navigator, licensed by Netscape Corporation, Mountain View, CA; or a Mozilla or JavaScript enabled browser, as are known in the art.

FIGURE 2 is a block diagram showing a computer system 30 for use in the system 10 of FIGURE 1. The computer system 30 includes a processor 31 and visual display 32, such as a computer monitor or liquid crystal diode (LCD) display, as are known in the art. The computer system 30 executes a Web browser 18 (shown in FIGURE 1), which preferably implements a graphical user interface 37. Visual Web content is output within a display area defined on the graphical user interface 37 while user inputs are generally input both within the display area and within specified user input regions. Textual user inputs are received via a keyboard 33. Linear, non-textual inputs are received via an optional pointing device 34, such as a mouse, trackball, track pad, or arrow keys. Similarly, voice- and sound-based inputs are received via a microphone 35. Visual outputs are displayed via the graphical user interface 37 on the visual display 32, while audio outputs are played on the speakers 36. In particular, search queries are entered as user inputs and each search query is dynamically broadened, as further described below with reference to FIGURE 6. The broadened search terms can be presented, generally as visual Web content, as further described below with reference to FIGURE 7, and executed. Other forms of computer components, including processor 31, visual display 32, and input and output devices could be used, as would be recognized by one skilled in the art.

FIGURES 3A-3B are diagrams showing, by way of example, a search query 40 presented relative to broadened search characteristics, such as query terms 43, 44, determined in accordance with the present invention. The example search query 40 constitutes a list of the individual terms 41 consisting of "car," "repair," and "help." One or more of the individual

terms 41 are broadened to enable the search engine 21 generate search results using a query framed more loosely or broadly than with the original unbroadened terms 41.

“Broadening” refers to modifying the scope of the search query 40, such that the search results reflect an increased breadth, rather than a narrowing, limiting, or otherwise restricting of the search scope. Broadening can include modifying, replacing, supplementing, removing, or otherwise restating one or more search characteristics, such as terms 41, but need not be so limited. Search characteristics include query terms, concepts and other forms of information specified in or derivable from a query to help identify the content sought. Broadening can also include rewriting or modifying the query 40 either in whole or in part. As an example, broadening can include providing synonyms, alternate spellings, common root forms, or terms having a similar semantic meaning or terms sharing a conceptual meaning. In addition, broadening can include altering the query scope through query modification, such as by excluding a broadened term in an initial search and evaluating the search results relative to the excluded term using categorical or clustered distinctions. Broadening can also include, for example, determining a semantic or conceptual meaning of a query, or one or more search characteristics in a query, and broadening the query based on related semantic or conceptual meanings; such broadening may, but need not, be performed using related search characteristics. Consequently, broadening encompasses analyzing the query 40 and introducing changes to effect broader search result scope and increased search quality.

By way of example, in a simplest form, one or more words related to at least one of the original terms 41 could be disjunctively added to the original query 40. The search engine 21 would then execute the expanded query using the broadened list of terms. For instance, the individual term 41 of “car” could be supplemented with “vehicle” and the search engine 21 would execute a search on a query consisting of the terms “car,” “vehicle,” “repair,” and “help.”

By way of further example, the search engine 21 could initially execute a query, which excludes an original term 41, and map the search results into categories of related terms associated with the excluded original term 41. For instance, the individual term 41 of “help” could be excluded and the search engine 21 would execute a search on a query consisting only of the terms “car” and “repair.” The search engine 21 would then map the resultant search results into specific categories of related terms associated with the term of “help.” Alternatively, the search engine 21 could form clusters of search results, rather than mapping the search results into categories. Clusters group search results at a conceptual level, whereas categories group at a literal level of related terms.

The foregoing approaches to broadening the original terms 41 are provided merely as examples of broadening techniques and are not meant to limit or restrict the scope of the invention. Other broadening techniques could be used in addition to or in combinations with the foregoing techniques, which can be selected and combined in various arrangements, as would be
5 recognized by one skilled in the art.

Referring first to FIGURE 3A, the individual term 41 of "car" has been broadened to include the list of broadened terms 43 consisting of "cars," "autos," and "auto." Each of the sample broadened terms have been selected from a set of words having a synonymous, alternate spelling, common root, or similar semantic meaning, although other selections of broadened
10 terms could be used in addition to or in combination with the foregoing words set, which can be selected and combined in various styles and arrangements, as would be recognized by one skilled in the art.

Referring next to FIGURE 3B, the individual term 41 of "help" has been broadened to include the list of broadened terms 44 consisting of "guide," "tips," "tutorial," and "problem."
15 Each of the sample broadened terms have been selected from a set of words having a related conceptual meaning, although other selections of broadened terms could be used in addition to or in combination with the foregoing words set, which can be selected and combined in various styles and arrangements, as would be recognized by one skilled in the art.

In a further embodiment, each individual term 41 being broadened could be provided as a
20 hyperlink, either with or without the broadened terms list 43, 44. In list form, each broadened term 43, 44 forms a part of the broadened query upon selection by the user. In non-list form, each selected term 41 is broadened upon selection by the user.

In a further embodiment (not shown), individual terms 41 are logically grouped with one or more other individual terms 41 to form a compound term and a set of broadened terms is
25 determined for the compound term. For example, the term 41 of "hot" followed by the term of "dog" could be logically grouped to form the compound term "hot dog" and a list of broadened terms could include the term 41 of "hamburger," "wiener," and "sausage." Other forms of identifying and combining individual terms 41 to logically form compound and complex terms are possible, as would be recognized by one skilled in the art.

Both broadened terms lists 43, 44 are presented as a static list, although other forms of
30 presentation, including a menu of selectable terms, a list of selectable terms, a set of checkboxes, and a set of hyperlinks corresponding to each broadened term, either with or without a broadened terms list, could be used, as would be recognized by one skilled in the art. Note that such a user interface allowing selection of one or more choices may also be employed to restrict or focus

queries, as opposed to broadening queries. For example, from a query containing the term “vegetarian,” the choices “ovo lacto,” “lacto” and “vegan” may be generated, and a user may be allowed to select one or more of the choices to focus an original query.

Finally, a “select all” option 42 is provided supplemental to the individual terms list 41.

5 Selection of the “select all” option 42 triggers the selection of each of the broadened terms lists 43, 44, although other forms of full or partial broadened terms selection are possible, as would be recognized by one skilled in the art.

FIGURE 4 is a screen shot showing, by way of example, a Web page 50 containing search results 52 retrieved through broadened search characteristics. The search query
10 constitutes a list of individual terms 41 consisting of “car,” “repair,” and “help.” The example search results 52 match the list of terms consisting of “auto,” “guide,” and “problems,” reflecting a broadening of the terms 41 of “car” and “help.” An operator ‘~’ is prepended to the terms “car” and “help” to expressly request query broadening with respect to the indicated terms. Optionally, a delimiter, such as the ‘\’ character, can be provided with the operator ‘~’ to signal
15 an ordinary meaning with respect to the operator. For example, the term “\~car” would signal that the term should be treated by the search engine 21 as consisting of “~car” without query broadening.

In a further embodiment, every search characteristic, including term 41, in a search query
40 could be automatically broadened by including at least one occurrence of the operator within
20 the search query 40.

In a further embodiment, the use of an operator is optional and search query broadening is instead requested through the use of hyperlinks associated with one or more individual search characteristics, including terms 41. Thus, a search characteristic would be broadened upon selection of the associated hyperlink by the user. Other forms of operators and delimiters are
25 possible, as would be recognized by one skilled in the art.

In a further embodiment, the use of the operator ‘~’ includes an assignable strength, which could be, for example, indicated through repetition of the operator or through the use of alternative operators. For example, the term 41 of “~~help” appearing with two occurrences of the operator ‘~’ would indicate that the term 41 should be broadened further than indicated by
30 the occurrence of a single operator ‘~.’ The types of further broadening include broadening based on categories or clusters of related search characteristics, as well as other forms of broadening, as are known in the art. In addition, other types and forms of operators to indicate an assignable strength are possible, as would be recognized by one skilled in the art.

FIGURE 5 is a flow diagram showing a method 40 for providing a user interface with search query broadening, in accordance with the present invention. The method 40 is described as a sequence of process operations or steps, which can be executed, for instance, by a search engine 21 (shown in FIGURE 1).

5 A search query 40 is accepted from a user 19 and parsed into individual search characteristics (block 61). The search query 40 is broadened (block 62), as further described below with reference to FIGURE 6. For example, one or more of the search characteristics in the search query 40 could be broadened. If specified (block 63), the broadened search query is then presented to the user 19 (block 64), as further described below with reference to FIGURE 7.

10 Following any further query modifications by the user 19, the query is executed (block 65) to identify Web content 22 best matching the search characteristics, such as described in S. Brin and L. Page, "The Anatomy of a Large-Scale Hypertextual Search Engine" (1998) and in U.S. Patent No. 6,285,999, issued September 6, 2001 to Page, referenced above. Other types and forms of query execution are possible, as is known in the art. Finally, the search results 52 are

15 presented via the browser 18 (block 66). Typically, only a part of the search results 52 need be presented since the full set of search results 52 can exceed available presentation space on the browser 18. The method then terminates.

FIGURE 6 is a flow diagram showing a routine 70 for broadening a query for use in the method of FIGURE 5. The purpose of this routine is to identify, broaden and provide a

20 broadened search query 40, such as by broadening individual search characteristics occurring in a search query 40, including query terms 41.

Each search characteristic in the search query 40 is iteratively processed (blocks 71-77) as follows, although other forms of non-iterative processing are possible, as would be recognized by one skilled in the art. Each search characteristic is evaluated to determine if an operator

25 expressly requesting query broadening, such as an operator '~,' is included (block 72). If no operator is included, the search characteristic is not broadened and the next search characteristic is processed (block 77). If an operator is included, the search characteristic is further evaluated to determine if a delimiter signaling ordinary meaning with respect to the operator is included (block 73). If a delimiter is included, the search characteristic is not broadened and the next

30 search characteristic is processed (block 77). If no delimiter is included, the search characteristic is evaluated to determine if the search characteristic should be logically grouped with one or more other search characteristics in the search query 40 to form a compound search characteristic (block 74). If the search characteristic should not be logically grouped, broadening search characteristics are provided for just the individual search characteristic (block 75). Otherwise, if

the search characteristic should be logically grouped, broadening search characteristics are provided for the compound search characteristic (block 76).

In the described embodiment, the set of broadening search characteristics are generated by receiving one or more example search characteristics corresponding to each search characteristic to be broadened. Weights are assigned to each example search characteristic and a list of broadened search characteristics is formed based on the example search characteristics and the weights assigned to each example search characteristic, such as described in related U.S. Patent application Serial No. 10/425,819, filed April 30, 2003, pending, the disclosure of which is incorporated by reference. Other approaches to generating the broadening search characteristics set are possible, as would be recognized by one skilled in the art.

Note other approaches to broadening could be used to modify the scope of the search query 40, such that the search results reflect an increased breadth, rather than a narrowing, limiting, or otherwise restricting of the search scope, as described above with reference to FIGURES 3A-3B. Following search query broadening (blocks 75 and 76), the next search characteristic is processed (block 77), after which the routine returns.

FIGURE 7 is a flow diagram showing a routine 60 for presenting a broadened query for use in the method of FIGURE 5. The purpose of this routine is to flexibly present the set of broadened search characteristics to the user relative to the set of search characteristics from the original search query 40.

Each search characteristic in the search query, both original and broadened, is iteratively processed (blocks 81-94) as follows, although other forms of non-iterative processing are possible, as would be recognized by one skilled in the art. If a hyperlink presentation form is desired (block 82), the search characteristic is presented as a hyperlink (block 83), either with or without a broadened search characteristics list. In list form, each broadened search characteristic forms a part of the broadened query upon selection by the user. In non-list form, each selected search characteristic is broadened upon selection by the user. If a static list presentation form is desired (block 84), the search characteristic is presented as part of a static list (block 84). If a menu presentation form is desired (block 86), the search characteristic is presented as part of a menu of selectable search characteristics (block 84) and the search characteristic forms a part of the broadened query upon selection by the user. If a selectable list presentation form is desired (block 88), the search characteristic is presented as part of a list of selectable search characteristics (block 89) and the search characteristic forms a part of the broadened query upon selection by the user. If a checkbox list presentation form is desired (block 90), each broadened search characteristic is presented as part of a list of checkbox selectable search characteristics

(block 92) and the search characteristic forms a part of the broadened query upon selection by the user. Finally, if a “select all” option is included (block 92), a “select all” option is presented (block 93). Alternative forms of presentation and selection can be provided in addition to or in combination with the foregoing presentation forms, which can be selected and combined in various arrangements, as would be recognized by one skilled in the art. In addition, the broadened query need not necessarily be presented to the user and the broadened search results could be provided transparently without first presenting the broadened search characteristics. Following presentation form selection (blocks 82, 84, 86, 88, 90), the next search characteristic 41 is processed (block 94), after which the routine returns.

While the invention has been particularly shown and described as referenced to the embodiments thereof, those skilled in the art will understand that the foregoing and other changes in form and detail may be made therein without departing from the spirit and scope of the invention.

CLAIMS:

- 1 1. A system (10) for providing a user interface (37) with search
2 query broadening, comprising:
3 an input module accepting a query (40) defining a search executable on
4 potentially retrievable information (22) and parsing the query (40);
5 a query broadening module providing a broadened query (40); and
6 a presentation module presenting at least one of the broadened query
7 (40) and results of a search (52) executed on the broadened query (40).
- 1 2. A system (10) according to Claim 1, wherein providing the
2 broadened query (40) comprises at least one of determining a meaning for at
3 least a portion of the query (40) and determining a related concept (44) based
4 on the meaning.
- 1 3. A system (10) according to Claim 1, further comprising:
2 an evaluation module providing at least one broadened search
3 characteristic (41) to the broadened query (40).
- 1 4. A system (10) according to Claim 1, further comprising:
2 an evaluation module performing at least one of modifying, replacing,
3 supplementing, removing, or restating the at least one search characteristic
4 (41).
- 1 5. A system (10) according to Claim 1, further comprising:
2 a selection module selecting at least one broadening search
3 characteristic (41) from at least one of a set of words having a synonymous,
4 alternate spelling, common root, or similar semantic meaning and a set of
5 words having a related conceptual meaning.
- 1 6. A system (10) according to Claim 1, further comprising:
2 an operator provided with at least one broadening search characteristic
3 (41) to request query broadening.
- 1 7. A system (10) according to Claim 6, further comprising:
2 a delimiter provided with the operator to signal ordinary meaning with
3 respect to the operator.

1 8. A system (10) according to Claim 1, wherein the query (40)
2 comprises a plurality of search characteristics (41), further comprising:
3 a grouping module logically grouping at least two of the search
4 characteristics (41) into a compound search characteristic (41), wherein the
5 query (40) broadening module provides at least one broadening search
6 characteristic (41) for the compound search characteristic (41).

1 9. A system (10) according to Claim 1, further comprising:
2 a hyperlink module presenting at least one search characteristic (41) in
3 the broadened query (40) as a hyperlink, wherein the query broadening
4 module forms the broadened query (40) comprising the at least one search
5 characteristic (41) responsive to a selection of the hyperlink.

1 10. A system (10) according to Claim 9, further comprising:
2 a display module displaying the broadened query (40) as a static list
3 responsive to a highlighting of the hyperlink.

1 11. A system (10) according to Claim 9, wherein the hyperlink
2 module presents an option triggering selection of each such search
3 characteristic (41) in the broadened query (40) as a hyperlink.

1 12. A system (10) according to Claim 1, wherein the presentation
2 module presents at least one search characteristic (41) in the broadened query
3 (40) as at least one of a static list, a menu of selectable search characteristics
4 (41), a set of checkboxes, and a list of selectable search characteristics (41).

1 13. A system (10) according to Claim 1, wherein the presentation
2 module presents an option triggering selection of each such search
3 characteristic (41) in the broadened query (40).

1 14. A system (10) according to Claim 1, further comprising:
2 a query engine executing the broadened query (40).

1 15. A system (10) according to Claim 1, further comprising:
2 a graphical user interface (37) interfacing the input module, the query
3 broadening module, and the presentation module.

1 16. A method (60) for providing a user interface (37) with search
2 query broadening, comprising:
3 accepting a query (40) defining a search executable on potentially
4 retrievable information (22) and parsing the query (40);
5 providing a broadened query (40); and
6 presenting at least one of the broadened query (40) and results of a
7 search (52) executed on the broadened query (40).

1 17. A method (60) according to Claim 16, further comprising:
2 providing the broadened query (40) comprises at least one of
3 determining a meaning for at least a portion of the query (40) and determining
4 a related concept (44) based on the meaning.

1 18. A method (60) according to Claim 16, further comprising:
2 providing at least one broadened search characteristic (41) to the
3 broadened query (40).

1 19. A method (60) according to Claim 16, further comprising:
2 performing at least one of modifying, replacing, supplementing,
3 removing, or restating the at least one search characteristic (41).

1 20. A method (60) according to Claim 16, further comprising:
2 selecting at least one broadening search characteristic (41) from at least
3 one of a set of words having a synonymous, alternate spelling, common root,
4 or similar semantic meaning and a set of words having a related conceptual
5 meaning.

1 21. A method (60) according to Claim 16, further comprising:
2 providing an operator with at least one broadening search characteristic
3 (41) to request query broadening.

1 22. A method (60) according to Claim 21, further comprising:
2 providing a delimiter with the operator to signal ordinary meaning with
3 respect to the operator.

1 23. A method (60) according to Claim 16, wherein the query (40)
2 comprises a plurality of search characteristics (41), further comprising:
3 logically grouping at least two of the search characteristics (41) into a
4 compound search characteristic (41); and
5 providing at least one broadening search characteristic (41) for the
6 compound search characteristic (41).

1 24. A method (60) according to Claim 16, further comprising:
2 presenting at least one search characteristic (41) in the broadened
3 query (40) as a hyperlink; and
4 forming the broadened query (40) comprising the at least one search
5 characteristic (41) responsive to a selection of the hyperlink.

1 25. A method (60) according to Claim 24, further comprising:
2 displaying the broadened query (40) as a static list responsive to a
3 highlighting of the hyperlink.

1 26. A method (60) according to Claim 24, further comprising:
2 presenting an option triggering selection of each such search
3 characteristic (41) in the broadened query (40) as a hyperlink.

1 27. A method (60) according to Claim 16, further comprising:
2 presenting at least one search characteristic (41) in the broadened
3 query (40) as at least one of a static list, a menu of selectable search
4 characteristics (41), a set of checkboxes, and a list of selectable search
5 characteristics (41).

1 28. A method (60) according to Claim 16, further comprising:
2 presenting an option triggering selection of each such search
3 characteristic (41) in the broadened query (40).

1 29. A method (60) according to Claim 16, further comprising:
2 executing the broadened query (40).

1 30. A method (60) according to Claim 16, further comprising:

2 providing a graphical user interface (37) interfacing the input module,
3 the query broadening module, and the presentation module.

1 31. A computer-readable storage medium holding code for
2 performing the method (60) according to Claim 16.

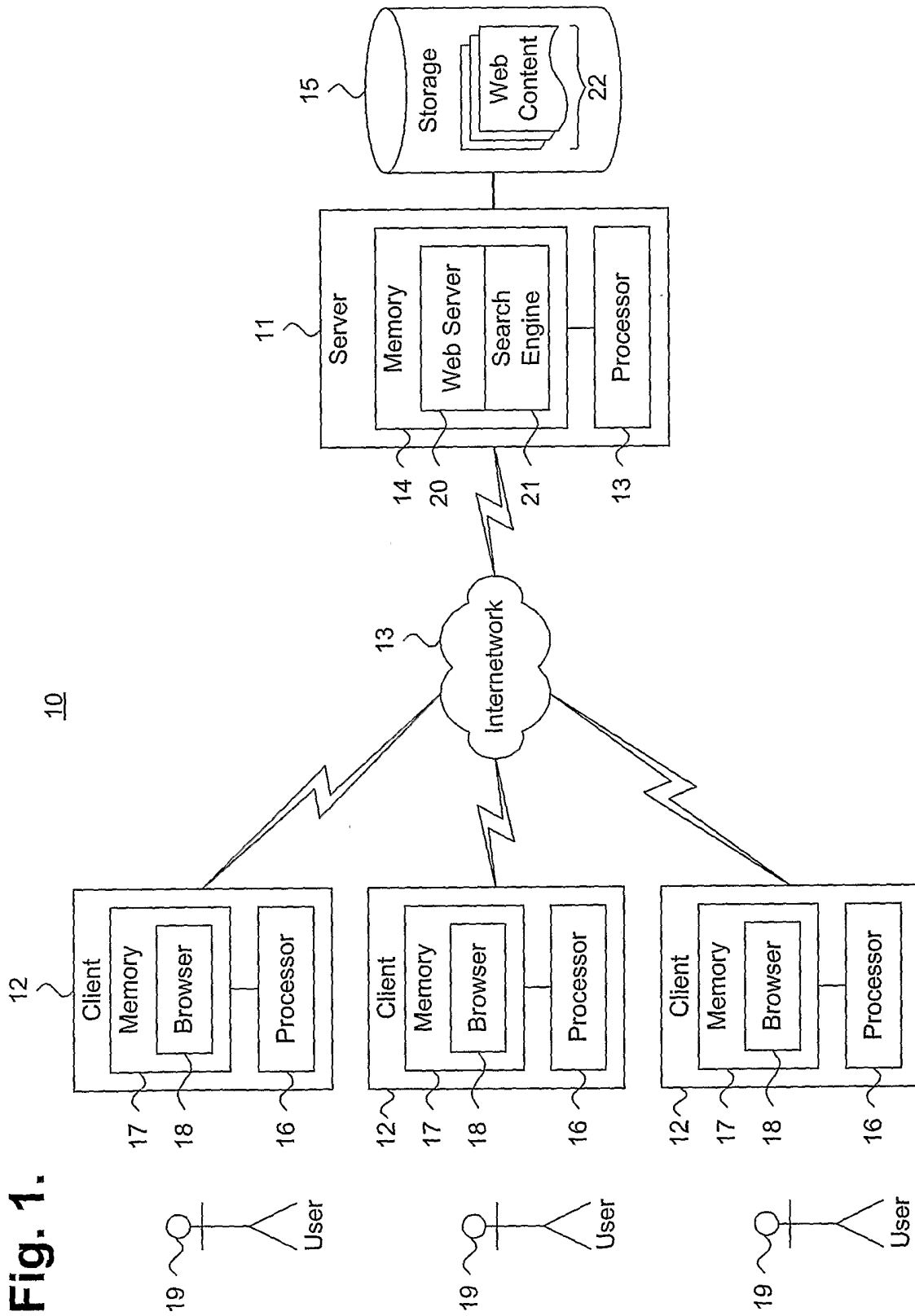


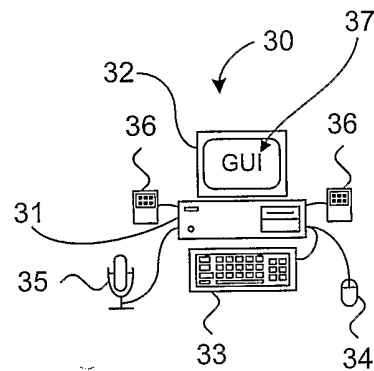
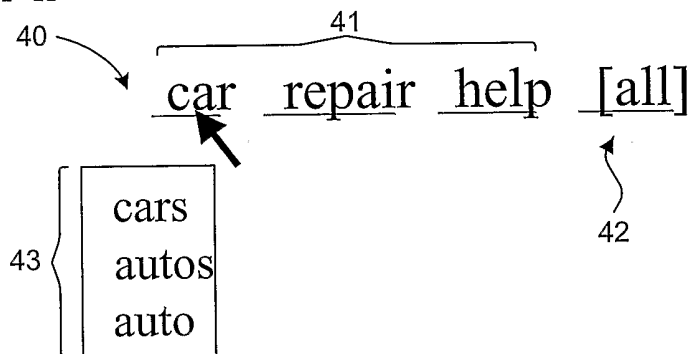
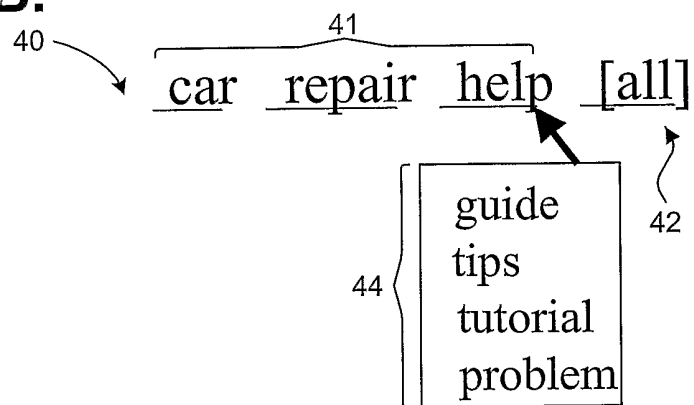
Fig. 2.**Fig. 3A.****Fig. 3B.**

Fig. 4.

50

51

Google

Advanced Search Preferences Language Tools Search Tips

-car repair ~help Google Search

Web Images Groups Directory News

Searched the web for -car repair ~help Results 1 - 10 of about 2,140,000 Search took 0.27 seconds

Auto Repair at About.com With your Guide Vince Ciulla
and you will also receive the popular Automobile of the Vehicles issue, and the New Car issue structured training programs for aspiring auto technicians, NASCAR autorepair about.com/ - 37k - [Cached](#)

Auto Repair at About.com With your Guide Vince Ciulla
summer yet and I'm seeing cars come in Utility Vehicles issue, and the New Car issue provides structured training programs for aspiring auto technicians, NASCAR autorepair about.com/body.htm - 42k - [Cached](#)
[More results from autorepair.about.com]

Yahoo! Autos - Repair Guide
autos.yahoo.com/repair/tree/0.html - 6k - [Cached](#)

ASE Certified Automobile Technicians provide advice on common car...
AUTO REPAIR ADVICE, REPAIR ADVICE, AUTOMOBILE REPAIR REPAIR MECHANIC, ASE Certified Automobile Technicians provide advice on common car problems and individual consultations
Description ASE Certified Automobile Technicians provide advice on common car problems and individual consultations
Category Recreation > Autos > Repair
www.autorepairadvisors.com/ - 3k - [Cached](#)

BBB - Car Repair
a diagnosis, unless you are trained in auto repair and know are injured while waiting in their cars, or trying to with the repair job, return your car to the
Description Tips for avoiding repairs, dealing with car repair shops, having your car towed, and avoiding scams
Category Recreation > Autos > Repair
www.bbb.org/library/tips/car.asp - 29k - [Cached](#)

Auto Repair Interactive Guide
Auto Repair Interactive Guide proudly hosted at Lunar Videos specific to your car Automotive service excellence, Also Included Some basic diagnostic information
Description Auto maintenance videos custom-made for vehicles
Category Shopping > Tools > Vehicle Repair
www.autorepaircd.com/ - 10k - [Cached](#)

www.autosite.com/garage/subsys/repair.asp

www.autosite.com/garage/garmenu.asp

AUTOSHOP-Online!
the Master Technician rating from makers like BMW, Chevrolet, Chrysler to one of our five car-line teams with a huge collection of automotive reference materials
Description The United States' largest independent car and truck repair helpline Through Autoshop Online you
Category Recreation > Autos > Repair
www.autoshop-online.com/ - 6k - [Cached](#)

AUTO REPAIR - Software To Troubleshoot and Diagnose Car Problems ...
Our CD, will help in your auto related repair jobs This software covers many cars and will assist you in automotive repairing of most systems Car problems solved
www.metacog.com/ - 7k - [Cached](#)

Sponsored Links

Car Repair
Training Available Near You!
Request No-Risk Info from Westwood Westwood college-info.org
Interest

Garage & Mechanic Check
Make sure your Garage and Mechanic run a clean business operation
www.choiceatrust.com
Interest

Auto Repair Parts
1A Auto carries an extensive line of aftermarket auto repair parts
www.1aauto.com
Interest
[See your message here](#)

52

Google

Result Page 1 2 3 4 5 6 7 8 9 10 Next

-car repair ~help Google Search Search within results

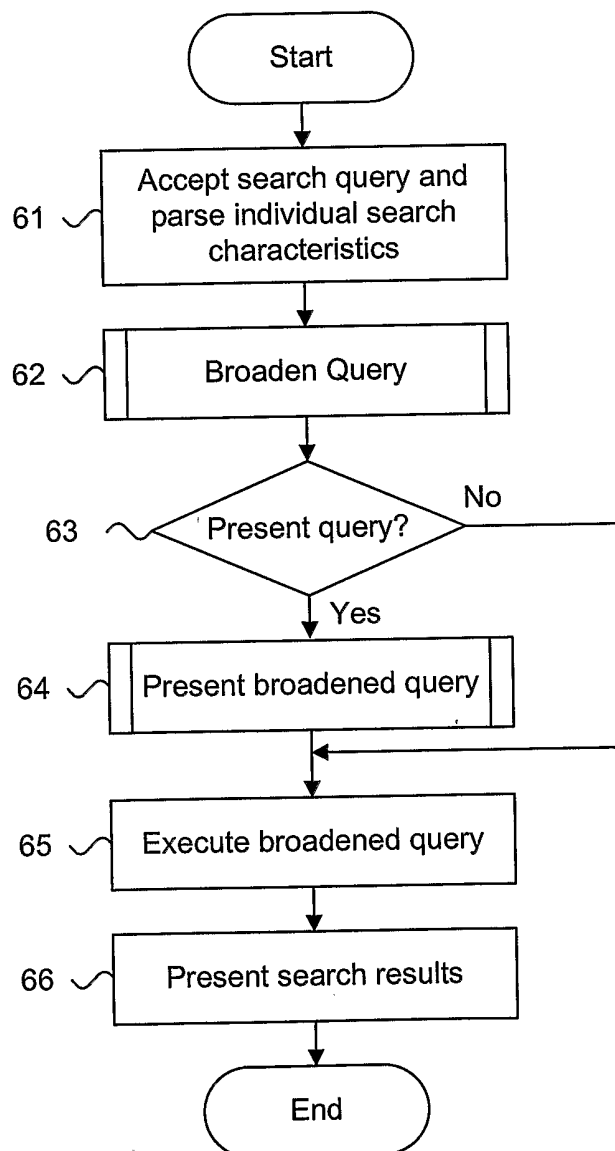
Fig. 5.60

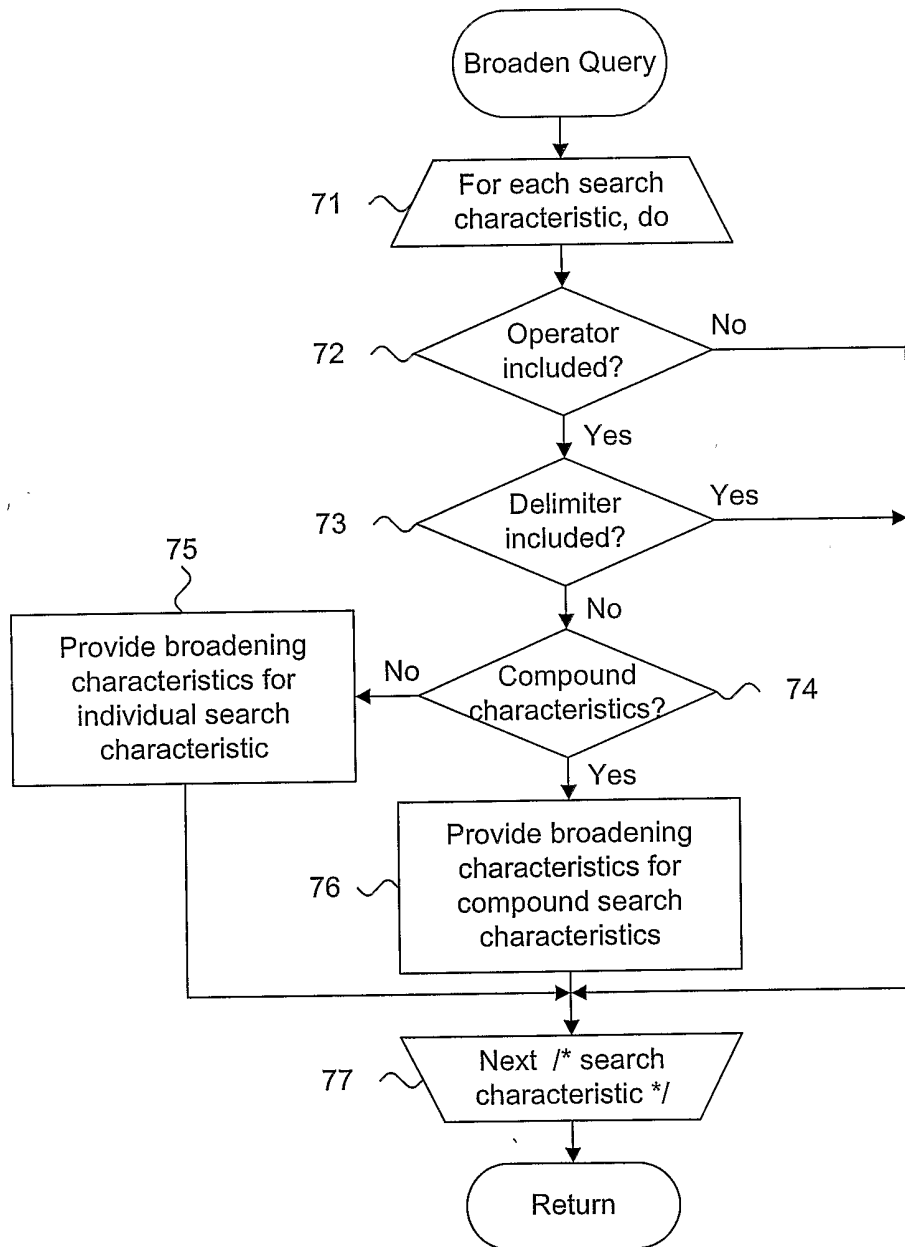
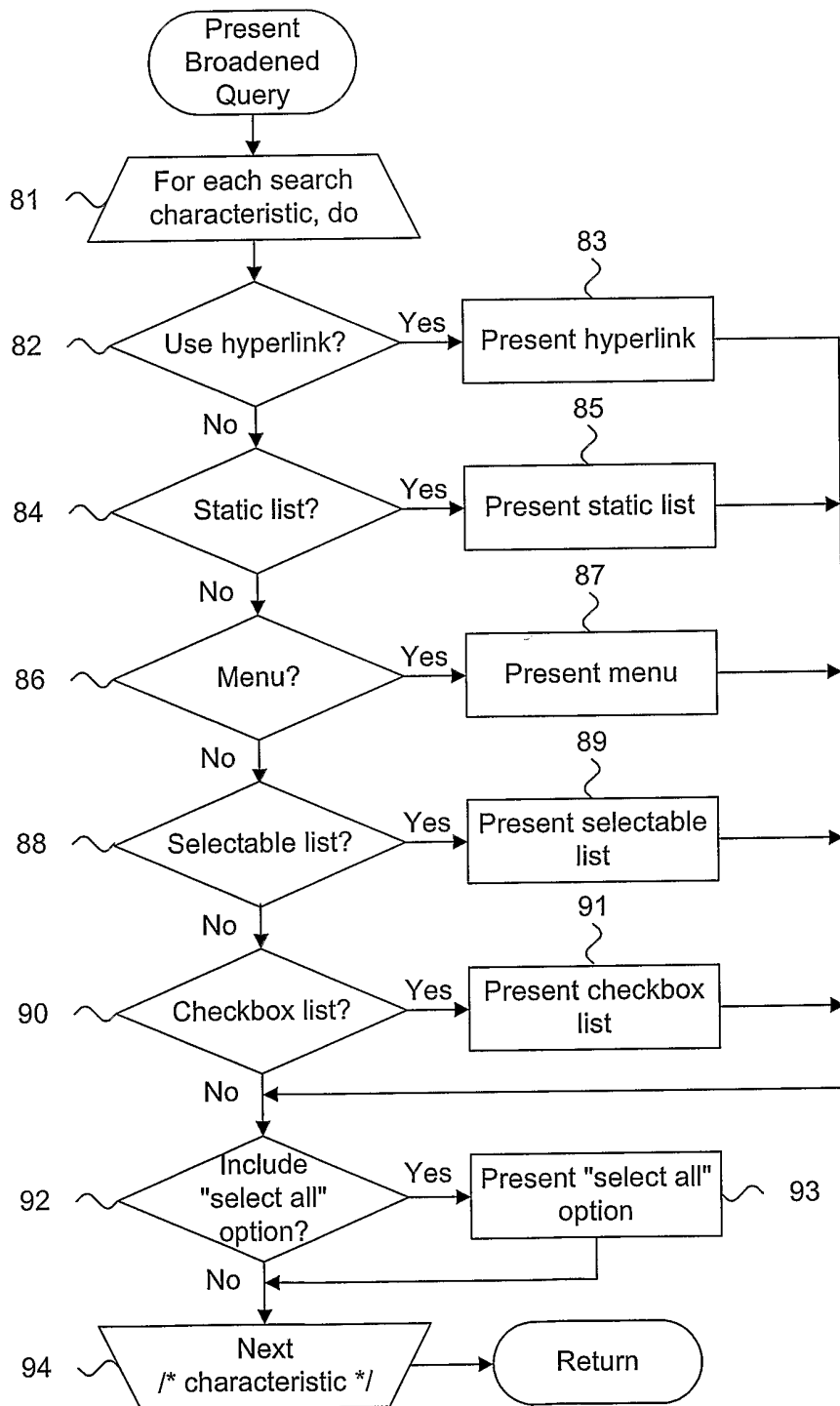
Fig. 6.70

Fig. 7.80

INTERNATIONAL SEARCH REPORT

International Application No

PCT/US2004/024306

A. CLASSIFICATION OF SUBJECT MATTER

IPC 7 G06F17/30

According to International Patent Classification (IPC) or to both national classification and IPC

B. FIELDS SEARCHED

Minimum documentation searched (classification system followed by classification symbols)

IPC 7 G06F

Documentation searched other than minimum documentation to the extent that such documents are included in the fields searched

Electronic data base consulted during the international search (name of data base and, where practical, search terms used)

EPO-Internal, WPI Data, INSPEC

C. DOCUMENTS CONSIDERED TO BE RELEVANT

Category *	Citation of document, with indication, where appropriate, of the relevant passages	Relevant to claim No.
X	WO 00/79436 A (SIMPLI COM ; STIBEL JEFFREY M (US)) 28 December 2000 (2000-12-28) abstract page 3, line 20 - page 5, line 15 page 7, line 25 - page 12, line 11 page 13, line 13 - page 13, line 28 page 15, line 19 - page 16, line 13 page 18, line 24 - page 20, line 12 ----- -/--	1-31

☒ Further documents are listed in the continuation of box C.☒ Patent family members are listed in annex.

* Special categories of cited documents :

- *A* document defining the general state of the art which is not considered to be of particular relevance
- *E* earlier document but published on or after the international filing date
- *L* document which may throw doubts on priority claim(s) or which is cited to establish the publication date of another citation or other special reason (as specified)
- *O* document referring to an oral disclosure, use, exhibition or other means
- *P* document published prior to the international filing date but later than the priority date claimed

- *T* later document published after the international filing date or priority date and not in conflict with the application but cited to understand the principle or theory underlying the invention
- *X* document of particular relevance; the claimed invention cannot be considered novel or cannot be considered to involve an inventive step when the document is taken alone
- *Y* document of particular relevance; the claimed invention cannot be considered to involve an inventive step when the document is combined with one or more other such documents, such combination being obvious to a person skilled in the art.
- *&* document member of the same patent family

Date of the actual completion of the international search

17 November 2004

Date of mailing of the international search report

29/11/2004

Name and mailing address of the ISA

European Patent Office, P.B. 5818 Patentlaan 2
 NL - 2280 HV Rijswijk
 Tel. (+31-70) 340-2040, Tx. 31 651 epo nl,
 Fax: (+31-70) 340-3016

Authorized officer

Boyadzhiev, Y

INTERNATIONAL SEARCH REPORT

International Application No
PCT/US2004/024306

C.(Continuation) DOCUMENTS CONSIDERED TO BE RELEVANT

Category *	Citation of document, with indication, where appropriate, of the relevant passages	Relevant to claim No.
X	<p>GERL M ET AL: "Knowledge discovery for automatic query expansion on the World Wide Web"</p> <p>ADVANCES IN CONCEPTUAL MODELING. ER'99 WORKSHOP ON EVOLUTION AND CHANGE IN DATA MANAGEMENT, REVERSE ENGINEERING IN INFORMATION SYSTEMS, AND THE WORLD WIDE WEB AND CONCEPTUAL MODELING. PROCEEDINGS (LECTURE NOTES IN COMPUTER SCIENCE VOL.1727) SPRINGER-, 15 November 1999 (1999-11-15), pages 334-347, XP002305936 ISBN: 3-540-66653-2 abstract page 334, line 1 - page 335, line 41 page 336, line 39 - page 337, line 36 page 339, line 4 - page 339, line 22 page 341, line 39 - page 342, line 11 page 343, line 5 - page 344, line 15</p>	1-3,5, 14-18, 29-31
A	<p>BRIN S ET AL: "The anatomy of a large-scale hypertextual Web search engine"</p> <p>COMPUTER NETWORKS AND ISDN SYSTEMS, NORTH HOLLAND PUBLISHING. AMSTERDAM, NL, vol. 30, no. 1-7, 1 April 1998 (1998-04-01), pages 107-117, XP004121435 ISSN: 0169-7552 cited in the application abstract page 110, right-hand column, line 1 - page 110, right-hand column, line 31 page 111, left-hand column, line 37 - page 112, left-hand column, line 13 page 113, right-hand column, line 26 - page 113, right-hand column, line 46</p>	1-31
A	<p>US 5 953 718 A (WICAL KELLY) 14 September 1999 (1999-09-14) abstract column 3, line 66 - column 5, line 34 column 6, line 61 - column 7, line 49 column 9, line 35 - column 11, line 22 column 13, line 66 - column 15, line 25 column 18, line 47 - column 19, line 19</p>	1-31

INTERNATIONAL SEARCH REPORT

Information on patent family members

International Application No
PCT/US2004/024306

Patent document cited in search report		Publication date		Patent family member(s)	Publication date
WO 0079436	A	28-12-2000	AU WO	6200300 A 0079436 A2	09-01-2001 28-12-2000
US 5953718	A	14-09-1999	NONE		