



US007401072B2

(12) **United States Patent**  
**Piscitello et al.**

(10) **Patent No.:** **US 7,401,072 B2**  
(45) **Date of Patent:** **Jul. 15, 2008**

- (54) **NAMED URL ENTRY**
- (75) Inventors: **John Piscitello**, San Francisco, CA (US); **Xuefu Wang**, Sunnyvale, CA (US); **Simon Tong**, Mountain View, CA (US); **Breen Hagan**, Cupertho, CA (US)
- (73) Assignee: **Google Inc.**, Mountain View, CA (US)
- (\* ) Notice: Subject to any disclaimer, the term of this patent is extended or adjusted under 35 U.S.C. 154(b) by 297 days.

5,764,906 A	6/1998	Edelstein et al.	
5,873,107 A	2/1999	Borovoy et al.	715/501.1
5,983,220 A	11/1999	Schmitt	
6,006,225 A	12/1999	Bowman et al.	707/5
6,012,053 A *	1/2000	Pant et al.	707/3
6,151,624 A	11/2000	Teare et al.	
6,285,999 B1	9/2001	Page	707/5
6,356,908 B1	3/2002	Brown et al.	
6,499,029 B1	12/2002	Kurapati et al.	707/5
6,564,208 B1	5/2003	Littlefield et al.	707/3

(Continued)

(21) Appl. No.: **10/953,497**

**FOREIGN PATENT DOCUMENTS**

(22) Filed: **Sep. 30, 2004**

EP 1 283 482 A2 2/2003

(65) **Prior Publication Data**

(Continued)

US 2005/0240576 A1 Oct. 27, 2005

**OTHER PUBLICATIONS**

**Related U.S. Application Data**

Brin, et al., "The Anatomy of a Large-Scale Hypertextual Web Search Engine," Computer Science Department, Stanford University, 1998, 20 pages.

(63) Continuation-in-part of application No. 10/457,488, filed on Jun. 10, 2003.

(Continued)

(60) Provisional application No. 60/587,548, filed on Jul. 14, 2004.

*Primary Examiner*—Doug Hutton  
*Assistant Examiner*—Nathan Hillery  
(74) *Attorney, Agent, or Firm*—Harrity Snyder, LLP

(51) **Int. Cl.**  
**G06F 15/00** (2006.01)  
**G06F 17/00** (2006.01)

(57) **ABSTRACT**

(52) **U.S. Cl.** ..... **707/3; 707/4; 707/5; 707/6; 715/243; 715/273**

Methods and systems allow users to enter natural language terms that describe a particular web site into an address field of a browser instead of a formal URL. The terms are evaluated to determine whether they correspond, with a high likelihood, to a particular web site. If so, this web site may be immediately accessed. If not, a list of search results based on the terms may be displayed by the browser.

(58) **Field of Classification Search** ..... **715/500; 707/3-6**

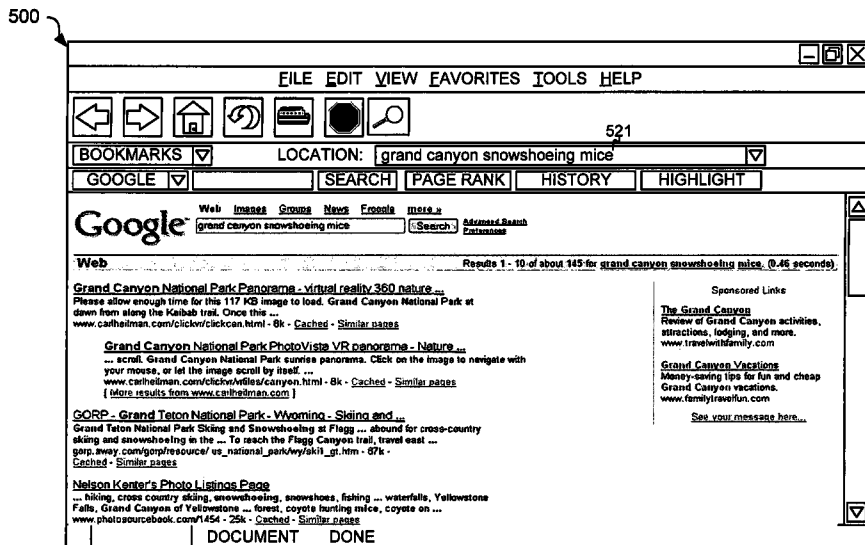
See application file for complete search history.

(56) **References Cited**

**U.S. PATENT DOCUMENTS**

5,659,732 A 8/1997 Kirsch ..... 707/5

**27 Claims, 9 Drawing Sheets**



# US 7,401,072 B2

Page 2

---

## U.S. PATENT DOCUMENTS

6,571,239 B1 5/2003 Cole et al. .... 707/5  
6,601,061 B1 7/2003 Holt et al. .... 707/3  
6,640,218 B1\* 10/2003 Golding et al. .... 707/2  
2002/0059192 A1 5/2002 Ling  
2002/0065802 A1 5/2002 Uchiyama ..... 707/1  
2003/0050927 A1 3/2003 Hussam ..... 707/5  
2003/0055816 A1 3/2003 Paine et al. .... 707/3  
2003/0126461 A1\* 7/2003 Barker et al. .... 713/200

2003/0236701 A1\* 12/2003 Rowney et al. .... 705/14

## FOREIGN PATENT DOCUMENTS

WO 99/39280 8/1999

## OTHER PUBLICATIONS

Armstrong, et al., "WebWatcher: A Learning Apprentice for the World Wide Web," School of Computer Science, Carnegie Mellon University, 1995, 7 pages.

\* cited by examiner

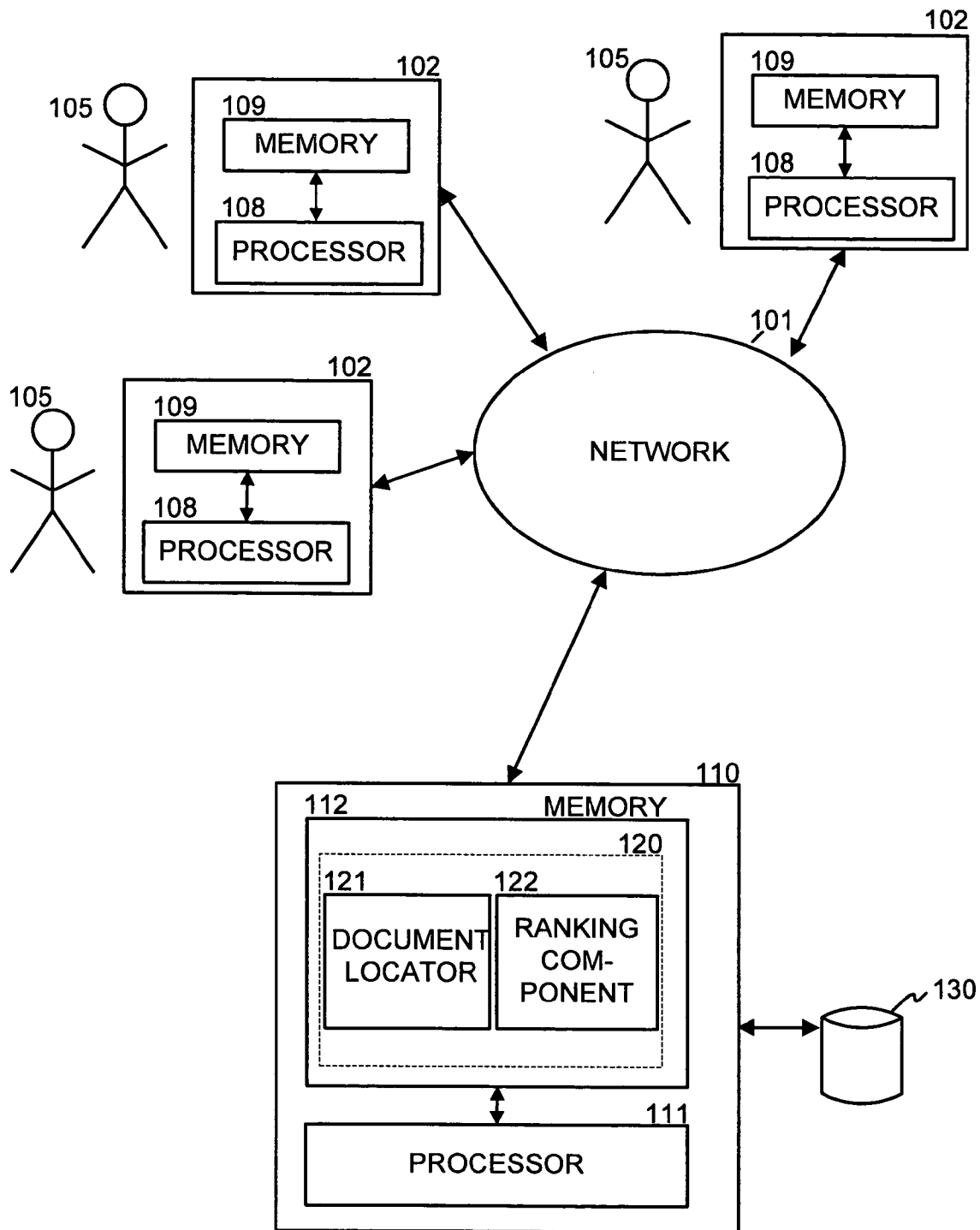


Fig. 1

Google™

Advanced Search Preferences Language Tools Search Tips

200

stanford Google Search

201

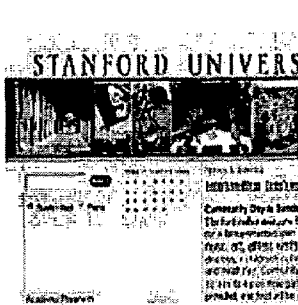
Web · Images · Groups · Directory · News ·

Searched the web for stanford.

Results 1 - 10 of about 6,280,000. Search took 0.22 seconds.

Categories: Regional > North America > ... Regional > North America > ... > South Bay > Education ~ 215

News: Stanford Super Regional notes - ESPN - 1 hour ago  
Students end Stanford fast - San Jose Mercury News - Jun 5, 2003  
Draft laps Cal, Stanford - San Francisco Chronicle - Jun 4, 2003  
Try Google News: Search news for stanford or browse the latest headlines } 216



Stanford University  
The Stanford University's homepage allows you to find web resources and websites. Pictures of Stanford University. Stanford Web People. ... Admission. About Stanford. } 220  
Description: Stanford University  
Category: Regional > North America > ... ~ 221  
[www.stanford.edu/](http://www.stanford.edu/) - 38k - Cached - Similar pages

The Martin Luther King, Jr. Papers Project ~ 211

Martin Luther King, Jr. Speaks Out on War and Peace. Nonviolence is not sterile passivity, but a powerful moral force which makes for social transformation. ...  
Description: Secondary documents written about Martin Luther King, Jr., as well as primary documents written during...  
Category: Society > History > ... > Personas > King, Martin Luther, Jr.  
[www.stanford.edu/group/King/](http://www.stanford.edu/group/King/) - 15k - Cached - Similar pages  
[ More results from www.stanford.edu ]

Stanford Encyclopedia of Philosophy ~ 212

Stanford Encyclopedia of Philosophy. Edited by Edward N. Zalta Editorial Information. [Link ... Principal Site: USA Stanford University. Mirror ...  
Description: Online philosophy reference work, articles are authored and updated by experts in the field. Edited...  
Category: Society > Philosophy > ... > Stanford Encyclopedia of Philosophy  
[plato.stanford.edu/](http://plato.stanford.edu/) - 3k - Cached - Similar pages

Stanford Encyclopedia of Philosophy Table of Contents (Abridged) ~ 213

Stanford Encyclopedia of Philosophy Abridged Table of Contents. Welcome to the Stanford Encyclopedia of Philosophy, which was designed ...  
Description: Dynamic, evolving philosophy reference. Articles include bibliographies for further reading.  
Category: Reference > Encyclopedias > Subject Encyclopedias > Philosophy  
[plato.stanford.edu/contents.html](http://plato.stanford.edu/contents.html) - 101k - Cached - Similar pages  
[ More results from plato.stanford.edu ]

SUL: Copyright & Fair Use ~ 214

Welcome to [fairuse.stanford.edu](http://fairuse.stanford.edu). ... Fair Use Copyright Reminder from Stanford Provost Condoleezza Rice, October 30, 1998 (superseded). ...  
Description: A very good starting place built by the Stanford University.  
Category: Arts > Music > Resources > Copyright  
[fairuse.stanford.edu/](http://fairuse.stanford.edu/) - 6k - Cached - Similar pages

Fig. 2

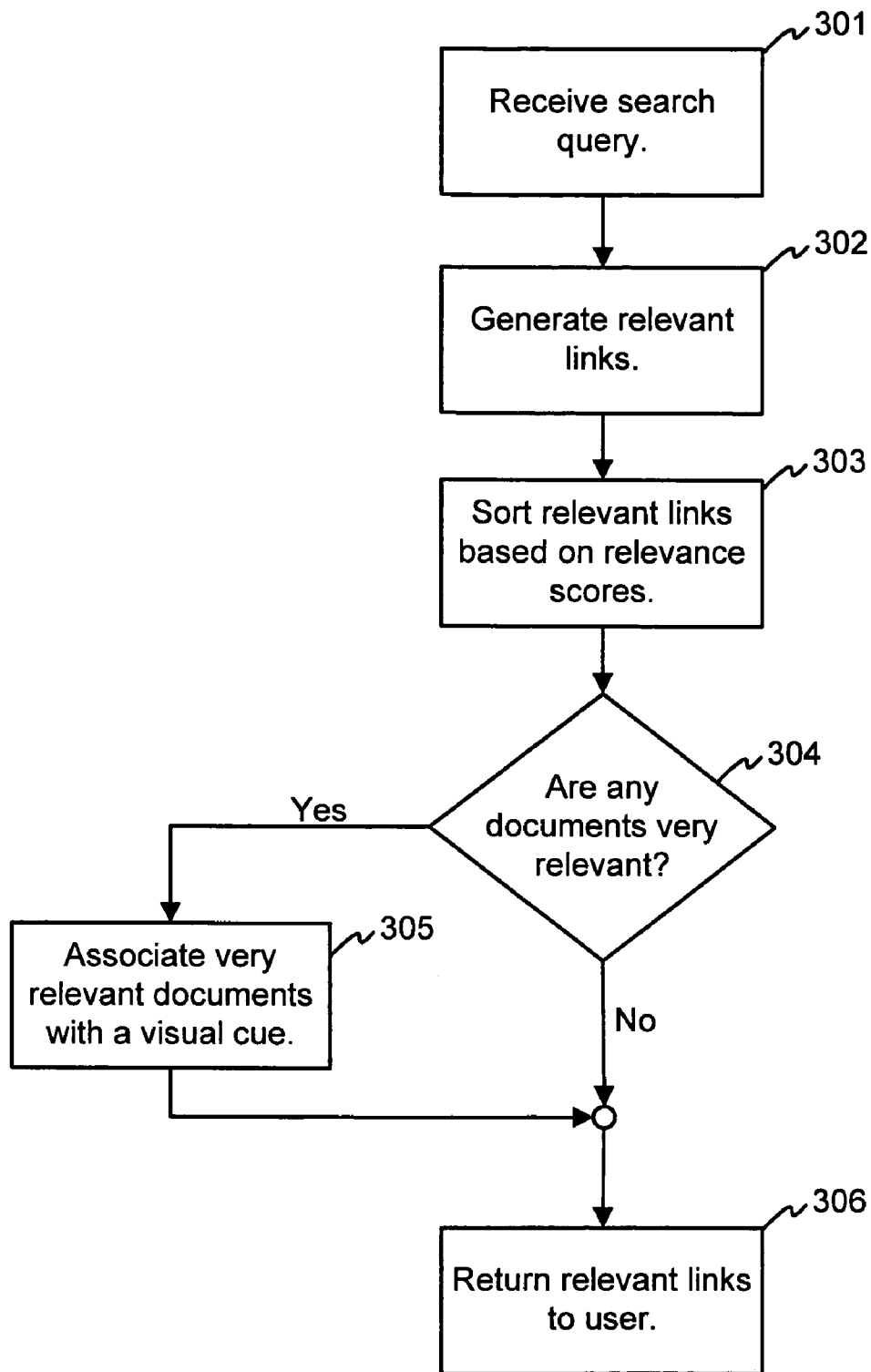


Fig. 3

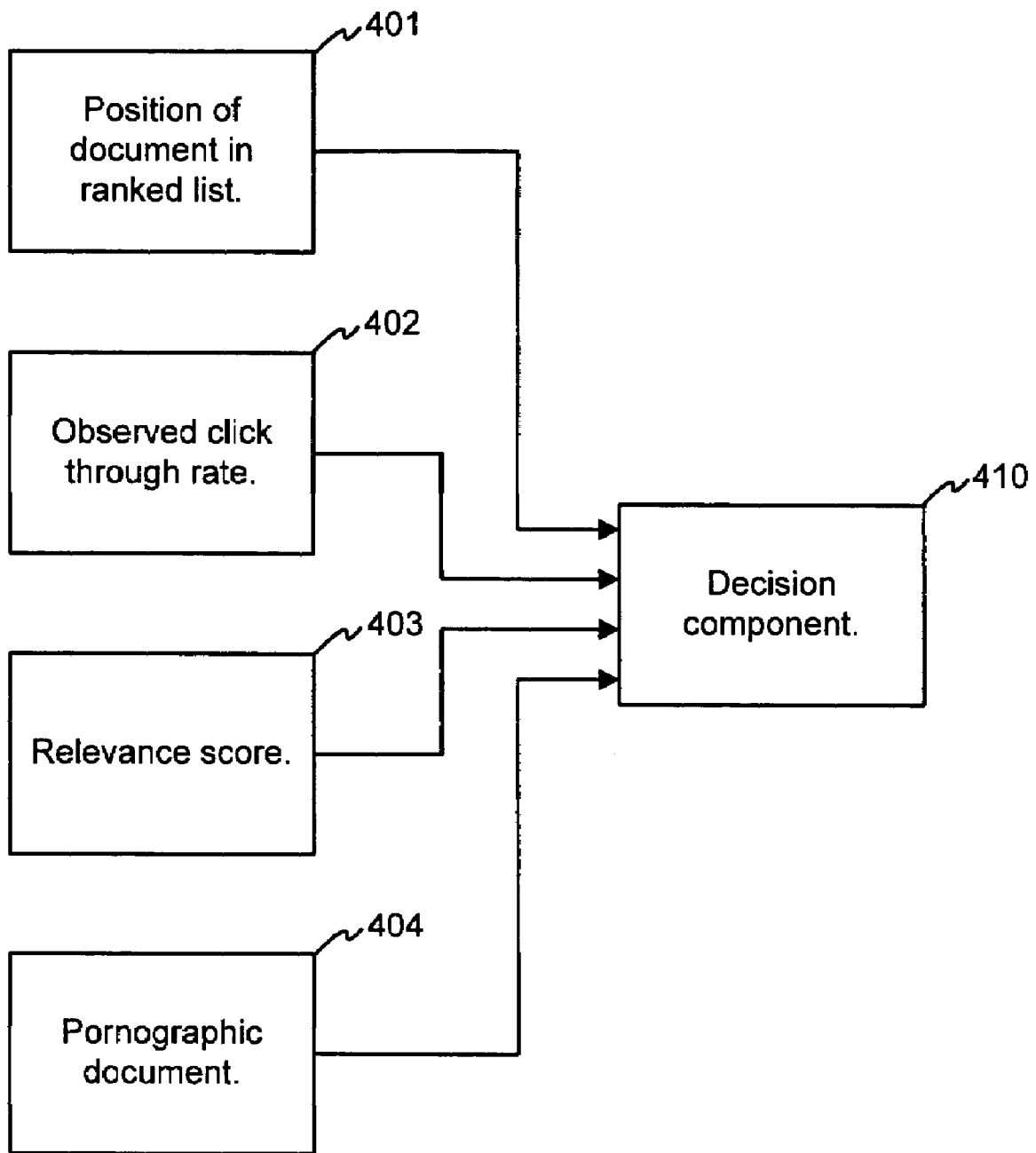


Fig. 4

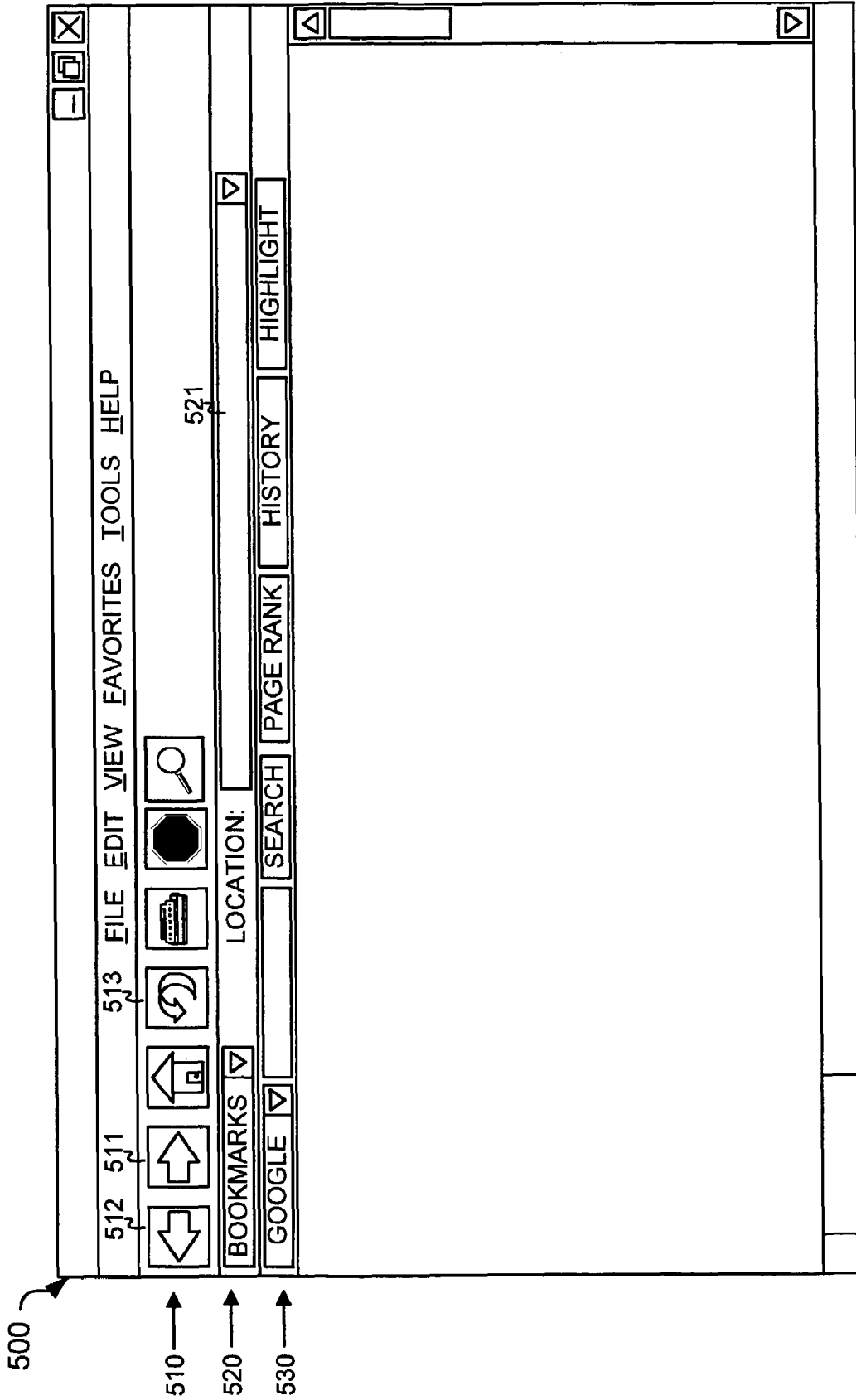


Fig. 5

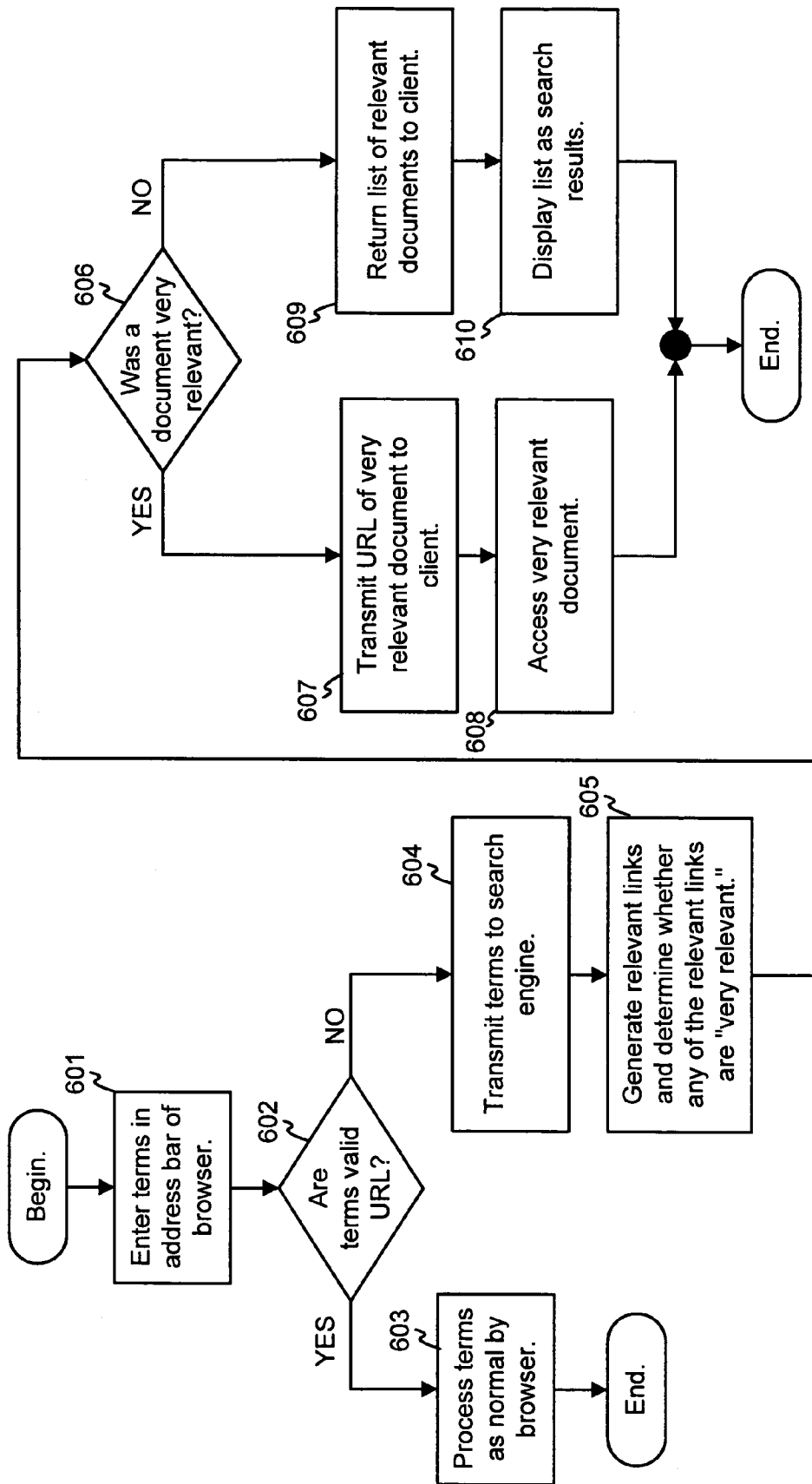


Fig. 6A

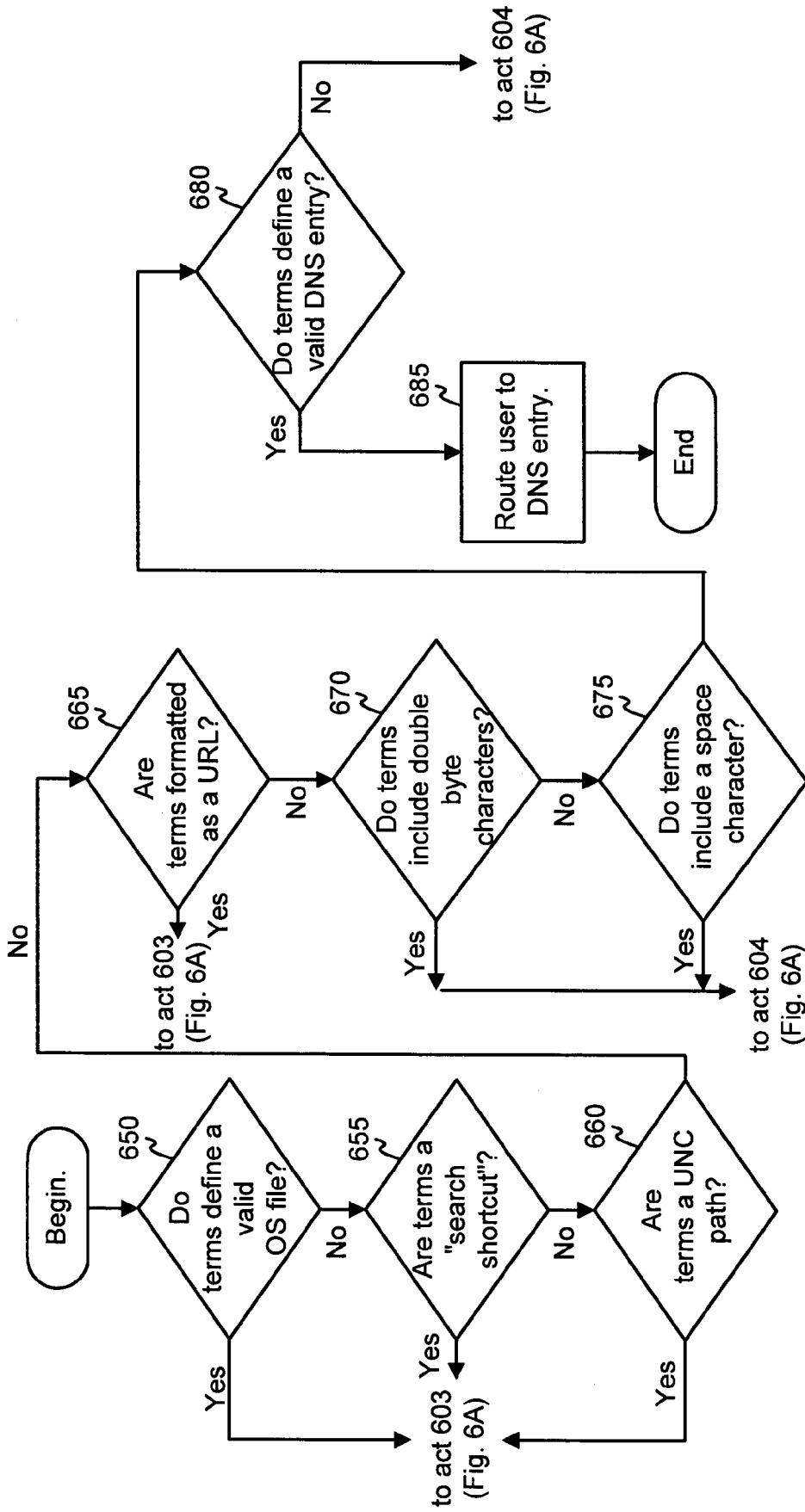


Fig. 6B

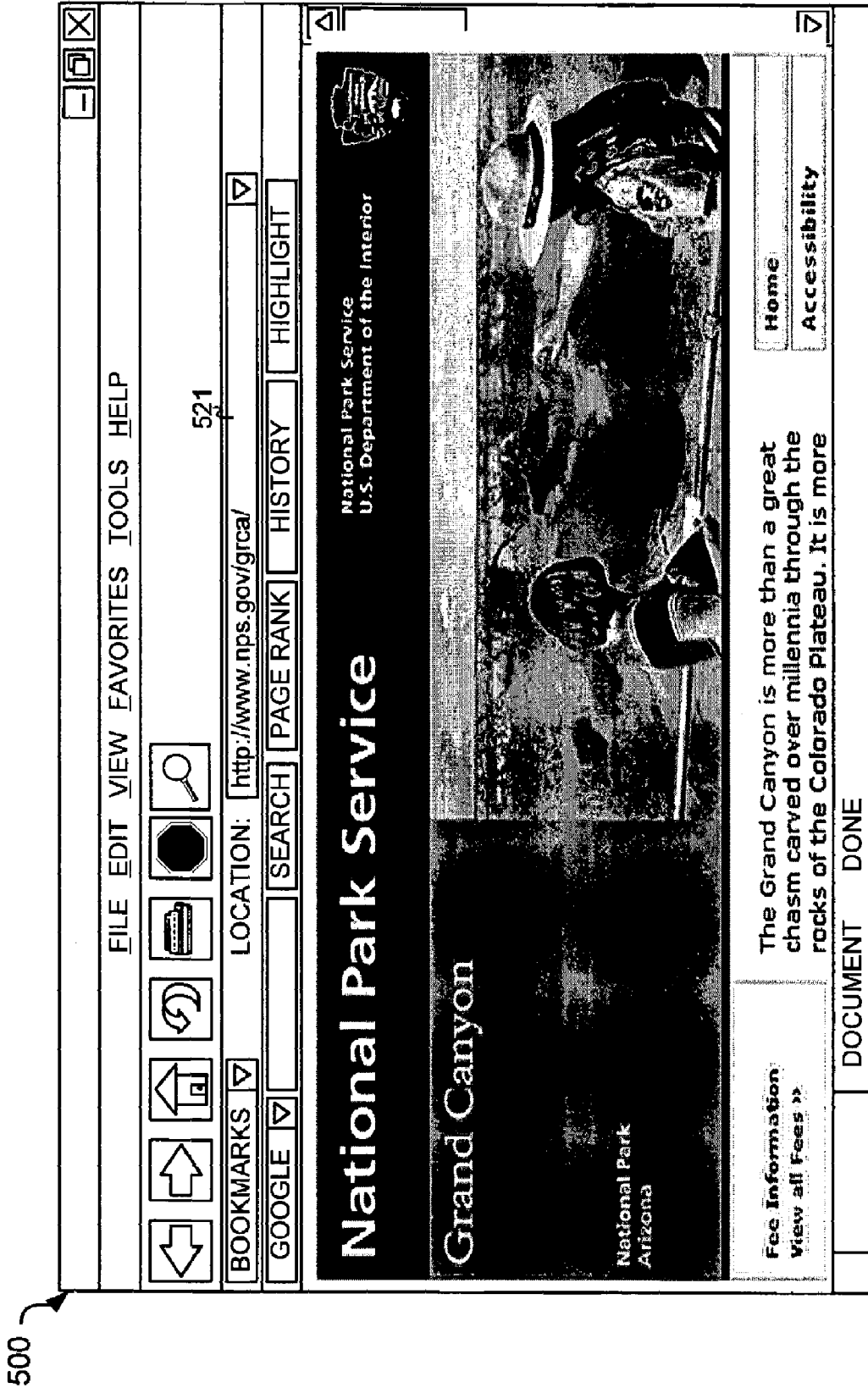


Fig. 7

500

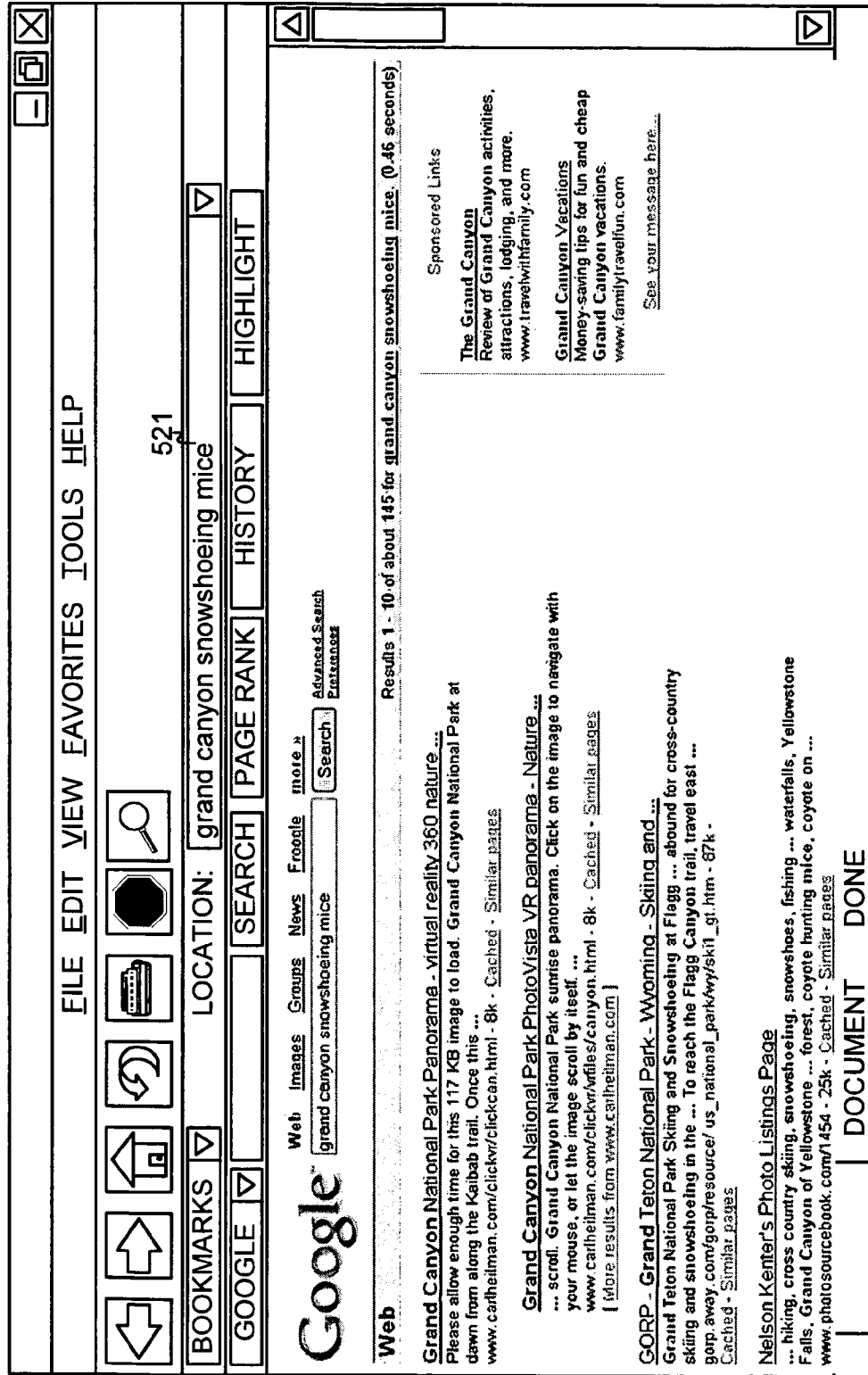


Fig. 8

# 1

## NAMED URL ENTRY

### RELATED APPLICATIONS

This application claims priority under 35 U.S.C. § 119 based on U.S. Provisional Application No. 60/587,548, filed Jul. 14, 2004, and is a continuation-in-part of U.S. patent application Ser. No. 10/457,488, filed Jun. 10, 2003, and entitled "DOCUMENT SEARCH ENGINE INCLUDING HIGHLIGHTING OF CONFIDENT RESULTS," the disclosures of both of which are incorporated herein by reference.

### BACKGROUND

#### A. Field of the Invention

Implementations consistent with the principles of the present invention relate generally to document browsing and searching and, more particularly, to using a search engine to assist in document browsing.

#### B. Description of Related Art

The World Wide Web ("web") contains a vast amount of information. Locating a desired portion of the information, however, can be challenging. This problem is compounded because the amount of information on the web and the number of new users inexperienced at web searching are growing rapidly.

When navigating the web, users often type in uniform resource locators (URLs) that refer to a particular web document that they wish to access. URLs often must be entered as an exact pre-defined string that correspond to the web document. This can be inconvenient and unwieldy for the user.

### SUMMARY

One aspect is a method that includes receiving one or more terms by a browser and initiating a search based on the terms to obtain search results. The method further includes displaying, when the search results includes a very relevant result, a document corresponding to the very relevant result. The method also includes displaying, when the search results do not include a very relevant result, links to a number of documents corresponding to the search results.

Another aspect is directed to a computer-readable medium containing programming instructions to be executed by one or more processors. The computer-readable medium includes instructions for implementing a search toolbar in a browser that includes an address toolbar, the search toolbar modifying functionality of the address toolbar by enabling the address toolbar to accept double byte characters. The computer-readable medium also includes instructions for transmitting terms entered into the address toolbar to a search engine and instructions for receiving search results from the search engine. Further, the computer-readable medium includes instructions for displaying in the browser, when the search result includes a very relevant result, a document corresponding to the very relevant result; and instructions for displaying in the browser, when the search result does not include a very relevant result, links to documents corresponding to the search results.

Another aspect is a method that includes receiving a search query from a user and performing a search of a document database based on the search query to obtain at least one relevant document link. The method further includes determining whether the at least one relevant document link is likely to correspond to a particular document that the user is attempting to access. The method further includes returning a link to the particular document to the user for immediate display of the particular document to the user when it is

# 2

determined that one of the at least one relevant document links is likely to correspond to the particular document that the user is attempting to access. Still further, the method includes returning a plurality of relevant documents links for display to the user when it is not determined that one of the at least one relevant document links is likely to correspond to the particular document that the user is attempting to access.

### BRIEF DESCRIPTION OF THE DRAWINGS

The accompanying drawings, which are incorporated in and constitute a part of this specification, illustrate the invention and, together with the description, explain the invention. In the drawings,

FIG. 1 is a diagram illustrating an exemplary system in which concepts consistent with the present invention may be implemented;

FIG. 2 is a diagram illustrating a document that includes links to web documents displayed in response to a search query;

FIG. 3 is a flow chart illustrating operation of a search engine consistent with an aspect of the invention;

FIG. 4 is a block diagram conceptually illustrating the determination of whether a document is very relevant to a user search query;

FIG. 5 is an exemplary diagram of a graphical user interface of a web browser;

FIG. 6A is a flowchart illustrating operations of a search engine and client consistent with an aspect of the invention;

FIG. 6B is a flowchart illustrating exemplary operations for determining whether terms entered by the user are a valid URL; and

FIGS. 7 and 8 are exemplary diagrams of a graphical user interface associated with a web browser.

### DETAILED DESCRIPTION

The following detailed description of the invention refers to the accompanying drawings. The detailed description does not limit the invention. Instead, the scope of the invention is defined by the appended claims and equivalents.

#### Overview

Traditionally, when navigating to a web site, users may either select from a previously set list of "bookmarks" or type a URL or other predetermined phrase into the address bar of their browser. Consistent with aspects of the invention described below, users may also enter a natural language search query. For example, to visit the home pages of the companies IBM or Lands End, the user may simply enter "ibm" or "lands end," instead of "www.ibm.com" or "www.landsend.com." If a determination is able to be made, with acceptable certainty, that the user intended to visit a particular site, the user will be taken directly to that site.

#### System Overview

FIG. 1 is a diagram illustrating an exemplary system in which concepts consistent with the present invention may be implemented. The system includes multiple client devices 102, a server device 110, and a network 101, which may include, for example, the Internet. Client devices 102 each include a computer-readable memory 109, such as random access memory, coupled to a processor 108. Processor 108 executes program instructions stored in memory 109. Client devices 102 may also include a number of additional external

or internal devices, such as, without limitation, a mouse, a CD-ROM, a keyboard, and a display.

Through client devices **102**, users **105** can communicate over network **101** with each other and with other systems and devices coupled to network **101**, such as server device **110**.

Similar to client devices **102**, server device **110** may include a processor **111** coupled to a computer-readable memory **112**. Server device **110** may additionally include a secondary storage element, such as database **130**.

Client processors **108** and server processor **111** can be any of a number of well known computer processors. In general, client device **102** may be any type of computing platform connected to a network and that interacts with application programs, such as a digital assistant or a "smart" cellular telephone or pager. Server **110**, although depicted as a single computer system, may be implemented as a network of computer processors.

Memory **112** contains a search engine program **120**. Search engine program **120** locates relevant information in response to search queries from users **105**. In particular, users **105** send search queries to server device **110**, which responds by returning a list of relevant information to user **105**. Typically, users **105** ask server device **110** to locate web pages relating to a particular topic and stored at other devices or systems connected to network **101**. Search engine **120** includes document locator **121** and a ranking component **122**. In general, document locator **121** finds a set of documents whose contents match a user search query. Ranking component **122** may rank the located set of documents based on relevance and may generate a relevance score for each document that indicates a level of relevance. Search engine **120** may then return a list of links pointing to the set of documents determined by document locator **121**. The list of links may be sorted based on the relevance scores determined by ranking component **122**.

Document locator **121** may initially locate documents from a document corpus stored in database **130** by comparing the terms in the user's search query to the documents in the corpus. In general, processes for indexing web documents and searching the indexed corpus of web documents to return a set of documents containing the searched terms are well known in the art. Accordingly, this functionality of document locator **121** will not be described further herein.

Ranking component **122** assists search engine **120** in returning relevant documents to the user by ranking the set of documents identified by document locator **121**. This ranking may take the form of assigning a numerical value, called a relevance score, corresponding to the calculated relevance of each document identified by document locator **121**. Alternatively, the functions of ranking component **122** and document locator **121** may be combined so that document locator **121** produces a set of relevant documents each having rank values.

As used herein, a document is to be broadly interpreted to include any machine-readable and machine-storable work product. A document may be an email, a file, a combination of files, one or more files with embedded links to other files, etc. In the context of the Internet, a common document is a Web page. Web pages often include content and may include embedded information (such as meta information, hyperlinks, etc.) and/or embedded instructions (such as Javascript, etc.).

### Operation of Search Engine **120**

Consistent with an aspect of the invention, links to sets of web documents returned by search engine **120** may include, in addition to text snippets that describe the web documents, a visual cue that informs the user that the web document is

likely to be relevant to the user's search query. The visual cue may include graphic information through which the user can quickly and easily verify whether the link is the link that the user intended to locate. In one aspect of the invention, the link corresponding to a document that is determined to be "highly relevant" (i.e., a high confidence that the document is the document that the user would be most interested in viewing) to the user search query is displayed with the visual cue.

FIG. **2** is a diagram illustrating a document **200** that includes links to web documents that may be displayed to a user at a client device **102** in response to a search query. The document may be generated by search program **120** in response to the user search query and displayed by a web browser at one of client devices **102**.

In the exemplary document shown in FIG. **2**, a search query **201** entered by the user was "stanford." Document **200** includes a number of links **210**, **211**, **212**, **213**, and **214** to web documents, such as web pages, that search engine **120** determined to be potentially relevant to search query **201**. In addition to the returned links **210-214**, document **200** may include other information, such as the general category **215** and current events/news links **216** that correspond to search query **201**.

The user may select any of links **210-214** to thereby direct the web browser to return the web document pointed-to by the links. Each of links **210-214** may also include, for example, a snippet of text **220** that describes the linked web document and a description of a category **221** in which the web document is classified.

Consistent with an aspect of the invention, one or more of the links **210-214** may contain a visual cue **230** corresponding to the link. In the example shown in FIG. **2**, visual cue **230** is a miniaturized ("thumbnail") rendering of the web page corresponding to link **210**. In this example, search query **201** was "stanford." Search engine **120** determined that the most highly ranked link for "stanford" is the link to the web site of Stanford University (stanford.edu). Accordingly, search engine **120** included visual cue **230** in document **200**.

In some implementations, search engine **120** may only display visual cues **230** when a link is determined to be "very relevant" to the search query, where "very relevant" is defined by an objective standard for determining relevancy. For example, assume that the large majority of "stanford" search queries eventually result in the user selecting the stanford.edu link. In this situation, search engine **120** may realize that stanford.edu is a very relevant link and therefore include visual cue **230** in document **200**.

By including visual cue **230** with very relevant links, users may learn to associate the visual cue with links that search engine **120** is confident matches the user's intentions. As the users begin to trust visual cue **230**, the visual cue allows the user to home in on the relevant search results faster as they will not necessarily need to read the corresponding snippet **220**. This may thus result in a decreased "time to satisfaction" for the user and a concomitant increase in search engine satisfaction.

FIG. **3** is a flow chart illustrating operation of search engine program **120** consistent with an aspect of the invention. Search engine program **120** may begin by receiving a search query from one of users **105** (act **301**). Based on the search query, document locator **121** may generate a set of links to documents that are relevant to the search query (act **302**). The set of links may be sorted based on a relevance metric returned for each of the documents from ranking component **122** (act **303**).

Search engine program **120** may determine whether any of the links returned by document locator **121** are associated

with “very relevant” documents (act 304). Documents that are determined to be very relevant may be associated with a visual cue, such as visual cue 230 (act 305). Server device 110 may then return the set of links to the user that entered the search query (act 306). The returned set of links may be transmitted as a web document formatted in a manner similar to document 200, and may particularly include visual cues 230 associated with the very relevant documents.

FIG. 4 is a block diagram conceptually illustrating the determination of whether a document is very relevant by search engine program 120.

Whether a particular document, D, is very relevant may depend on a number of parameters. In one implementation, these parameters may be calculated by search engine program 120 and are shown in FIG. 4 as components 401-404. These components include the position of the document D in the ranked list of documents (component 401), the observed historical user click through rate compared to the other documents in the ranked list of documents (component 402), the relevance score for the document relative to the relevance scores for the other documents in the ranked list of documents (component 403), and whether the document is detected as being a pornographic document (component 404).

Component 401 may be determined directly based on the sorted set of links returned from ranking component 122. In general, a document at the top of the sorted list is more likely to be a very relevant document than a document further down on the list.

Component 402 may be based on a historical click through rate of other users in response to the links in the returned set of links. For example, search engine program 120 may calculate a ratio between document D and each other document in the returned set of links. The ratio may be calculated, for each other document E, as:

$$\frac{\hat{D}}{\hat{E}}, \quad (1)$$

where  $\hat{D}$  represents the total number of times users have selected document D and  $\hat{E}$  represents the total number of times users have selected document E. Thus, for each document E, the ratio gives the popularity of document D relative to document E. In an alternate implementation of formula (1) for measuring historical click through rates,  $\hat{D}$  may be defined to represent the total number of times users have selected document D for a particular query Q and  $\hat{E}$  may be defined as the number of times users clicked on any document for query Q. Component 403 may relate the relevance score for document D, as returned from ranking component 122, to the relevance score of each document E. For example, component 403 may store the differences between the relevance scores of document D and the relevance scores of the other documents.

Component 404 may store determinations of whether the document D is a pornographic document. This determination can be made based on, for example, key word comparison, domain name matching, manually entered information, etc.

Based on one or more of the parameters stored by components 401-404, decision component 410 determines whether to classify the document D as very relevant. This classification may be based on a number of functions that use the parameters stored by components 401-404. In one implementation, decision component 410 determines document D is very relevant when: (1) document D’s position is first in the ranked list of results (determined based on component 401),

(2) document D has a high click through rate, as may be determined by a pre-selected click through threshold (determined based on component 402), and (3) the relevance score for document D is significantly greater than the next highest relevance score in the returned set of documents (determined based on component 403). In some implementations, decision component 410 may additionally require that (4) document D is not classified as a pornographic document (determined based on component 404). The specific threshold values for the high click through rate (2) and the differences between relevance scores (3) may be determined by one of ordinary skill in the art via trial and error techniques.

Other functions, based on one or more of components 401-404, may be used by decision component 410 to determine whether a document is very relevant. For example, there may be a tradeoff between how high the click through rate for document D should be and how high the relevance score for document D should be. A high relevance score for document D is generally a good indication that document D is a good result. Accordingly, when document D has a high relevance score and is in the first position in the ranked list, decision component 410 may accept a moderate click through rate for document D and still classify the document as very relevant. On the other hand, if the relevance score for document D is low, decision component 410 may require a much higher click through rate and that the document is in the first position before classifying the document as very relevant. A similar tradeoff can be made with the click through rate and the difference in relevance scores between document D and the second place document in the ranked list. In general, one of ordinary skill in the art will recognize that other functions based on the parameters associated with components 401-404, or based on other parameters, can be used to determine whether a document is highly relevant, or more generally, to generate a value that measures the confidence level that the document is highly relevant. The observed historical click through rate, in particular, may be more generally defined as any parameter relating to logs that record user selections (“clicks”) in response to being presented with search results or other lists of documents.

Further, one of ordinary skill in the art will recognize that a number of modifications are possible to the above-discussed techniques for displaying visual cues for select documents. For example, instead of rendering the thumbnails in real-time, the thumbnails may be pre-rendered for documents that have a high click through rate. Thus, documents that are likely to be displayed with a visual cue can be quickly returned to the user without having to first generate the thumbnail. Further, visual cues other than thumbnails may be presented to the users. For example, other forms of highlighting, such as a logo, contrasting textual fonts (e.g., text contrasted by size, color, or weight) that are designed to stand out, contrasting backgrounds, or textual labels may be used in place of thumbnails.

Additionally, parameters other than the above-described parameters may be used by decision component 410. For example, a parameter related to the click through rate may be defined as the historical ratio of the number of times that users have selected document D after submitting a query to the number of times that the query was submitted. Yet another parameter that could be used by decision component 410 is based on the text of the hyperlinks that connect web documents. In particular, this parameter may be based on the number of links pointing to document D in which the text that describes the link matches the search query. This number may be compared to the number of links pointing to the other documents in the returned set of documents in which the text of the link matches the search query.

An additional embodiment of the techniques described above may be directed to allowing users to “browse by name.” In general, a document that is considered to be very relevant may be considered to be the true target document that the user would like to access. Accordingly, instead of returning a list of search results to the user, the browser may be directed to immediately access the document.

FIG. 5 is an exemplary diagram of a graphical user interface of a web browser 500. Web browser 500 may be any of a number of known web browsers, such as the Internet Explorer browser from Microsoft Corporation. Web browser 500 may include a number of toolbars designed to assist the user in browsing the web. For example, a standard toolbar 510 may include a number of graphical buttons such as forward button 511, back button 512, and refresh button 513. The operation of the buttons on toolbar 510 are generally well known and will not be described in further detail. An address toolbar 520 may include an address field 521 through which a user may enter a location to which they would like to direct the browser. Additional toolbars, such as a third-party toolbar 530 may also be included. Toolbar 530 may be a toolbar designed to assist users in using a search engine.

Conventionally, when a user wishes to view a particular web site, the user will either enter the URL (uniform resource locator) of the site in address field 521 or choose from a list of sites that have been previously saved (“bookmarks”). The URL of a web document references the document using the general format: <protocol>://<server>.<domain name>/<pathname>. For example, the URL “http://www.nps.gov/” specifies that the server (computing device) “www” at the domain “nps.gov” is to be accessed using the HTTP protocol. No pathname is specified, to which the server “www” may respond by returning a default web page, such as the home page for this web site. With some browsers, the user may not be required to enter the protocol field, as the browser may then assume that the user intended to use the HTTP protocol.

Entering complete URLs for a site that the user would like to visit can be inconvenient to the user. For example, the URL “http://www.nps.gov/grca,” which refers to a web page hosted by the National Park Service about the grand canyon is not as easy or memorable for the user to type as the more natural language query “grand canyon.” This inconvenience can be even more pronounced for speakers of languages that are not written using the English alphabet. The domain name system (DNS), which resolves the URLs, was only designed to operate with the English alphabet. Accordingly, if a user would like to access, for example, a Chinese site for content presented using Chinese characters, the user would still need to enter the URL using English characters.

FIG. 6A is a flowchart illustrating operations of search engine 120 and client devices 102 consistent with an aspect of the invention. A user of browser 500 may enter terms in address field 521 of browser 500 (act 601). The terms may be natural language terms that the user believes describe a particular web site the user would like to access. The terms do not need to be in the format of a URL and can be entered in non-English characters (e.g., a Chinese or Japanese character set or other double byte characters). For example, if the user would like to access the National Park Service’s web page about the grand canyon, the user can simply enter the terms “grand canyon.” As additional examples, to visit the home pages of the companies IBM or Lands End, the user may simply enter “ibm” or “lands end,” respectively, instead of “www.ibm.com” or “www.landsend.com,” respectively.

The terms entered by the user may be examined to determine whether they constitute a valid URL or other locator (such as a reference to a local file) recognized by the browser (act 602). This examination may be performed by the browser, by a browser extension (e.g., toolbar 530), or by other processes executing at client device 102. A valid URL may be determined based on whether the terms are structured in the format of a URL, such as “www.ibm.com.” Additionally, in some implementations, the terms entered by the user may be given a chance to resolve using the normal DNS lookup system. If the terms are not resolved into an Internet address within a set time limit, or it is clear the browser 500 is not able to resolve the terms, the terms are determined to not constitute a valid URL.

Terms that define a valid URL are processed as normal to obtain the indicated web page (act 603). Terms that do not define a valid URL, however, may be treated as a search query and sent to search engine 120 (act 604). The search query may be processed by search engine 120 in a manner similar to the processing discussed with reference to FIG. 3. More specifically, the search engine may generate relevant links and determine whether any of the linked documents are “very relevant” (acts 605 and 606). In the context of this embodiment, “very relevant” can be defined as a document that the search engine determines, with reasonable certainty, is the document that the user is attempting to access. This determination can be made based on some or all of the factors previously discussed with respect to FIG. 4. Thus, for example, a ranking score of the document, click logs related to the document (e.g., historical click through rates), and the relevance score of the document may be examined. From one or more of these factors, whether one of the documents is very relevant can be determined.

If one of the documents in the generated list of relevant links is determined to be very relevant, the URL of this document may be passed back to client device 102 (act 607). Browser 500 may then immediately display the document (act 608). FIG. 7 is an exemplary diagram of a graphical user interface of web browser 500 after the terms “grand canyon” were entered into address bar 521. As shown, server device 110 may have determined that the web page “http://www.nps.gov/grca” was a very relevant document. The URL of this document may accordingly be placed into address bar 521 and the contents of the corresponding document accessed and displayed.

If no document is determined to be very relevant, server 110 may return the list of relevant documents to client device 102 (act 609). Client device 102 may then display the list to the user as a list of search results (act 610). FIG. 8 is an exemplary diagram of a graphical user interface of web browser 500 after the terms “grand canyon snowshoeing mice” were entered into address bar 521. For these terms, it may be determined that no web page is relevant enough to be determined to be the web page that the user is attempting to access. Instead, a standard search result page, including links and snippets describing the links, may be displayed to the user. If desired, the user may select one of the result links to access that particular web page.

FIG. 6B is a flowchart illustrating exemplary operations for determining whether terms entered by the user are a valid URL (act 602). Whether the terms are a “valid URL” can be more generally thought of as whether the terms are a valid browser address bar entry. If so, the browser is allowed to proceed as normal. If not, acts 604-610 may be performed. The operations of FIG. 6B are based on an exemplary implementation using the Microsoft Internet Explorer web browser. Implementations in other browsers may differ.

The terms may first be examined to determine whether they define a valid operating system file that the browser would display (act 650). In some versions of Internet Explorer, users may type file names (e.g., local file names such as "C:\My Documents\myfile.txt") into the browser address bar. In response, the browser may display the file. If the terms define a valid file, the document may be accessed as normal by the browser (act 603). Otherwise, it may next be determined whether the terms are a "search shortcut" defined for the browser. Some browsers, such as Internet Explorer, allow the user to define "search shortcut" terms that the browser should interpret as a command to execute a search at a particular search engine. The user may, for instance, define the letter "g" to mean perform a search at the Google search engine. By typing "g Labrador Retriever dog" into the address bar, the user is instructing the browser to return results from the Google search engine for the search query "Labrador Retriever dog." It may next be determined if the terms entered by the user are a search shortcut (act 655). If so, the document may be accessed as normal by the browser (act 603).

It may next be determined whether the terms entered by the user define a universal naming convention (UNC) path (act 660). UNC paths are a standard way to access network shares in some Microsoft operating systems. Users sometimes enter such paths in the Internet Explorer address bar. If the terms are a valid UNC path, the terms may be processed as normal by the browser (act 603). It may next be determined whether the terms are formatted as a URL (act 665). If so, the document may be accessed as normal by the browser (act 603).

Next, it may be determined whether the terms are double-byte characters (act 670). If so, the terms are considered to not be a valid URL and processing proceeds to act 604. Next, it may be determined whether the terms include a space character (act 675). If so, the terms are considered to not be a valid URL and processing proceeds to act 604. Next, the local DNS system may be consulted to determine whether the terms define a valid DNS entry (act 680). Determining whether the terms are a valid DNS entry may be based on timeout period in which the DNS system responds. If a valid response is received from the DNS system within the timeout period, the user is routed to the DNS entry (act 685). Otherwise, processing proceeds to act 604.

The concepts described above allow users to enter natural language terms that describe a particular web site into a browser address field instead of a formal URL. The terms are evaluated to determine whether they correspond, with a high likelihood, to a particular web site. If so, this web site may be immediately accessed. If not, a list of search results based on the terms may be displayed by the browser. These concepts are particularly useful for non-English language users. These users can enter terms using their native written character set. The terms may be evaluated by a search engine as written and, if appropriate, the English character version of the URL corresponding to the non-English character terms may be returned and automatically accessed.

#### CONCLUSION

It will be apparent to one of ordinary skill in the art that aspects of the invention, as described above, may be implemented in many different forms of software, firmware, and hardware in the implementations illustrated in the figures. The actual software code or specialized control hardware used to implement aspects consistent with the present invention is not limiting of the present invention. Thus, the operation and behavior of the aspects were described without reference to the specific software code—it being understood that a person of ordinary skill in the art would be able to design software and control hardware to implement the aspects based on the description herein.

The foregoing description of preferred embodiments of the invention provides illustration and description, but is not intended to be exhaustive or to limit the invention to the precise form disclosed. Modifications and variations are possible in light of the above teachings or may be acquired from practice of the invention.

No element, act, or instruction used in the description of the application should be construed as critical or essential to the invention unless explicitly described as such. Also, as used herein, the article "a" is intended to include one or more items. Where only one item is intended, the term "one" or similar language is used. Further, the phrase "based on" is intended to mean "based, at least in part, on" unless explicitly stated otherwise.

What is claimed:

1. A computer-implemented method comprising:
  - receiving one or more terms;
  - transmitting a search query defined based on the terms to a search engine that obtains a plurality of search results and corresponding relevance scores;
  - determining whether the search results include a first document that is associated with a relevance score that is greater, by a threshold amount, than relevance scores of all other documents in the search results;
  - displaying, when the search results are determined to include the first document, the first document; and
  - displaying, when the search results are determined to not include the first document, links to a plurality of documents corresponding to the search results.
2. The computer-implemented method of claim 1, further comprising:
  - determining whether the received terms represent a valid locator; and
  - retrieving a document corresponding to the locator when the terms represent a valid locator.
3. The computer-implemented method of claim 2, wherein determining whether the terms represent a valid locator is based on a determination of whether the terms include a Uniform Resource Locator (URL).
4. The computer-implemented method of claim 1, wherein determining whether the terms represent a valid locator is based on an analysis of a browser in attempting to resolve the terms using a domain name system (DNS) lookup.
5. The computer-implemented method of claim 1, wherein the terms are received via an address bar of a browser.
6. The computer-implemented method of claim 1, wherein each of the links to the plurality of documents are visually associated with descriptive text snippets derived from a content of the plurality of documents.
7. The computer-implemented method of claim 1, wherein the determining further comprises determining whether the search results include the first document based additionally on a parameter relating to information contained in click logs of documents corresponding to the search results.
8. The computer-implemented method of claim 7, wherein the click logs include an observed historical click through rate of the documents corresponding to the search results.
9. The computer-implemented method of claim 8, wherein the observed historical click through rate is calculated as a ratio representing a total number of times users have selected a first document to a total number of times users have selected a second document.
10. The computer-implemented method of claim 1, wherein the terms are natural language queries entered by a user to access a web site.

11

11. The computer-implemented method of claim 1, wherein the terms are entered in a non-English language character set.

12. A computer-readable memory device containing programming instructions to be executed by one or more processors, the computer-readable medium comprising:

instructions for implementing a search toolbar in a browser that includes an address toolbar, the search toolbar modifying functionality of the address toolbar by enabling the address toolbar to accept double byte characters;

instructions for transmitting terms entered into the address toolbar to a search engine;

instructions for receiving search results from the search engine that include links to a plurality of documents;

instructions for displaying in the browser, when the search results include a very relevant result, a document corresponding to the very relevant result, the determination of whether the search results include the very relevant result being based on a historical click through rate associated with the document relative to a historical click through rate of other documents in the search results; and

instructions for displaying in the browser, when the search result does not include a very relevant result, the links to the plurality of documents corresponding to the search results.

13. The computer-readable memory device of claim 12, further comprising:

instructions for determining whether the terms entered into the address toolbar represent a valid locator; and

instructions for retrieving a document corresponding to the valid locator when the terms represent a valid locator.

14. The computer-readable memory device of claim 13, wherein the instructions for transmitting, instructions for receiving, instructions for displaying a document, and instructions for displaying links are not executed when the terms entered into the address toolbar are determined to represent a valid link.

15. The computer-readable memory device of claim 13, wherein the terms are determined to be a valid locator when the terms include a Uniform Resource Locator (URL).

16. The computer-readable memory device of claim 13, wherein the terms are determined to represent a valid locator based on an analysis of the browser in attempting to resolve the terms using a domain name system (DNS) lookup.

17. The computer-readable memory device of claim 12, wherein the terms are natural language queries entered by a user.

18. The computer-readable memory device of claim 12, wherein the terms are entered in a non-English language character set.

19. A computer-implemented method comprising:

receiving a search query from a user;

performing a search of a database of web documents based on the search query to obtain search results;

determining whether the search results include a particular document that the user is attempting to access;

returning a link to the particular document to the user for immediate display of the particular document to the user when it is determined that the search results include the particular document that the user is attempting to access; and

returning a plurality of relevant document links for display to the user when it is determined that the search results do not include the particular document that the user is attempting to access.

12

20. The computer-implemented method of claim 19, wherein performing the search of the database includes obtaining a plurality of relevant document links.

21. The computer-implemented method of claim 19, wherein the search query is in a non-English language character set.

22. The computer-implemented method of claim 19, wherein determining whether the search results include the particular document that the user is attempting to access further comprises:

determining whether the search results include the particular document that the user is attempting to access based on a parameter relating to information contained in click logs of documents relevant to the search query.

23. The computer-implemented method of claim 22, wherein the click logs include an observed historical click through rate of the documents relevant to the search query.

24. The computer-implemented method of claim 23, wherein the observed historical click through rate is calculated as a ratio representing a total number of times users have selected a first document to a total number of times users have selected a second document.

25. The computer-implemented method of claim 19, wherein determining whether the search results include the particular document that the user is attempting to access further comprises:

determining whether the search results include the particular document based on relative values of relevance scores associated with the search results.

26. A system, comprising:

a memory to store a document index; and  
a processor to:

perform a search of the document index based on a search query received from a user to obtain a relevant result;

determine whether the relevant result is likely to correspond to a particular document that the user would like to access based on relative values of relevance scores associated with other results of the search;

transmitting a link to the particular document to the user for immediate display of the particular document to the user when it is determined that the relevant result corresponds to the particular document that the user would like to access; and

transmitting a plurality of links relevant to the search query for display to the user when it is determined that the relevant result does not correspond to the particular document that the user would like to access.

27. A computer-implemented method comprising:

receiving one or more terms via an address bar of a browser;

determining whether the received terms represent a valid Uniform Resource Locator (URL);

retrieving a document corresponding to the terms when the terms represent a valid URL;

initiating a search based on the terms to obtain search results when the terms do not represent a valid URL;

displaying, when the search results include a first document that is more relevant, by at least a threshold amount, to the one or more terms than other documents of the search results, the first document; and

displaying, when the search results do not include the first document, links to a plurality of documents corresponding to the search results.