



(19) **United States**

(12) **Patent Application Publication**

Tsun et al.

(10) **Pub. No.: US 2008/0104194 A1**

(43) **Pub. Date: May 1, 2008**

(54) **CONTENT REQUEST OPTIMIZATION**

(22) Filed: **Oct. 30, 2006**

(75) Inventors: **Stephen Tsun**, Cupertino, CA (US); **Deepak Jindal**, Cupertino, CA (US)

Publication Classification

(51) **Int. Cl. G06F 15/16** (2006.01)

(52) **U.S. Cl. 709/217; 709/219**

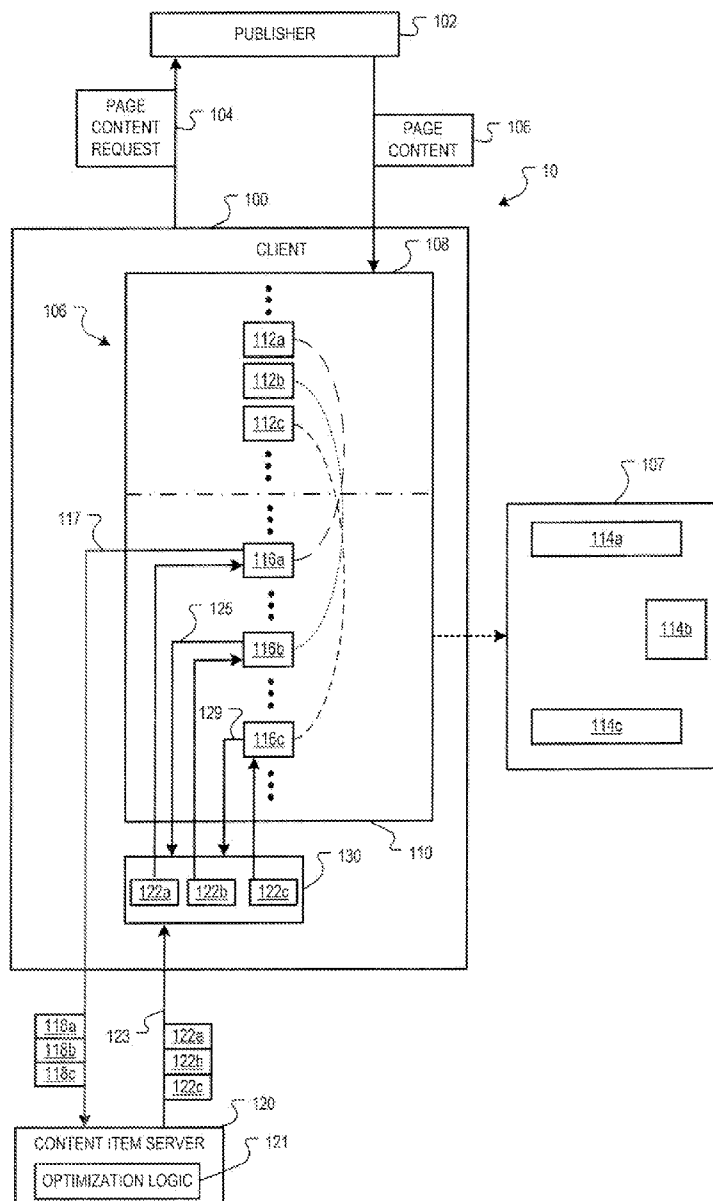
Correspondence Address:
FISH & RICHARDSON P.C.
PO BOX 1022
MINNEAPOLIS, MN 55440-1022

(57) **ABSTRACT**

Content item requests are identified in a web page source document. For each request, it is determined if a content item request has been generated, and if a content item request has not been generated, a content item request for all requests in the web page source document is generated.

(73) Assignee: **GOOGLE INC.**, Mountain View, CA (US)

(21) Appl. No.: **11/554,348**



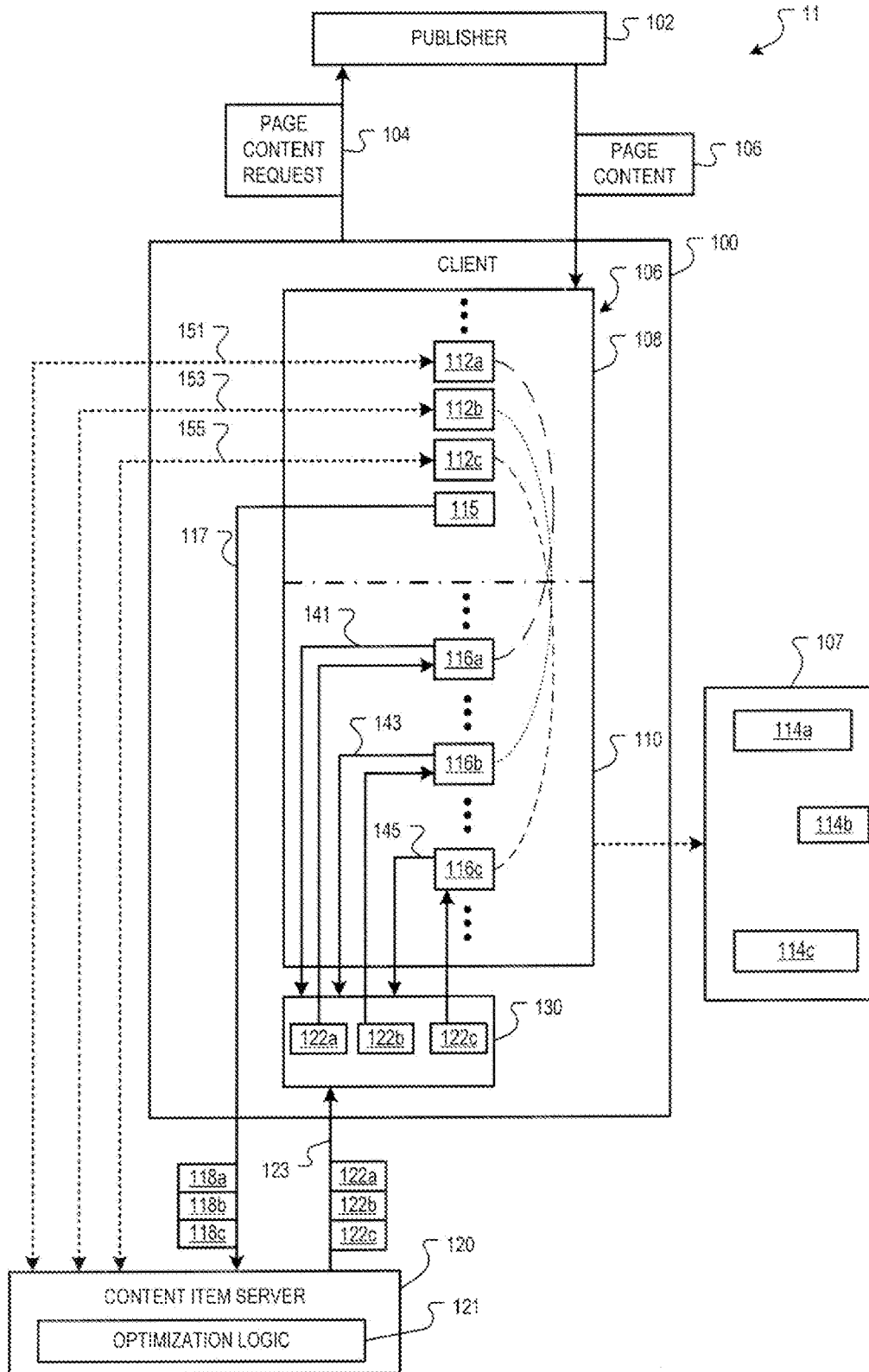


FIG. 2

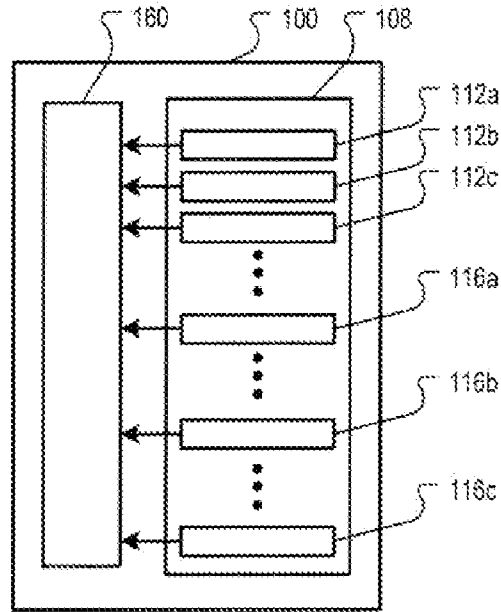


FIG. 3

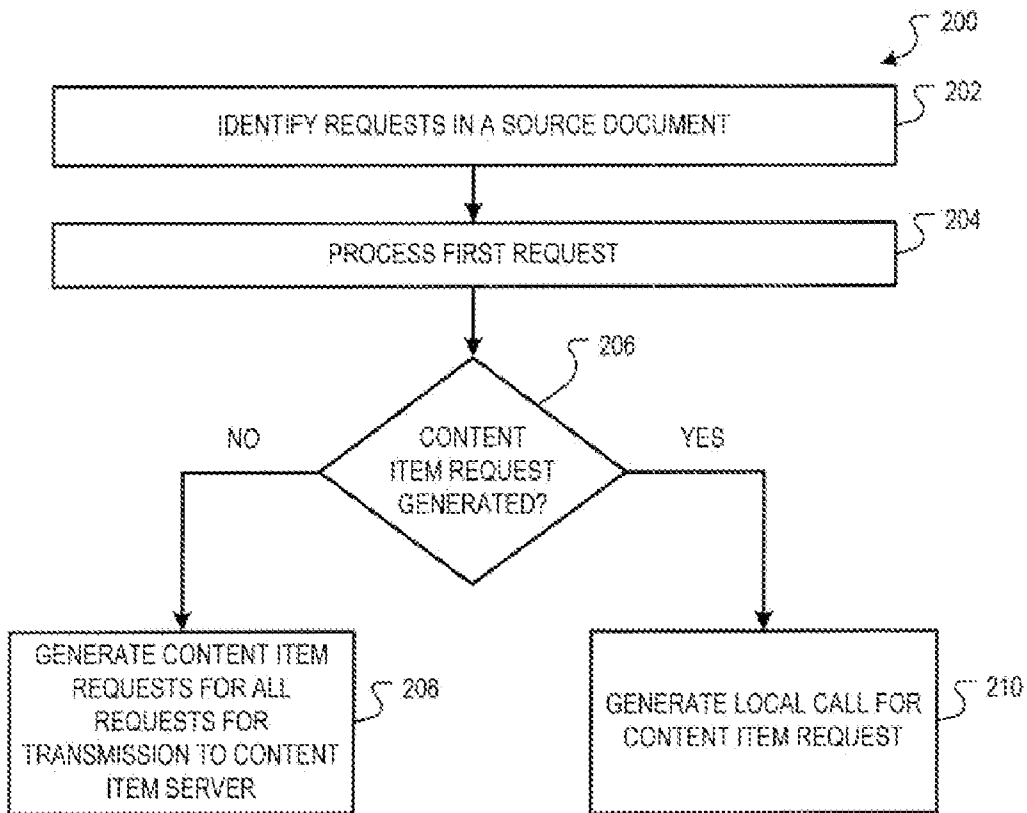


FIG. 4

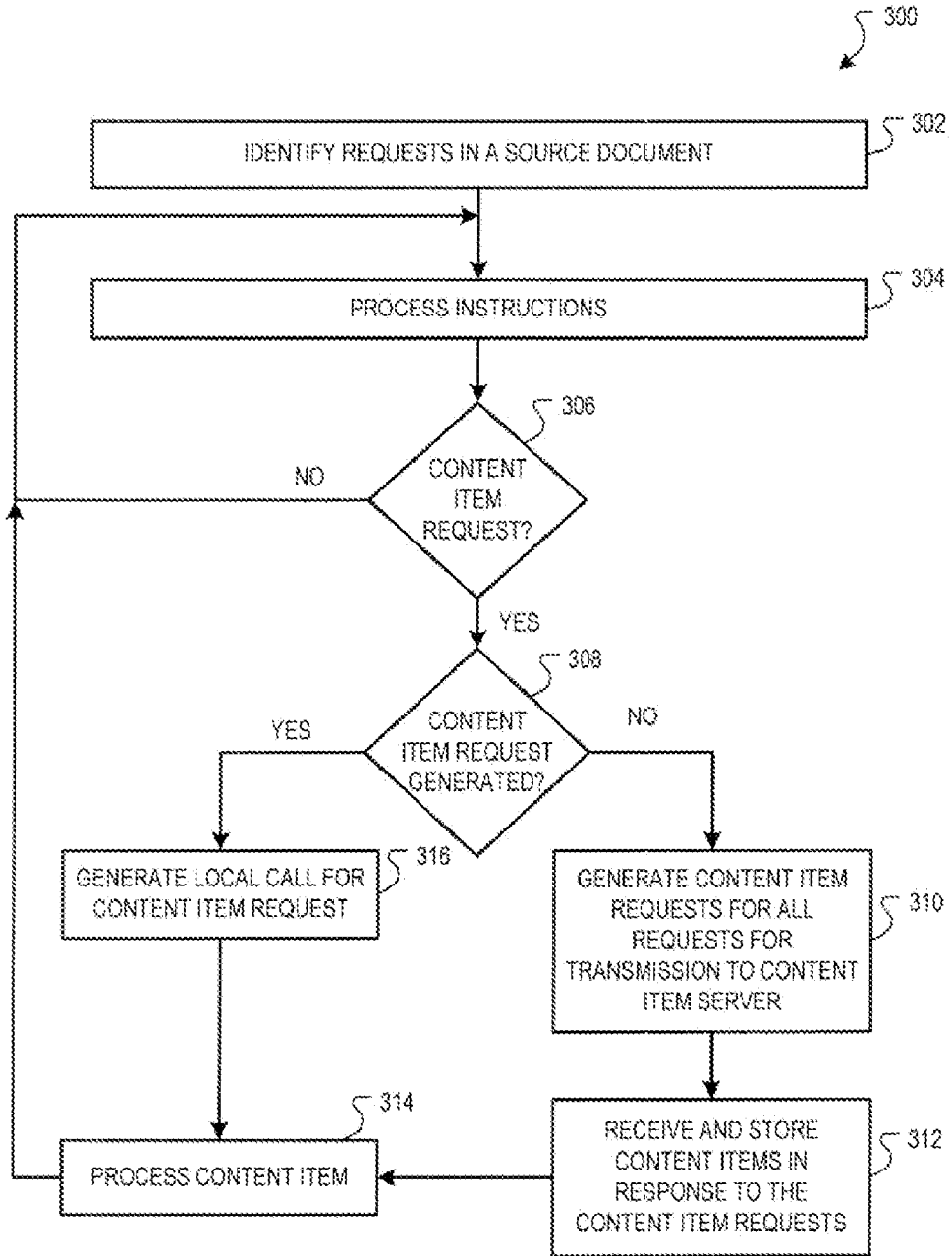


FIG. 5

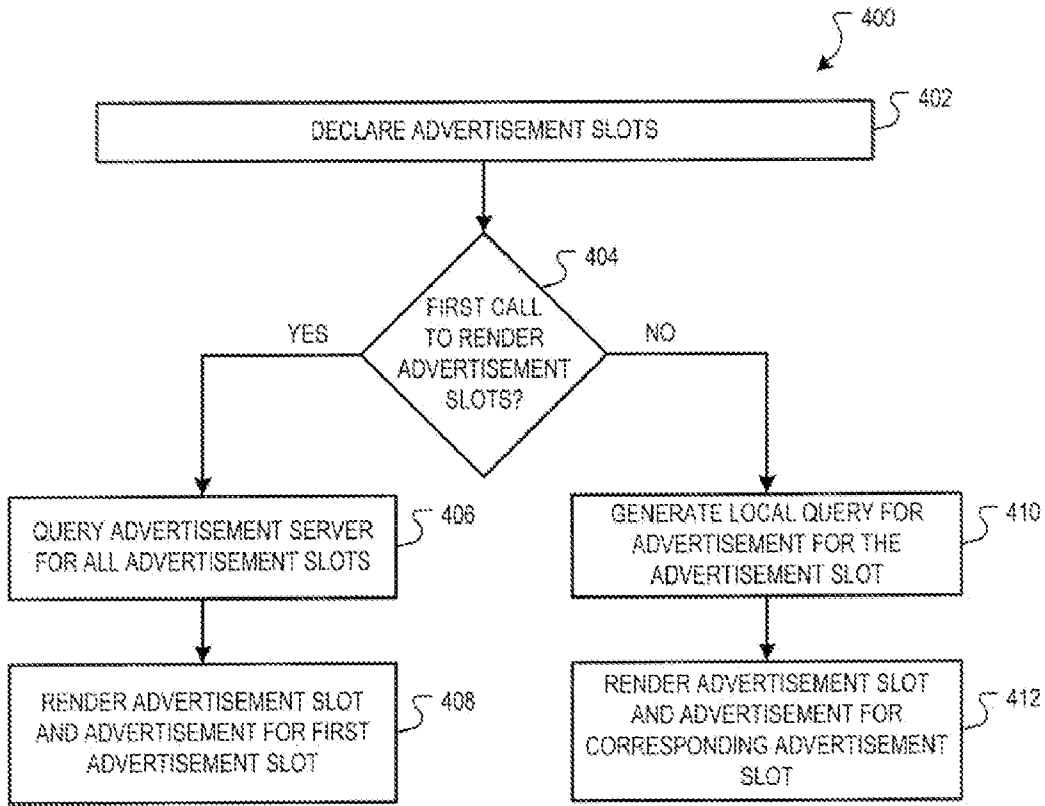


FIG. 6

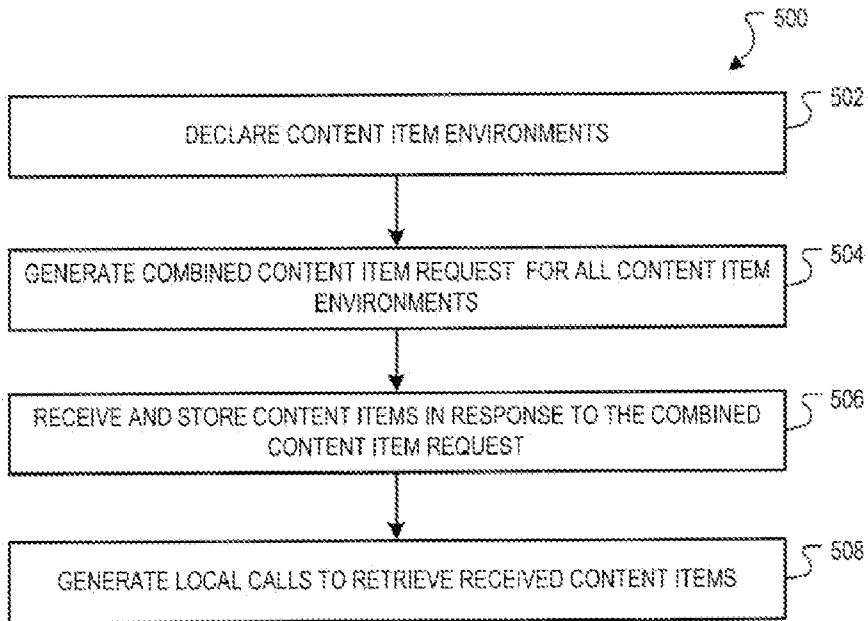


FIG. 7

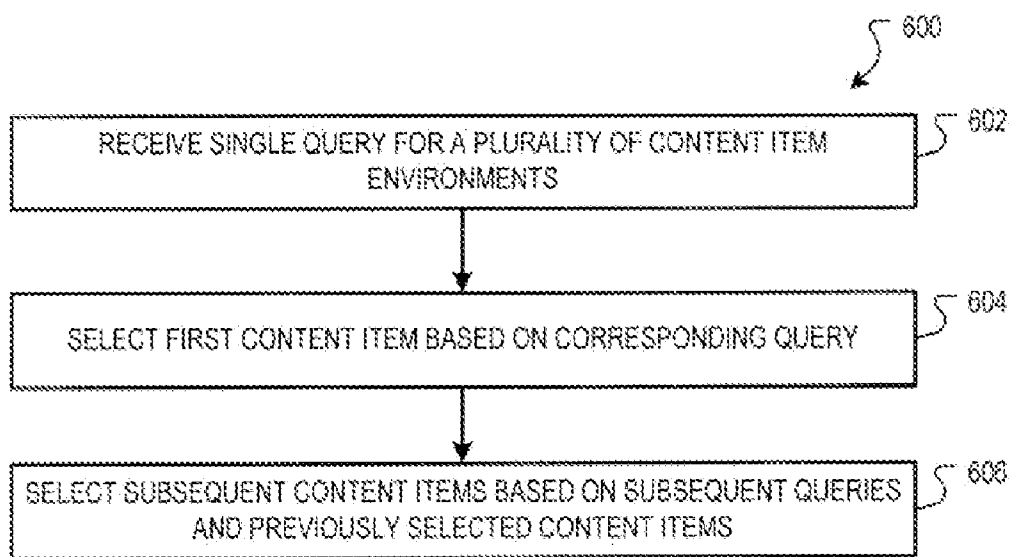


FIG. 8

CONTENT REQUEST OPTIMIZATION

FIELD

[0001] This disclosure relates to information retrieval.

BACKGROUND

[0002] Content displayed on a web page can be generated by one or more content item servers in response to content item requests that are generated during the rendering of the web page by a client device. Often a publisher of a web page may define multiple content item environments, e.g., advertisement slots, for content items, e.g., advertisements, to be displayed within a web page. Typically, each content item environment has an associated content item request e.g. an advertisement request, that is transmitted to a content item server, e.g., an advertisement server. When the web page is rendered by a client device that has requested the publisher's web page, a content item will be displayed in each content item environment.

[0003] A web page having multiple content item environments can, however, generate excessive traffic to the content item server. Additionally, because web page instructions are often interpreted, the content item requests are generated as each content item request instruction is processed. Accordingly, a first content item request for a web page is transmitted and served without knowledge of any subsequent content item requests that may be encountered for that page. Thus, each content item served by the content item server for a web page if the rendering of the web page generates multiple content item requests.

SUMMARY

[0004] Disclosed herein is a content request optimization system that includes first and second instructions stored in a data store. The first instructions are configured to define content item environments in a page environment. The second instructions are associated with each content item environment, and configured to determine whether a content item request has been generated by any of the second instructions, and in response to determining that a content item request has not been generated by any of the second instructions, generate a content item request for content items for each of the content item environments.

[0005] A method for content request optimization identifies requests in a web page source document. For each identified requests, a determination is made if a content item request has been generated. If a content item request has not been generated, then a content item request for all requests in the web page source document is generated.

[0006] Another example content request optimization system includes a data store storing a web page source files. The web page source files include declaration instructions configured to define advertisement slots and rendering instructions associated with the advertisement slots. The rendering instructions are configured to determine whether an advertisement request has been generated, and in response to determining that an advertisement request has not been generated, transmit an advertisement request for each of the advertisement slots.

[0007] Another example content request optimization system includes a data store storing a web page source files. The web page source files include declarations instructions, fetching instructions, and rendering instructions. The declaration instructions are configured to define content item environments, and the fetching instructions are configured to generate content item requests for each of the content item envi-

ronments. The rendering instructions are associated with the advertisement slots and configured to generate local content item calls to retrieve content item received in response to the content item requests and render the retrieved content items in corresponding content item environments.

[0008] The systems and methods described herein may realize one or more of the following features and advantages. A single content item request for a plurality of content item environments can be generated, reducing content item server traffic. A content item server may optimize the selection of content items for a requesting web page, as the content items may be selected based on the content item request and other selected content items for the requesting web page. These and other advantages and features may be realized by the systems and methods described below.

BRIEF DESCRIPTION OF THE DRAWINGS

[0009] FIG. 1 is a block diagram of an example system for requesting content from a source.

[0010] FIG. 2 is a block diagram of another example system for requesting content from a source.

[0011] FIG. 3 is a block diagram of a source document and a corresponding cached instruction library.

[0012] FIG. 4 is a flow diagram of an example process for handling content item requests.

[0013] FIG. 5 is a flow diagram of another example process for handling content item requests.

[0014] FIG. 6 is a flow diagram of another example process for handling content item requests.

[0015] FIG. 7 is a flow diagram of another example process for handling content item requests.

[0016] FIG. 8 is a flow diagram of an example process for responding to an consolidated content item request.

DETAILED DESCRIPTION

[0017] FIG. 1 is a block diagram of an example system 10 for requesting content items from a source, e.g., a content item server. In on implementations, the content items can be advertisements, and the content item server can be an advertisement server. Different types of content can also be requested, e.g., weather, driving directions, trivia, etc.

[0018] The requesting device, in the implementations shown, is a client system 100 that is configured to visit web pages over a network, e.g., the Internet. The client system 100 can, for example, be a web browser, a computing device, a mobile communication device, or some other device executing network navigation software and the like. The web address visited by the client system 100 can be resolved to identify a publisher 102, e.g., a server, hosting a corresponding web page. The client system 100 thus sends a web page content request 104 to the publisher 102 for the web page content 106, e.g., a hypertext markup language (HTML) source document, and the publisher 102, in response to the request, provides the web page content 106 to the client system 100.

[0019] In an implementation, the web page content 106 can, for example, include a head section 108 and body section 110, each section having interpreted instructions. The head section 108 can, for example, be interpreted before the body section 110. In an implementation, first instructions 112a, 112b and 112c, e.g., declarations instructions, are executed in the head section 108 to define one or more content item environments 114a, 114b, and 114c to be rendered in a corresponding web page 107 to be displayed on a display device.

For example, the content item environments **114a**, **114b**, and **114c** can comprise advertisement slots that are rendered and displayed in the approximate positions as depicted in the rendered web page **107**, e.g., in top slot, a middle slot, and bottom slot. In one implementation, the content item environments **114a**, **114b**, and **114c** can be synchronous environments, e.g., divs within the same frame of the rendered web page **107**. In another implementation, the content item environments **114a**, **114b**, and **114c** can be asynchronous environments, e.g., iFrames within the rendered web page **107**.

[0020] Included in the body selection **110** are second instructions **116a**, **116b** and **116c**, e.g., rendering instructions, that are associated with the content item environments **114a**, **114b** and **114c**. The second instructions **116** are configured to invoke a request process that determines whether a content item request has been generated by any of the second instructions **116**. In one implementation, in response to determining that a content item request has not been generated by any of the second instructions **116**, the particular set of second instructions **116** being executed, e.g., second instructions **116a**, generate a combined content item request **117** for content items for each of the content item environments **114a**, **114b** and **114c**.

[0021] In one implementation, the first instructions **112a**, **112b** and **112c** are interpreted before the second instructions **116a**, **116b** and **116c** are processed by the client device **100**. Accordingly, the content environments **114a**, **114b** and **114c** are already defined when any of the second instructions **116a**, **116b** and **116c** are executed. Thus, when the first set of second instructions **116** are executed, e.g., execution of the second instructions **116a**, the process invoked by the second instructions **116a** can determine that the content environments **114b** and **114c** are also defined, and thus generate the combined content item request **117**.

[0022] In one implementation, the combined content item request **117** can include a concatenation of content item requests **118a**, **118b** and **118c** that corresponds to requests for the content item environments **114a**, **114b** and **114c**. In response, the content item server **120** can, for example, optimize the selection of corresponding content items **122a**, **122b** and **122c** served. In one implementation, the content item server **120** includes optimization logic **121** to optimize the selection of the content items **122a**, **122b** and **122c**. For example, the content items **122a**, **122b** and **122c** can be selected according to the optimization logic **121** to ensure that disparate content items are selected, e.g., to ensure that none of the selected content items are duplicate content items.

[0023] In one implementation, the content item requests **118a**, **118b** and **118c** can, for example, include an identical pageview identifier, and the optimization logic **121** can select content items **122a**, **122b** and **122c** based on the pageview identifier and the address of the content item requests **118a**, **118b** and **118c**. Other content item optimization selection processes can also be used.

[0024] The content items **122a**, **122b** and **122c** can, for example, be transmitted to the client system **100** in a combined reply **123** and stored in a data store **130**, e.g., a cache associated with a browser running on the client **100**. In response to the combined request **117** issued by the second instructions **116a**, the content item **122a** is rendered in the content menu item environment **114a**. Thereafter, upon execution of the second instructions **116b**, the request process determines that a content item request has previously been generated, e.g., the combined content item request **117** and/or

the content item requests **118a**, **118b** and **118c**. In response to this determination, the second instructions **116b** generate a local content item request **125** to the data store **130**, which, in turn, provides the content item **122b** to be rendered in the corresponding content item slot **114b**. The second instructions **116c** also generate a local content item request **129** to retrieve the content item **122c** stored in the data store for rendering in the content item environment **114c**.

[0025] FIG. 2 is a block diagram of another example system **11** for requesting content from a source. The system **11** of FIG. 2 operates in a similar manner to the system **10** of FIG. 1, except that separate content item request instruction **115** are executed to generate the combined content item request **117** that includes content request **118a**, **118b** and **118c** for the content item environments **114a**, **114b** and **114c**. The second instructions **116a**, **116b** and **116c** are configured to generate local content item requests **141**, **143** and **145**, respectively, to retrieve and render the stored content items **122a**, **122b** and **122c** in the content item environments **114a**, **114b** and **114c**.

[0026] In another implementation, each of the first instructions **112a**, **112b** and **112c** can retrieve content item environment characteristics, e.g., height and width dimensions. For example, the first instructions **112a**, **112b** and **112c** can transmit content item environment requests **151**, **153** and **155**, respectively to the content item environments **114a**, **114b** and **114c**. Often a publisher or a content item provider may modify a content item environment **114**; accordingly, by storing the modify the web page content **106**.

[0027] FIG. 3 is a block diagram of an example source document **106** and a corresponding cached instruction library **160**. The cached instruction library **160** can, for example, include one or more function, such as javascript functions, that are invoked by the first instructions **112** and the second instructions **116**. In one implementation, the instructions library **160** can be provided by the content item server **120** and stored in a local data store on the client system **100**. For example, upon rendering the web page content **106** and encountering first instruction **112**, the client system **100** can determine if the instruction library **160** is stored in a local data store, e.g., a cache associated with a browser application, If the instruction library **160** is not stored in the local data store, the client system **100** can request the instruction library **160** from the content item server **120**.

[0028] By implementing function calls in the first instruction **112** and the second instructions **116** to the instruction library **160**, the provider of the content server **120** may implement query changes and other content request changes that are essentially transparent to providers of the publisher systems **102**.

[0029] FIG. 4 is a flow diagram of an example process **200** for handling content item requests. The example process **200** can, for example, be implemented in the client system **100** by rendering the web page content **106** and executing the instructions **112** and **116**.

[0030] Stage **202** identifies requests in a source document. For example, a client system **100**, such as a web browser, can execute the instructions **112** to identify requests in a source document, such as web page content **106**.

[0031] Stage **204** processes the first request. For example, a client system **100**, such as a web browser, can execute the instructions **116a** related to a content item request for the content item environment **114a**.

[0032] Stage **206** determines if a content item request to a content item server has been generated. For example, a client system **100**, such as a web browser, can execute the instruc-

tions 116a to determine if a combined content item request 117 or content item requests 118a, 118b and/or 118c have been generated and/or transmitted to the content item server.

[0033] If stage 206 determines that a content item request to a content item server has not been generated, then stage 208 generates content item request for all requests in the web page for transmission to the content item server. For example, a client system 100, such as a web browser, can execute the instructions 116a to generate the combined request 117.

[0034] If, however, stage 206 determines that content item request to a content item server has been generated, then stage 210 generates local content item request. For example, a client system 100, such as a web browser, can execute the instructions 116b and 116c to generate the local content item requests 125 and 129, respectively.

[0035] FIG. 5 is a flow diagram of another example process 300 for handling content item requests. The example process 300 can, for example, be implemented in the client system 100 by rendering the web page content 106 and executing the instructions 112 and 116.

[0036] Stage 302 identifies requests in a source document. For example, a client system 100, such as a web browser, can execute the instructions 112 to identify requests in a source document, such as web page content 106.

[0037] Stage 304 processes instructions in the source document. For example, a client system 100, such as a web browser, can execute other instruction in the web page source document 106, such as formatting instructions, imaging instructions, javascripts, etc.

[0038] Stage 306 determines if the instructions are a content item request. For example, a client system 100, such as a web browser, upon executing the instructions 116a can determine that the instructions are content item request processing instructions.

[0039] If stage 306 determines that the instructions are not a content item request, then the process returns to stage 304. If, however, stage 306 determines that the instructions are a request instruction, then stage 308 determines if a content item request to a content item server has been generated. For example, a client system 100, such as a web browser, can execute the instructions 116a to determine if a combined content item request 117 or content item requests 118a, 118b and/or 118c have been generated and/or transmitted to the content item server.

[0040] If stage 308 determines that a content item request to a content item server has not been generated, e.g., the content item request is the first content item request to be processed, then stage 310 generates content item requests for all requests in the web page for transmission to the content item server. For example, a client system 100, such as a web browser, can execute the instructions 116a to generate a combined content item request 117.

[0041] After stage 310 processes, stage 312 receives and stores the content items that are provided in response to the content item requests, and stage 314 processes the content item for the first content item request. For example, a client system 100, such as a web browser, can receive and store in a data store, such as the data store 130, the content items 122a, 122b and 122c provided by the content item server 120. Thereafter, the content item 122a can be rendered in the content item environment 114a.

[0042] If however stage 308 determines that a content item request to a content item server has been generated e.g., the content item request is a second or subsequent content item request to be processed, then stage 316 generates a local content item request, and stage 314 processes the content item for the subsequent content item request.

[0043] FIG. 6 is a flow diagram of another example process 400 for handling content item requests. The example process 400 can, for example, be implemented in the client system 100 by rendering the web page content 106 and executing the instructions 112 and 116.

[0044] Stage 402 declares advertisement slots. For example, a client system 100, such as a web browser, can execute the instructions 112 to declare advertisement slots in a web page.

[0045] If Stage 404 determines if a call to render an advertisement slot is a first call. For example, a client system 100, such as a web browser, can execute the instructions 116a to determine if a advertisement requests have been generated and/or transmitted to the an advertisement server.

[0046] If stage 404 determines that the call to render the advertisement slot is a first call, then stage 406 queries an advertisement server for all advertisement slots. For example, a client system 100, such as a web browser can execute the instructions 116a to generate a combined advertisement request that includes advertisement requests for all advertisement slots in the web page. In one implementation the combined request can include queries to fetch advertisements for all of the advertisement slots declared in stage 402. After stage 406 process, stage 408 renders an advertisement slot and an advertisement for the first advertisement slot. For example, a client system 100, such as a web browser, can execute the instructions 116a to render an advertisement slot and an advertisement received from an advertisement server.

[0047] If, however, stage 404 determines that the call to render the advertisement slot is not a first call, then stage 410 generates a local query for the advertisement for the advertisement slot. For example, a client system 100, such as a web browser, can execute the instructions 116b and 116c to generate local queries to a local data store, such as a cache associated with the web browser.

[0048] Stage 412 renders the advertisement slot and the advertisement for the corresponding advertisement slot. For example, a client system 100, such as a web browser, can execute the instructions 116b and 116c to render corresponding advertisement slots and advertisement received from an advertisement server and stored in the local data store.

[0049] FIG. 7 is a flow diagram of another example process 500 for handling content item requests. The example process 500 can, for example, be implemented in a client system 100 by rendering the web page content 106 and executing the instructions 112, 115 and 116.

[0050] Stage 502 declares content item environments. For example, a client system 100, such as a web browser, can execute the instructions 112a, 112b and 112c to declare the content item environments 114a, 114b and 114c.

[0051] Stage 504 generates a combined content item request for all content item environments. For example, a client system 100, such as a web browser, can execute the instructions 115 to generate a combined content item request 117.

[0052] Stage 506 receives and stores content items in response to the combined content item request. For example, a client system 100, such as a web browser, can receive and store the content items 112a, 112b and 112c in the data store 130, e.g., a cache associated with the web browser.

[0053] Stage 508 generates local calls to retrieve content items. For example, a client system 100, such as a web browser, can execute the instructions 116a, 116b, and 116c to generate local calls 141, 143 and 145 to the data store 130 to retrieve the content items 122a, 122b and 122c, respectively.

[0054] FIG. 8 is a flow diagram of an example process 600 for responding to a consolidated content item request. The example process 600 can, for example, be implemented in a content item server, such as the content item server 120, that include optimization logic, such as optimization logic 121.

[0055] Stage 602 receives a single query for a plurality of content item environments. For example, a combined content item request 117 can be received by the content item server 120. The combined content item request 117 can include multiple content item requests, e.g., 118a, 118b, and 118c. In one implementation, each content item request 118 includes a common identifier, e.g., the same pageview identifier.

[0056] Stage 604 selects a first content item based on a corresponding content item query. For example, the content item server 120 can select the content item 122a based on the content item request 118a.

[0057] Stage 606 selects subsequent content items based on subsequent queries and previously selected content items. For example, the content item server 120 can select the content items 122b and 122c based on the content item request 118b and 118c, and also based on the previously selected content item 122a. The selection process may be implemented in computer processing systems including program code comprising program instructions that are executable by the computer processing system. Other implementations may also be used. Additionally, the flow diagrams and structure block diagrams described in this patent document, which describe particular methods and/or corresponding acts in support of steps and corresponding functions in support of disclosed algorithms, and equivalents thereof.

[0058] This written description sets forth the best mode of the invention and provides examples to describe the invention and to enable a person of ordinary skill in the art to make and use the invention. This written description does not limit the invention to the precise terms set forth. Thus, while the invention has been described in detail with reference to the examples set forth above, those of ordinary skill in the art may effect alterations, modifications and variations to the examples without departing from the scope of the invention.

What is claimed is:

1. A method, comprising:

identifying requests in a web page source document;

for each request:

determining if a content item request has been generated; and

if a content item request has not been generated, generating a content item request for all requests in the web page source document.

2. The method of claim 1, comprising:

receiving content items in response to the content item request; and

storing the received content items.

3. The method of claim 2, comprising:

defining content item environments in the web page:

retrieving a stored content item responsive to the request corresponding to the content environment; and

rendering the retrieved content item in the content item environment.

4. The method of claim 1, wherein:

the content item environments comprise iframes; and

the content item comprise advertisements.

5. The method of claim 1, comprising:

defining content environments in a head section of a web page source document.

6. The method of claim 1, wherein:

determining if a content item request has been generated comprises:

determining if received content items are stored in a data store.

7. The method of claim 1, wherein:

determining if a content item request has been generated comprises:

determining if content item request has been transmitted to a content item server.

8. A system, comprising:

a data store storing instructions executable by a processor, the instructions including:

first instructions configured to define content item environments in a page environment; and

second instructions associated with each content item environment and configured to determine whether a content item request has been generated by any of the second instructions, and in response to determining that a content item, request has not been generated by any of the second instructions generate a content item request for content items for each of the content item environments.

9. The system of claim 8, wherein:

the first and second instructions are stored in a source document.

10. The system of claim 9, wherein:

the first and second instructions comprise interpreted instructions.

11. The system of claim 9, wherein:

the first and second instructions comprise scripts.

12. The system of claim 9, wherein:

the source document comprises a hypertext markup language document.

13. The system of claim 9, wherein:

the first instructions are located in a head section, and the second instructions are located in a body section.

14. The system of claim 8, wherein:

the content item environments comprise divs.

15. The system of claim 14, wherein:

the content items comprise advertisements.

16. The system of claim 14, wherein:

The content item request for content items for each of the content item environments comprises a combined advertisement request.

17. The system of claim 9, wherein:

the first instructions and the second instructions are stored so that the first instructions are executed before the second instructions.

18. A system, comprising:

a data store storing web page source files, the web page source files including:

declaration instructions configured to define advertisement slots; and

rendering instructions associated with the advertisement slots and configured to determine whether an advertisement request has been generated, and in response to determining that an advertisement request has not been generated, transmit and advertisement request for each of the advertisement slots.

- 19.** The system of claim **18m** wherein:
the declaration instructions comprise declaration snippets corresponding to each advertisement slot; and
the rendering instructions comprise rendering snippets corresponding to each advertisement slot.
- 20.** The system of claim **19**, wherein:
the declaration snippets and the rendering snippets are javascript compatible.
- 21.** The system of claim **19**, wherein:
the declaration snippets are stored in a head section of the web page source files.
- 22.** The system of claim **19**, wherein:
the data store is further configured to store advertisement data received in response to the transmitted advertisement request for each of the advertisement slots.
- 23.** The system of claim **22**, wherein:
each rendering snippet comprises further instructions configured to retrieve received advertisement data stored in the data store, the received advertisement data corresponding to an advertisement slot with which the rendering snippet is associated.
- 24.** A system, comprising:
a data store storing web pages source files, the web page source files including:
 declaration instructions configured to define content item environments;
 fetching instructions configured to generate content item requests for each of the content item environments;
 rendering instructions associated with the content item environments and configured to generate local content item calls to retrieve content items received in response to the content item requests and render the retrieved content items in corresponding content item environments.
- 25.** The system of claim **24**, wherein:
the content items comprise advertisements.
- 26.** The system of claim **25**, wherein:
the content item environments comprise iframes.
- 27.** The system of claim **25**, wherein:
the declaring instructions and the fetching instructions are stored in a head section of the web page source files; and
the rendering instructions are stored in a body section of the web page source files.

- 28.** The system of claim **25**, wherein:
each content environment has associated fetching instructions and rendering instructions, and wherein the fetching instructions are configured to determine whether a content item request has been generated by any of other fetching instructions, and in response to determining that a content item request has not been generated by any of the other fetching instructions, generate content item requests for each of the content item environments.
- 29.** A method, comprising:
declaring content item requests for a web page;
generating a combined content item request for all declared content item requests;
storing content item requests receive in response to the combined content item request; and
generating a local call to retrieve at least one of the stored content items.
- 30.** The method of claim **29**, comprising:
generating a plurality of content item requests;
assigning an identical pageview identifier to each content item request; and combining the plurality of content item requests into the combined content item request.
- 31.** The method of claim **30**, wherein:
the content items comprise advertisements.
- 32.** A system, comprising:
means for declaring content item environments;
 means for determining whether content items have been fetched for all content item environments, and for fetching content items for each of the content item environments in response to determining that the content items have been not been fetched for all content item environments; and
means for rendering received content items in each of the content item environment.
- 33.** A method, comprising:
identifying requests in a web page source document;
for a first identified request, generating a content item request for all identified requests;
storing content items received in response to the content item request; and
for subsequent identified requests, generating local content item requests to retrieve the stored content items.
- 34.** The method of claim **33**, wherein:
the content item requests comprise advertisement requests; and
the content items comprise advertisements.

* * * * *